

Lake Hammonasset

Regional Water Authority Permit Required

A Regional Water Authority (RWA) Recreation Area, Lake Hammonasset was opened in 1990. This area offers ten miles of trails around the reservoir. The shortest route around the lake that includes both peninsulas and takes advantage of the short cuts is 7.4 miles, so allow several hours. There are several short trails that branch off from the Hammonasset Trail or the Indian Cave Trail that provide shortcuts or nice lookout points.

The Hemlock Trail offers scenic views of the Lake Hammonasset shoreline and rock formations along a small peninsula. In the spring, you may hear the sound of the waterfall from the dam as you walk this trail. This is the best trail for a short walk and a good place for observing waterfowl.

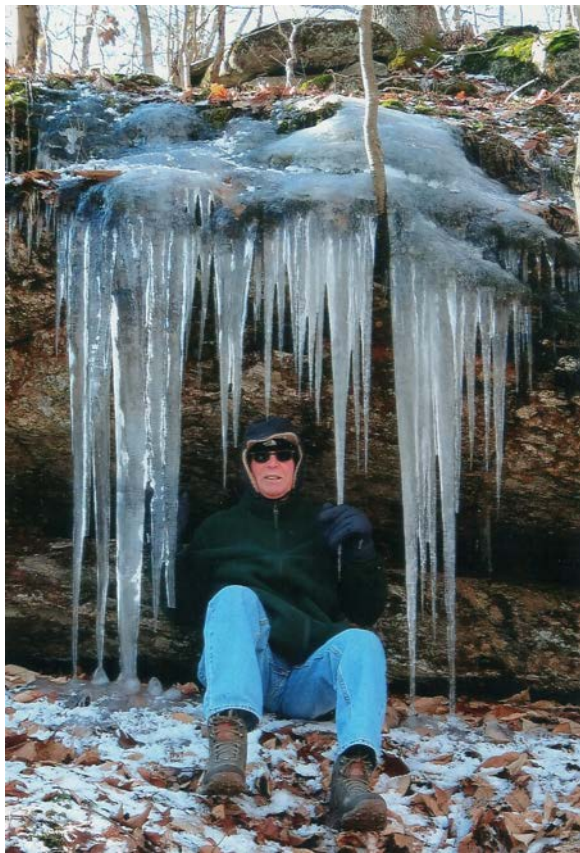


Photo by RWA Photo Contest Winner Mark Levine

Trail Description:

Easy to Moderate Hike

Lake Hammonasset offers a long hike around the Hammonasset Reservoir. There are scenic vistas throughout in addition to a waterfall in the spring time.

Total trails length is approx. 9.57 miles

Directions and Parking:

Lake Hammonasset is right on the Madison and Killingworth Line. From the Route 80 round-about head east towards Killingworth on North Branford Road (Route 80). The entrance will be in about 1 1/2 miles on the left. Lake Hammonasset's access road to the gated entrance and parking area can be reached via Route 80.

Permitted/Prohibited Activities:

This site is for passive use only. No mechanized vehicles. Hiking only. Wading and swimming are prohibited. No fishing at this reservoir. Dogs are not permitted.



Photo by RWA Photo Contest Winner Mark Levine

Total Trails Length: *Approx. 9.57 miles.*

Blue (Oak Trail): 0.16 miles. Easy to Moderate Hike

Red (Lookout Trail): 0.01 miles. Easy Hike

Green (Hemlock Trail): 0.55 miles. Easy to Moderate Hike

White (Hammonasset Trail): 5.93 miles. Easy to Moderate Hike

Orange (Lake View Trail): 0.63 miles. Easy to Moderate Hike

Yellow (Indian Cave Trail): 1.29 miles. Easy to Moderate Hike

White/Yellow Connector: 0.09 miles. Easy Hike



**Claire C. Bennett
Recreation
Program**
Regional Water Authority

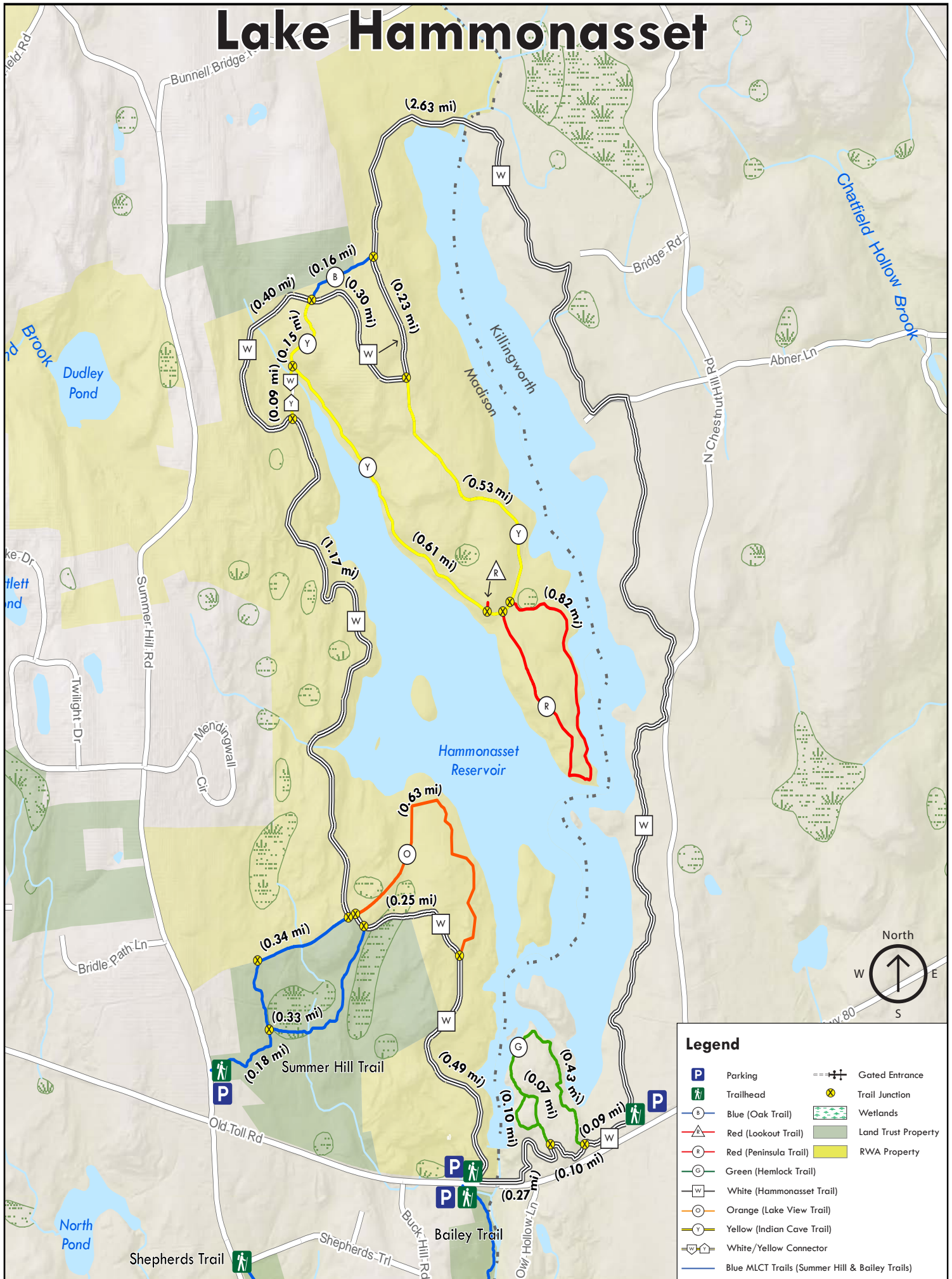
For more information about this location, contact:

Regional Water Authority
Recreation Department
(203) 401-2654

www.rwater.com/recreation



Lake Hammonasset



Legend	
	Parking
	Trailhead
	Blue (Oak Trail)
	Red (Lookout Trail)
	Red (Peninsula Trail)
	Green (Hemlock Trail)
	White (Hammonasset Trail)
	Orange (Lake View Trail)
	Yellow (Indian Cave Trail)
	White/Yellow Connector
	Blue MLCT Trails (Summer Hill & Bailey Trails)
	Gated Entrance
	Trail Junction
	Wetlands
	Land Trust Property
	RWA Property

