

Sometime between 1856 and 1860, the Town of Hamden leased Enos Brooks' farm on Brooksvale Avenue for use as a "poor farm". In 1860 Enos Brooks died and willed the farm to the town with a life lease for his wife Roxana, for the sum of \$100.00 annually. For a period of time between 1860 and 1880 Roxana did not live in the farmhouse. She returned in 1880 and died on the farm shortly thereafter and is buried at the Central Burying Ground.

In 1947, the park officially became known as Brooksvale Park. This name obviously comes from the name of the family that donated the land, Brooks, and a term for a small valley that encompasses the park: a vale. The Park has its own Ranger who lives on site who manages and coordinates all activities and maintenance.

In 2003, the Friends of Brooksvale Park was founded to assist in preserving the park and its trails.

The trail system has many special features. A geologic feature called a drumlin is located near the northern end of the blue trail. A drumlin is a mound created by the piling up of glacial till around a knob of bedrock. There are also glacial erratics in the park. These are large rocks deposited on the landscape by melting glaciers. Erratics are located behind the duck pond at the trailhead of the Violet trail, and on the trail west of the Picnic Pavilion. The "hidden pond" is above the Veteran's Memorial Building on the White Trail and formed by a man-made dam on the Hickory Brook. There are stonewalls along the trails in the park, reminders of the days when Brooksvale Park was active farmland. The Farmington Canal is directly adjacent to the Park.

Directions and Parking:

Brooksvale Park is located just off Whitney Avenue (Route 10) in northern Hamden near the Cheshire town line. Take a left onto Brooksvale Avenue. Follow Brooksvale Avenue about a mile until you see signs for parking on the left.

Permitted/Prohibited Activities:

This land is for passive recreation use only. No motorized vehicles are permitted. Dogs are allowed leashed. Please pick up all animal waste.



Hiking



Pets on Leash

For more information about this location, contact:

Brooksvale Park
Town of Hamden
(203) 287-2669



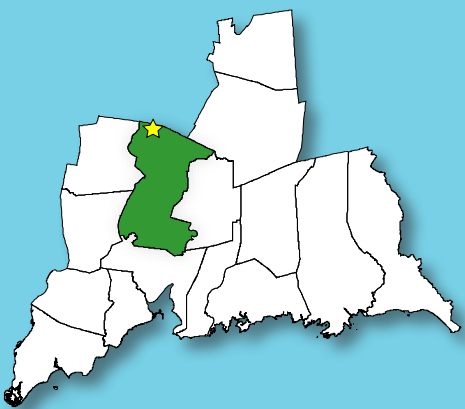
Questions regarding this brochure can be addressed to
South Central Regional Council of Governments
Phone: (203) 234-7555/Fax: (203) 234-9850
E-mail: trails@scrcog.org

Scan QR Code to access the South Central Regional Council of Governments Recreational Trails Webpage



Recreational Trails South Central Connecticut

Brooksvale Park



Hamden, CT



Brooksvale Park



Photo by Carrie Gazda, Hamden Parks & Recreation

Trail Description:

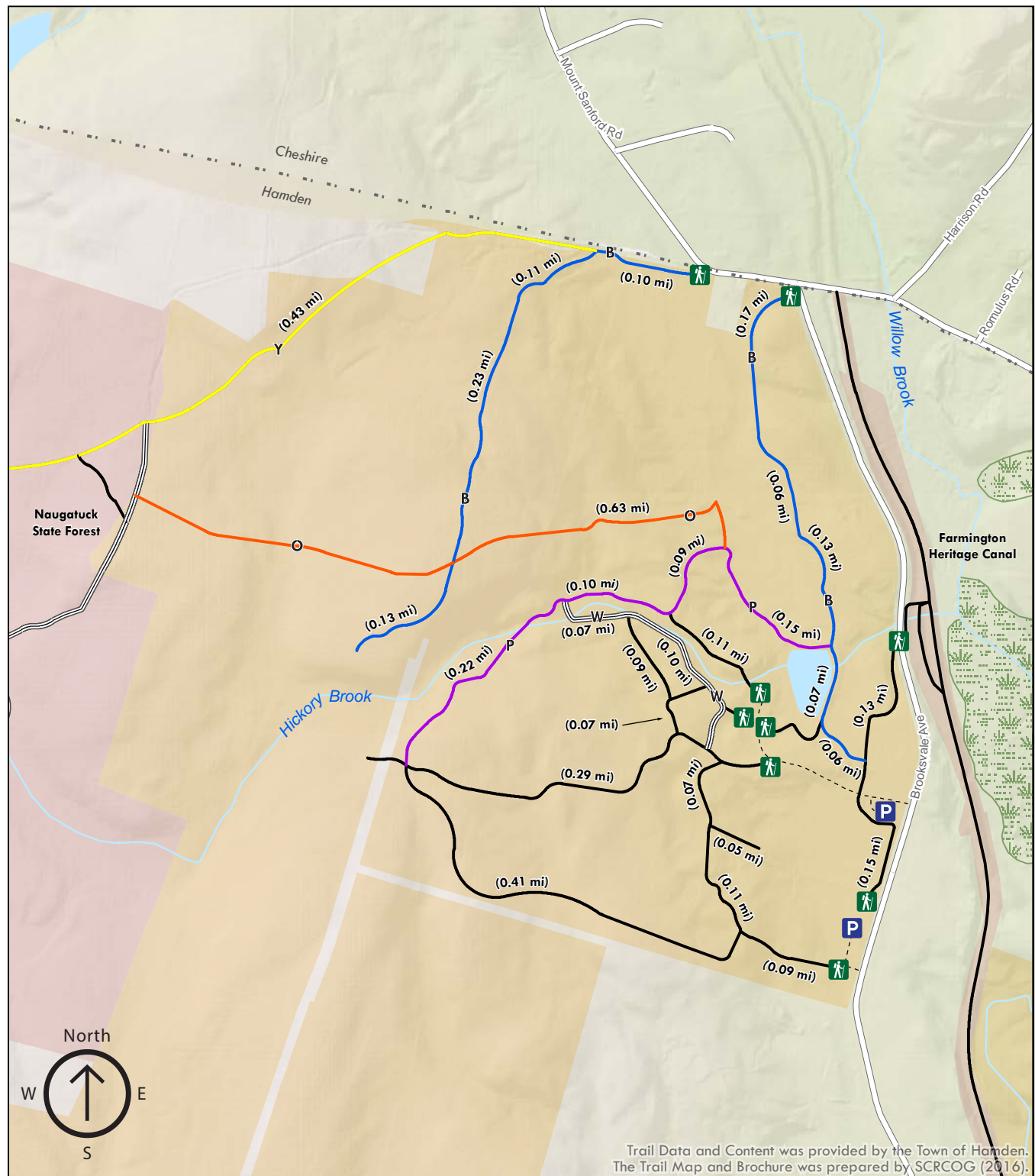
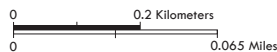
Easy to Moderate Hike

Since 2000, the Town of Hamden and the Department of Parks & Recreation have held the Annual Brooksvale Festival that highlights the beautiful park and the opportunities for both recreation and education in this fabulous outdoor environment. The Festival is held each Autumn. Music, nature crafts, hayrides, and great food are just some of the highlights of the Festival.

Total trails distance is approx. 2.44 miles

Legend

- Parking
- Trailhead
- Parking Access
- Unblazed Trails
- Blue
- Yellow
- Purple
- Orange
- White
- Wetlands
- State Property
- Town Property



Trail Data and Content was provided by the Town of Hamden. The Trail Map and Brochure was prepared by SCRCOG (2016).