

The Pisgah Brook and Saltonstall Mountain Preserves are both parts of a steep traprock ridge that reaches from west to east, straddling the Branford/North Branford border. To the south of this ridge is an equally steep sandstone slope, and deep between these two hills flows Pisgah Brook. Pisgah Brook flows into Queach Brook, which empties into the Branford River. Water from the north slope of Saltonstall Mountain drains into the Farm River, which feeds the Lake Saltonstall Reservoir; thus the preservation of this area helps maintain water quality in two watersheds and helps protect a public water supply.

When the Pisgah Brook property was offered to the Town in 1984 by the South Central Connecticut Regional Water Authority, the Branford Land Trust pushed hard by its acquisition by the Town. Though there were some twists and turns in the road, the project was not a protracted struggle, in part because Town officials realized the extremely steep rocky slopes were unsuitable for development. Since the Town acquisition, the preserve has been enlarged slightly by three adjacent parcels. One was bought by the Town, the other two donated by the Foote Family Charitable Trust.

In 2004, a large abutting property-now the Saltonstall Preserve-was offered to the Town by its private owners. At the tie, the property was the second largest undeveloped in Branford. The Saltonstall Mountain acquisition was truly a team effort, with support from not only the Town but also the South Central Connecticut Regional Water Authority, the Branford Land Trust, the North Branford Land Trust, Friends of the Farm River Estuary, and the Farm River Protective Association.

Immediately to the west of these properties, across Totoket Road, are 9 Miles of trails on the Regional Water Authority land that surrounds Lake Saltonstall. Hikers wishing to explore RWA lands must acquire a permit available at [www.rwater.com](http://www.rwater.com)

### Directions and Parking:

Pisgah Brook can be best accessed via Laurel Hill Road. Follow Brushy Plain Road (Route 740) north. Approximately 1 mile north of I-95 make a right onto Laurel Hill Road. Park at the end of the paved section. To enter the preserve via Saltonstall Mountain, follow Mill Plain Road north to Twin Lakes Road. Go left onto Twin Lakes Road, left onto Summit Drive, right onto Lantern Veiw Drive. Park at end.

### Permitted/Prohibited Activities:

Properties are open during daylight hours plus one hour before and after. Stay on the trails and please carry out everything you carry in. Hunting or the use of BB guns and air rifles is prohibited. No open fires or camping. Motorized vehicles are strictly prohibited and violators will be prosecuted. Follow the classic counsel to leave a place or trail better than you found it.



Hiking



Pets on Leash



Bicycling

### For more information about this location, contact:

Branford Land Trust, Inc.

P.O. Box 254, Branford, CT 06405

(203) 483-5263

[www.branfordlandtrust.org](http://www.branfordlandtrust.org)

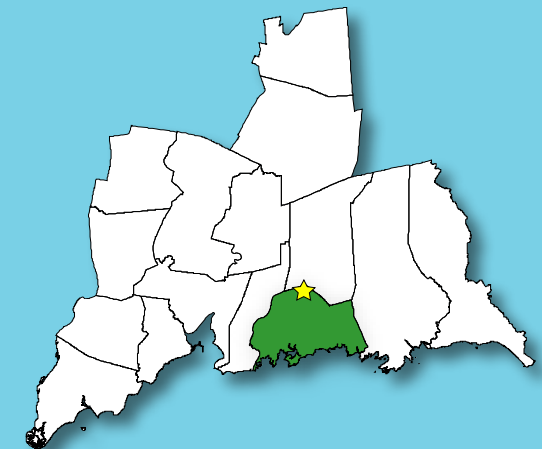
Questions regarding this brochure can be addressed to South Central Regional Council of Governments  
Phone: (203) 234-7555/Fax: (203) 234-9850  
E-mail: [trails@scrcog.org](mailto:trails@scrcog.org)

Scan QR Code to access the South Central Regional Council of Governments Recreational Trails Webpage



## Recreational Trails South Central Connecticut

# Pisgah Brook & Saltonstall Mountain Preserves



**Branford, CT**

# Pisgah Brook & Saltonstall Mountain Preserves



Photo by Branford Land Trust

## Trail Description:

### Easy to Difficult Hike

From Laurel Hill Road, hiking options extend along Pisgah Brook in both directions or up a steep path to the expansive trail system along the ridgeline, offering a perspective from some of the highest points in Branford.

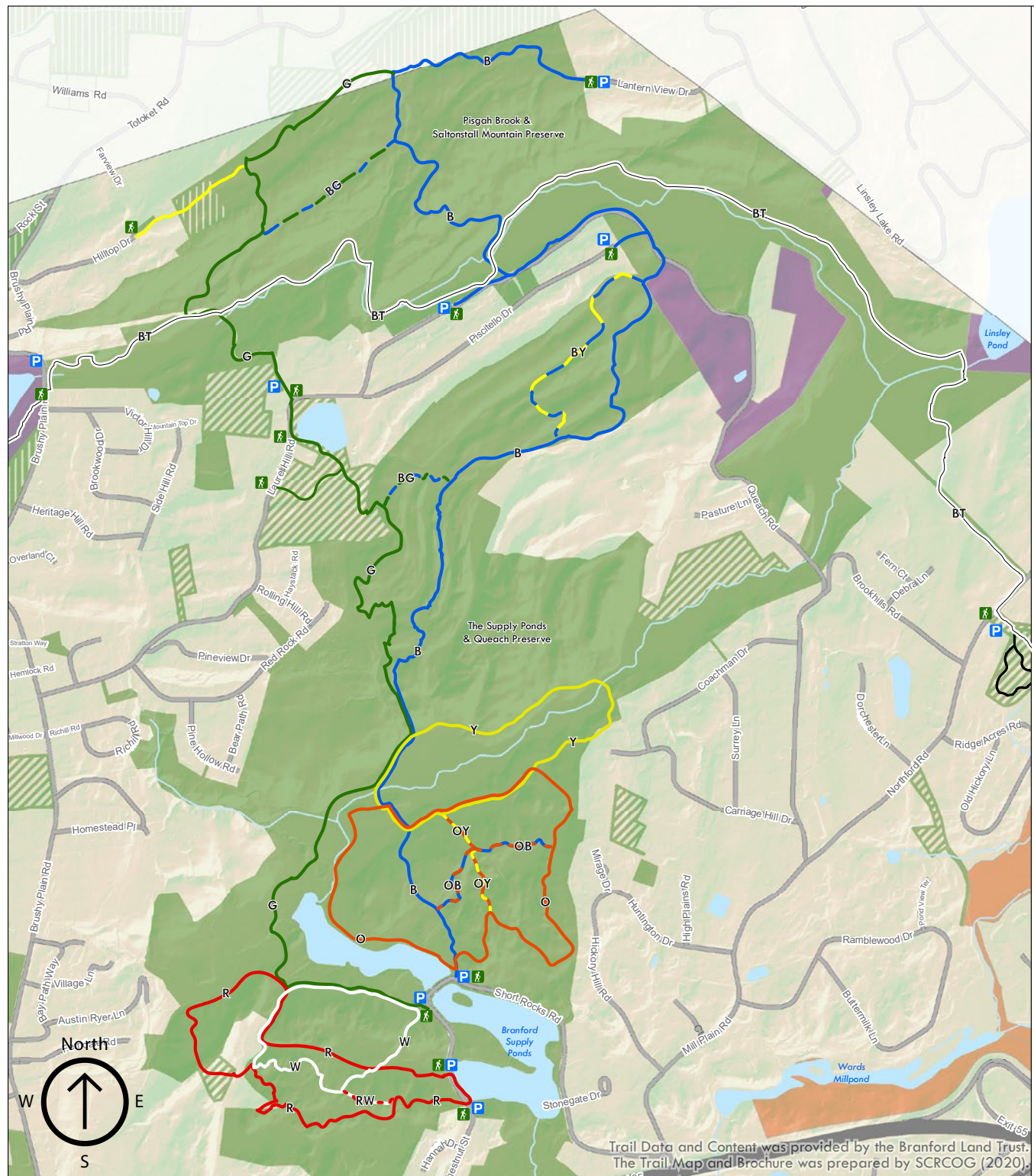
**NO Motorized Vehicles Allowed  
On Town or Land Trust Properties**

**Report All Violations To Branford Police  
(203) 481-4241**

## Legend

**HELP US PROTECT THE NATURAL BEAUTY OF THE PRESERVE  
PLEASE WALK OR RIDE ONLY ON BLAZED TRAILS**

- |                                |  |                                  |
|--------------------------------|--|----------------------------------|
| Trailhead                      | Parking  | The Trail Mileage is approximate |
| Green Trail - 3.18 mi          | Blue Trail - 3.54 mi                                 |                                  |
| Yellow Loop - 1.19 mi          | Orange Loop - 1.7 mi                                 |                                  |
| White Loop 1.0 mi              | Red Loop - 1.7 mi                                    |                                  |
| Red/White Connector - 0.11 mi  | Branford Trail - 3.1 mi (Mill Plain to Brushy Plain) |                                  |
| Blue/Yellow Connector - 0.5 mi | Orange/Blue Connector - 0.34 mi                      |                                  |
| Blue/Green Connector - 0.32 mi | Orange/Yellow Connector - 0.23 mi                    |                                  |
| Town Property                  | Land Trust Property                                  | Regional Water Authority         |
| Private                        | Federal/State  |                                  |



Trail Data and Content was provided by the Branford Land Trust. The Trail Map and Brochure was prepared by SCRCOG (2020).