

# Manage Space

- Increase your following distance
- Avoid driving late at night
- Always use turn signals



- Choose routes that are familiar, well-lit, and lightly traveled, if possible



- Watch for pedestrians, motorcyclists, and cyclists who may not see you
- Use high beams when no one is in front of the vehicle and low beams during the day

# Medication



Did you know that if you're in a crash while impaired by medication, you can be charged with DUI?

As we age, it is likely that we will face health conditions that require more than one medication.



Mixing any medicines — prescription, OTC, herbal supplements, or medical and recreational cannabis — can directly affect your ability to operate a vehicle.

Talk with your doctor or pharmacist about the effect of consuming alcohol or cannabis while taking medication and the effect it may have on your ability to drive.



## Refresh Your Driving Skills

Connecticut drivers could earn a 5% discount on their auto insurance for 2 years after taking the AARP Smart Driver™ course.\*

To learn more about other offerings from AARP Driver Safety, visit [aarp.org/drive](http://aarp.org/drive).

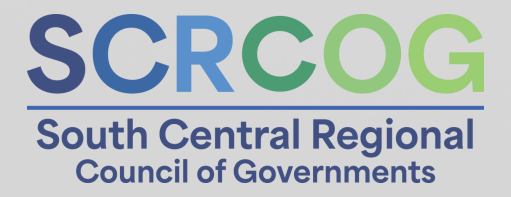
\*Other restrictions may apply. Consult your agent for details.



## Older, Wiser, and Now a Better Driver

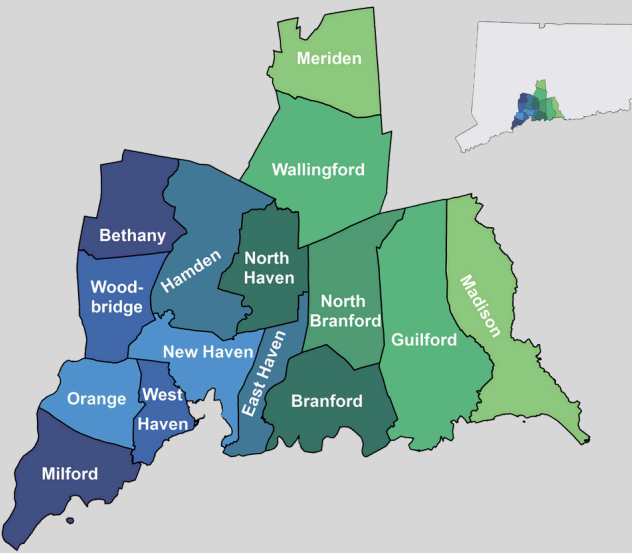


This course is being offered for free courtesy of SCRCOG and CT DOT.



# Who We Are

SCRCOG, the South Central Regional Council of Governments, provides a platform for intermunicipal coordination, cooperation, and decision making.



## Fifteen Member Municipalities

- Bethany
- Woodbridge
- Hamden
- New Haven
- Orange
- West Haven
- Milford
- Meriden
- Wallingford
- North Haven
- North Branford
- East Haven
- Branford
- Guilford
- Madison

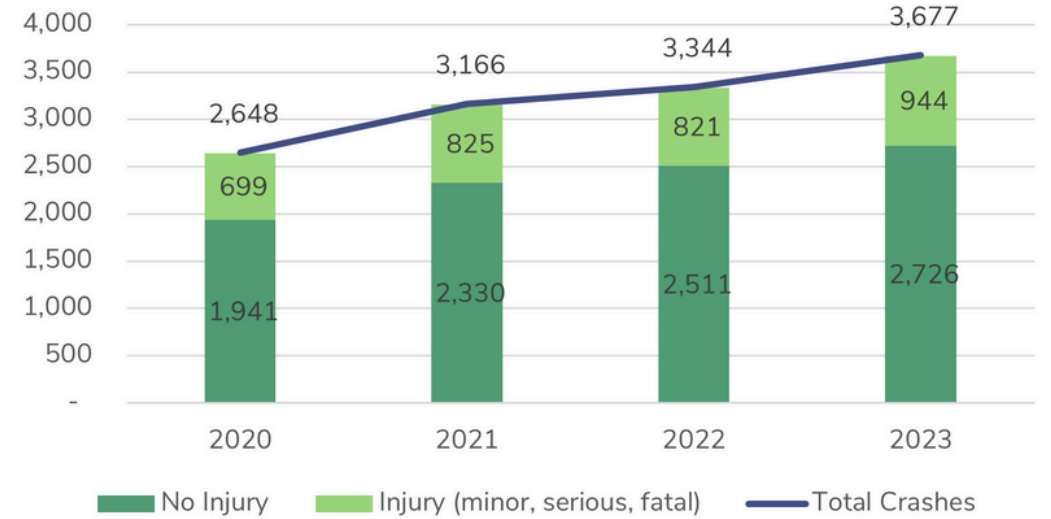
# Senior Driving Safety

Over the last 4 years, the number of crashes in the region involving senior drivers increased nearly 39%.

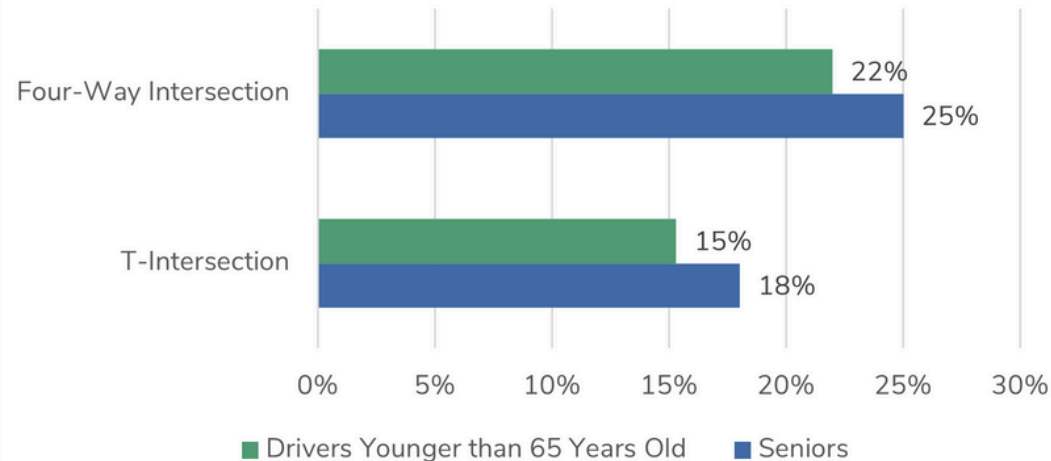
Working with our partners, SCRCOG would like to offer our senior drivers some tips on how to become safer drivers while saving money on their auto insurance premiums.

Source: UConn Crash Data Repository

### SCRCOG Senior Driving Crashes



### Percent of Crashes by Intersection Type (2019-2023)



## Intersection Safety

Seniors should take special caution at intersections, where they are more likely to be involved in a crash than drivers under 65.

Older drivers may be less able to judge the speed of an oncoming vehicle — which is crucial for making left turns.

Source: UConn Crash Data Repository