

Owned by the Woodbridge Park Association, one of the oldest land trusts in Connecticut, the Alice Newton Street Memorial Park is an outdoor enthusiast's dream located in the heart of Woodbridge.

The Park has approximately 100 acres of protected open space. It has four access points and consists of varied habitat classifications such as forests and woodlands, streams, wetlands, etc. Alice Newton Street Memorial Park provides walkers of all ages with easy access to the varied flora and fauna of Woodbridge.

Other major landmarks in the Park include "the meadow" and the nearby Wepawaug Falls. The "Falls" are actually on Woodbridge Land Trust Property, but have become synonymous with this park. The Wepawaug River's northern and eastern branches merge here before it empties into Long Island Sound. Many old stone walls run through much of the Park, adding an element of this land's past agricultural history. The meadow must have been quite wet at one time as a proposal was made in 1948 to drain the meadow so that other parts of the Park could be accessed.

The main "blue" trail was originally part of the Naugatuck Trail, one of the oldest Indian trails in Connecticut. This trail is a key component to Woodbridge's State Designated Greenway System. Hikers can enjoy about 5 miles of trails consisting of 6 major trails and several additional minor trails. Many of the boardwalks, bridges and benches have been constructed by Boys Scouts, many of whom were earning their Eagle Scout rank.

In January 1929, Mr. Newton Street donated 82 acres of forest north of the Woodbridge Town Hall as a memorial to his mother, Alice Newton-Street (1853-1928). The Park was created and named in her honor. Mr. Newton had drawn inspiration from the New Haven Green, Boston Common and Hyde Park in London and recognized the importance of open spaces. He wanted to preserve the rural character of the land as he had grown up to know it. Further, he wanted an association made up of people who cared enough about the Park to protect it, so that it would be there in perpetuity for all to use. The Woodbridge Park Association was incorporated, and over the years additional contiguous land donations have been made. Although maintaining the Park requires many man-hours of effort, the WPA is committed to preserve it as a very special haven for wildlife and hikers alike.

Directions and Parking:

Take Rt 114 to the Woodbridge Town Center. Parking is available on Meetinghouse Lane or any other public parking areas. The main entrance for Alice Newton Street Memorial Park is located on Meetinghouse Lane just west of the rear driveway of the First Church of Christ. A large and prominent sign, detailing many of the Park's trails and landmarks is available to view.

Permitted/Prohibited Activities:

This Park is for passive recreation only. Hiking and nature study. Pets are welcome but must be on a leash. No motorized vehicles or horses. Please pick up and bag all pet waste. ALL are welcome in the Park for passive recreation during daylight hours year-round.



Picnic Area



Hiking



Pets on Leash

For more information about this location, contact:

The Woodbridge Park Association, Inc
president@woodbridgeparks.org
www.woodbridgeparks.org

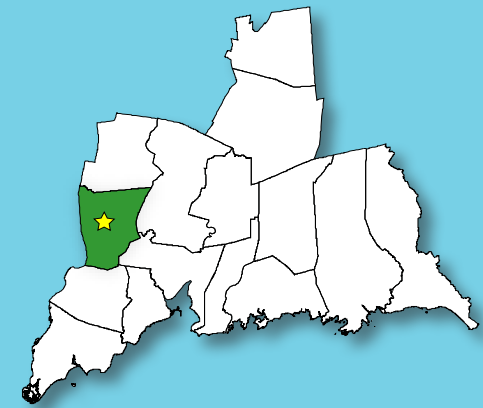
Questions regarding this brochure can be addressed to
South Central Regional Council of Governments
Phone: (203) 234-7555/Fax: (203) 234-9850
E-mail: trails@scrcog.org

Scan QR Code to access the South Central Regional Council of Governments Recreational Trails Webpage



Recreational Trails South Central Connecticut

Alice Newton Street Memorial Park Trails



Woodbridge, CT



Alice Newton Street Memorial Park Trails

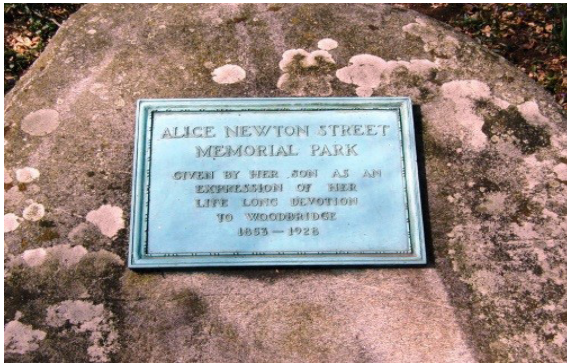


Photo by the Woodbridge Park Association

Trail Description:

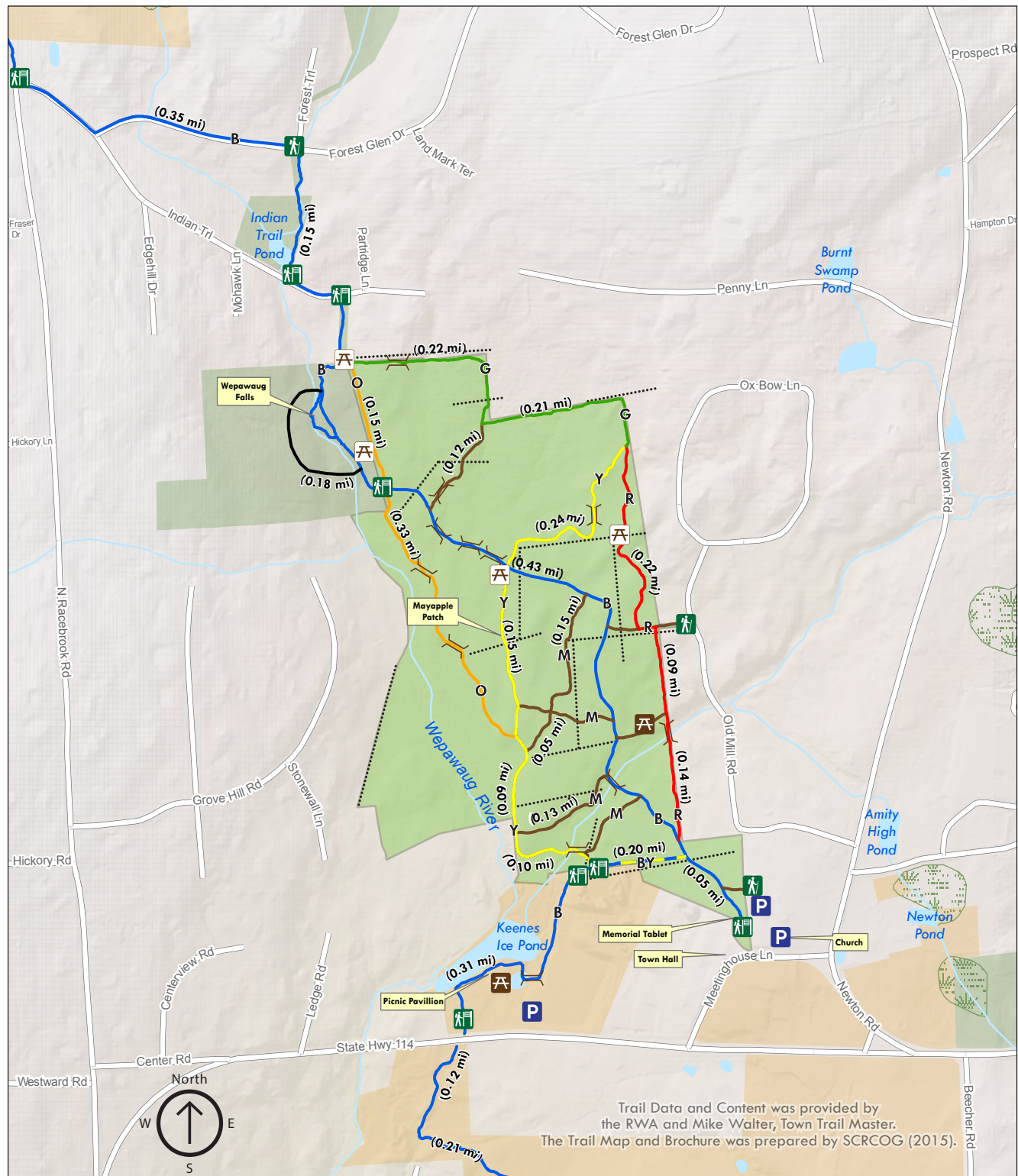
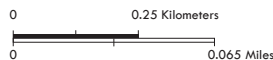
Easy Walk to Moderate Hike

The Blue Trail is a remnant of the Old Naugatuck Trail. Dirt trail and gravel areas are prominent. Most, if not all, the trails have some land bridges or boardwalk crossings.

Total trails distance is approx. 4.5 miles

Legend

	Parking		Bench
	Trailhead/Sign		Picnic Area
	Trailhead		Bridge
	Minor Trail		Woodbridge Park Association Property
	Other Trail		Land Trust Property
	Stone Wall		Town Property
	Blue with Yellow		
	Blue (Naugatuck Trail)		
	Green (North Boundary Trail)		
	Orange (West Boundary Trail)		
	Red (East Boundary Trail)		
	Yellow (Meadow Trail)		
	Wetlands		



Trail Data and Content was provided by the RWA and Mike Walter, Town Trail Master. The Trail Map and Brochure was prepared by SCRCOG (2015).