

The Beaver Brook marsh walking trail is on private property with a public access easement. It loops along the edge of a 41 acre fresh water marsh and the Beaver Brook canal. A boardwalk that was destroyed in a 2012 fire is being planned for replacement in 2016 or 2017. Off-street parking and walking trail enhancements will provide access to the new boardwalk for people of all abilities when the project is completed.

Waterfowl and other wildlife can be viewed in the marsh and nearby forested areas. Ospreys have nested nearby and are seen here. Turtles, green frogs, and northern water snakes can be seen along the edge of the marsh and sunning themselves on marsh logs.

Butterflies, dragonflies, and damselflies can be seen along the trail between the marsh and the Beaver Brook canal.

This protected marsh habitat is bordered by Metro North Railroad and nearby I-95. Walking along this conservation area is a reminder that these ecological areas are important habitats for wildlife, buffers for people, and water quality.

Managing the Phragmites Common Reed and other invasive plants are being planned during the boardwalk restoration project. The Phragmites are an example of a non-native invasive plant that degrades the ecosystem habitat and creates a fire hazard.

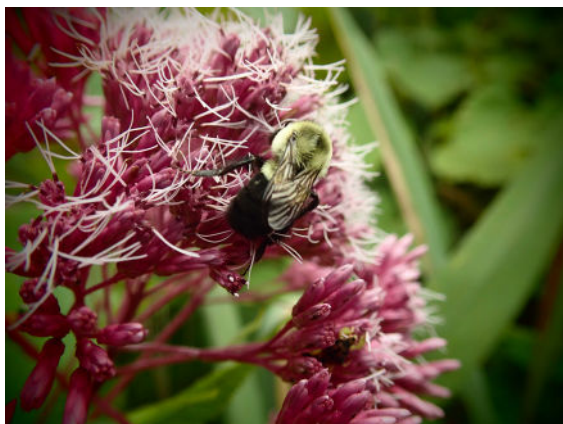


Photo by Steve Johnson, City of Milford

### Directions and Parking:

Off street parking is available for 16 cars at 553 West Avenue. This is approximately 0.2 miles from U.S. Route 1, Boston Post Road.

### Permitted/Prohibited Activities:

Trails are open ½ hour before sunrise and ½ hour after sunset or as posted. Stay on the trails. Dogs must be leashed at all times. No motorized vehicles are allowed and alcoholic beverages are prohibited.



Hiking



Pets on  
Leash



Wildlife  
Viewing



### For more information about this location, contact:

City of Milford

Open Space and Natural Resources Office

(203) 878-7812 or

(203) 783-3201

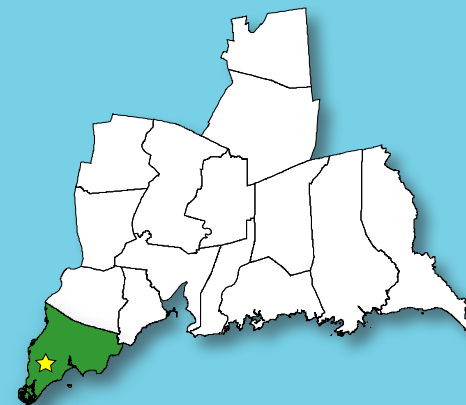
Questions regarding this brochure can be addressed to  
South Central Regional Council of Governments  
Phone: (203) 234-7555/Fax: (203) 234-9850  
E-mail: [trails@scrcog.org](mailto:trails@scrcog.org)

Scan QR Code to access the South Central Regional Council of  
Governments Recreational Trails Webpage



## Recreational Trails South Central Connecticut

# Beaver Brook



Milford, CT



# Beaver Brook



Photo by Steve Johnson, City of Milford

## Trail Description:

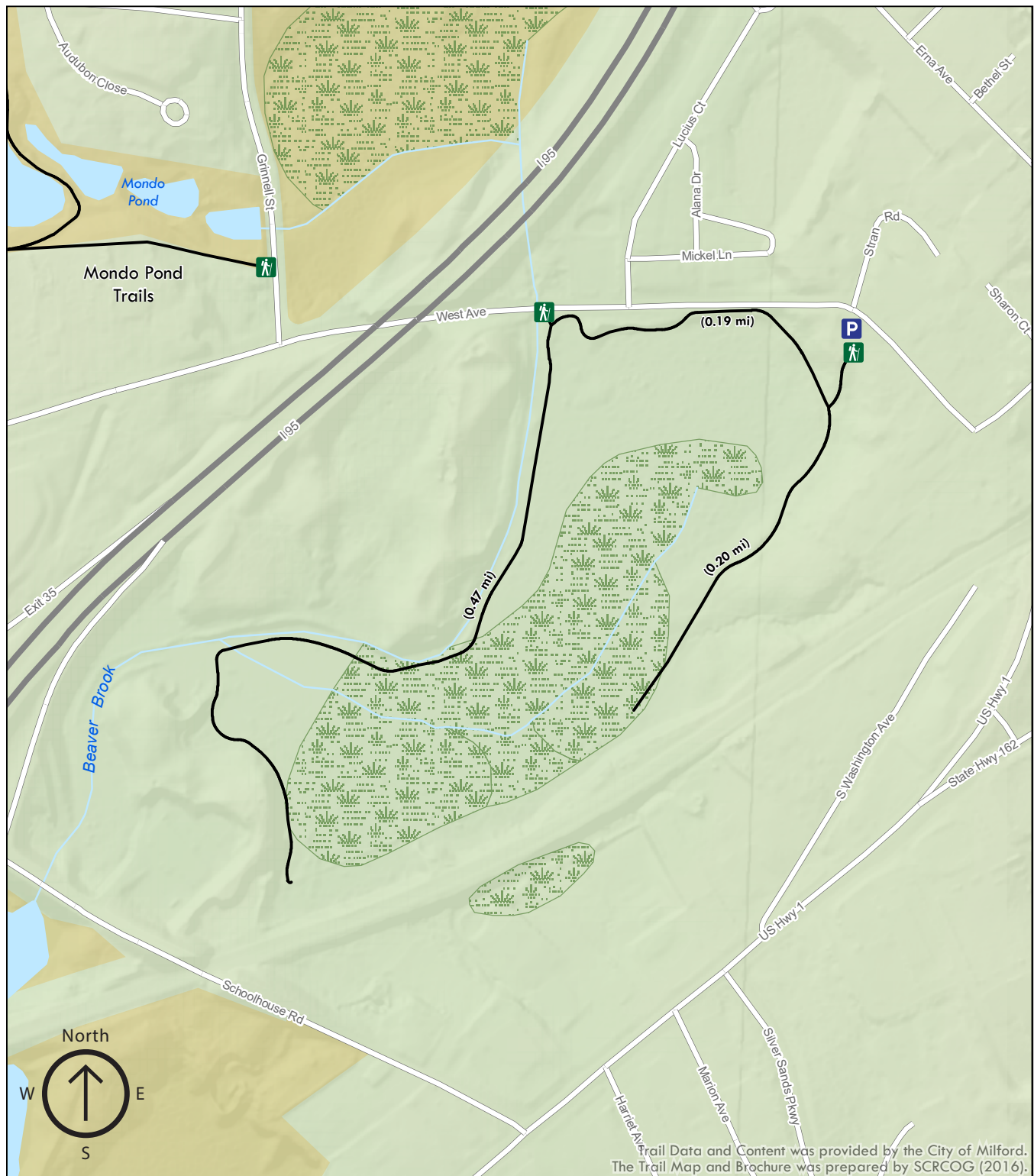
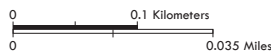
### Easy Hike

This walk travels through a relatively flat area on gravel trails around a wetland area. Currently there is no boardwalk to connect the existing trail loop, however there are plans for a new boardwalk in the coming years.

Total trails distance is approx. 0.89 miles

## Legend

-  Parking
-  Trailhead
-  Beaver Brook Trails
-  Town Property



Trail Data and Content was provided by the City of Milford. The Trail Map and Brochure was prepared by SCRCOG (2016).