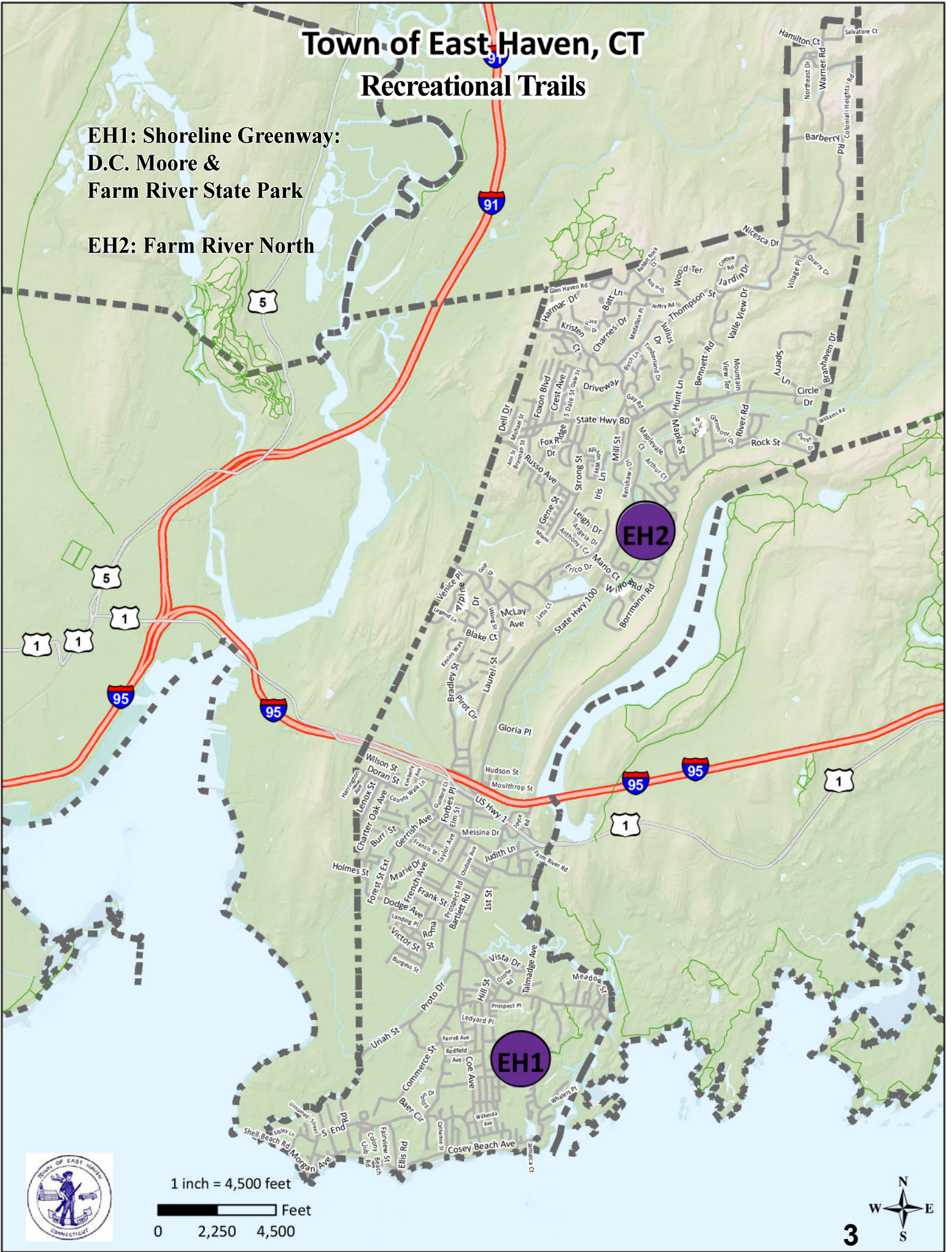


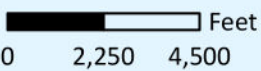
# Town of East Haven, CT Recreational Trails

**EH1: Shoreline Greenway:  
D.C. Moore &  
Farm River State Park**

**EH2: Farm River North**



1 inch = 4,500 feet



# Shoreline Greenway Trail: D.C. Moore & Farm River State Park

The Shoreline Greenway Trail is a 25-mile cycling and pedestrian trail being developed through five towns from Lighthouse Point in New Haven to Hammonasset Beach State Park in Madison. This trail is being pieced together by an all-volunteer organization without an existing right-of-way such as an abandoned rail line. Nearly 6 miles are complete and usable in East Haven, Branford, Madison and soon in Guilford. New sections are added as funding and landowner approvals are obtained.

The trail in East Haven is approximately one mile. The best place to start is at the D.C. Moore School. From the school access pathway, bear right and hike southwest on a walking trail through picturesque woods to a panoramic view of tidal wetlands at the Bradford Preserve. See several species of butterflies, and land-based and shorebirds. Backtrack and turn right at a rock formation on the main granite-topped trail through the woods. Observe glacial outcroppings, mountain laurel, hickory and tulip trees. Follow the main trail toward the East Haven Trailhead parking area. From the parking area, cross Mansfield Grove Road, and head east on Pevetty Drive, where the walking trail in Farm River State Park begins. In the park you can see nesting ospreys, caves and spectacular water views. The trail terminus is at Short Beach Road/Route 142. East Haven Boy Scout Troop 401 cleared the one mile of trail from D.C. Moore School through the park.



Photo Provided by Shoreline Greenway Trail

## Trail Description:

### Easy Walking and Hiking

Generally easy and as accessible as the terrain allows, with some small hills. D.C. Moore section is paved and handicapped accessible while Farm River State Park section is for hiking.

Total trails distance is approx. 1.16 miles

## Directions and Parking:

From I-95 Exit 51, take Frontage Road/Saltonstall Avenue Turn right on Hemingway Avenue, left on Route 142 and right on Mansfield Grove Road to stop sign. Turn right to Hoop Pole Lane to second parking lot on left, D.C. Moore School, Elliot Street parking lot. Access the trail from open field adjacent to parking lot.

## Permitted/Prohibited Activities:

Trail use and parking are free. Walkers, cyclists, skiers, wheelchairs, baby carriages and leashed dogs are welcome. No motorized vehicles. Bikers yield to pedestrians. Owners must clean up after dogs. Walkways will not support horses. Carry in, carry out!



Photo Provided by Shoreline Greenway Trail

**Total Trails Length:** *Approx. 1.16 miles*

**Shoreline Greenway Trail:** 1.02 miles. Easy Walk

**Shoreline Greenway Spur:** 0.12 miles. Easy Walk



Shoreline Greenway Future Extent



## For more information about this location, contact:

Shoreline Greenway Trail, Inc.

P.O. Box 148

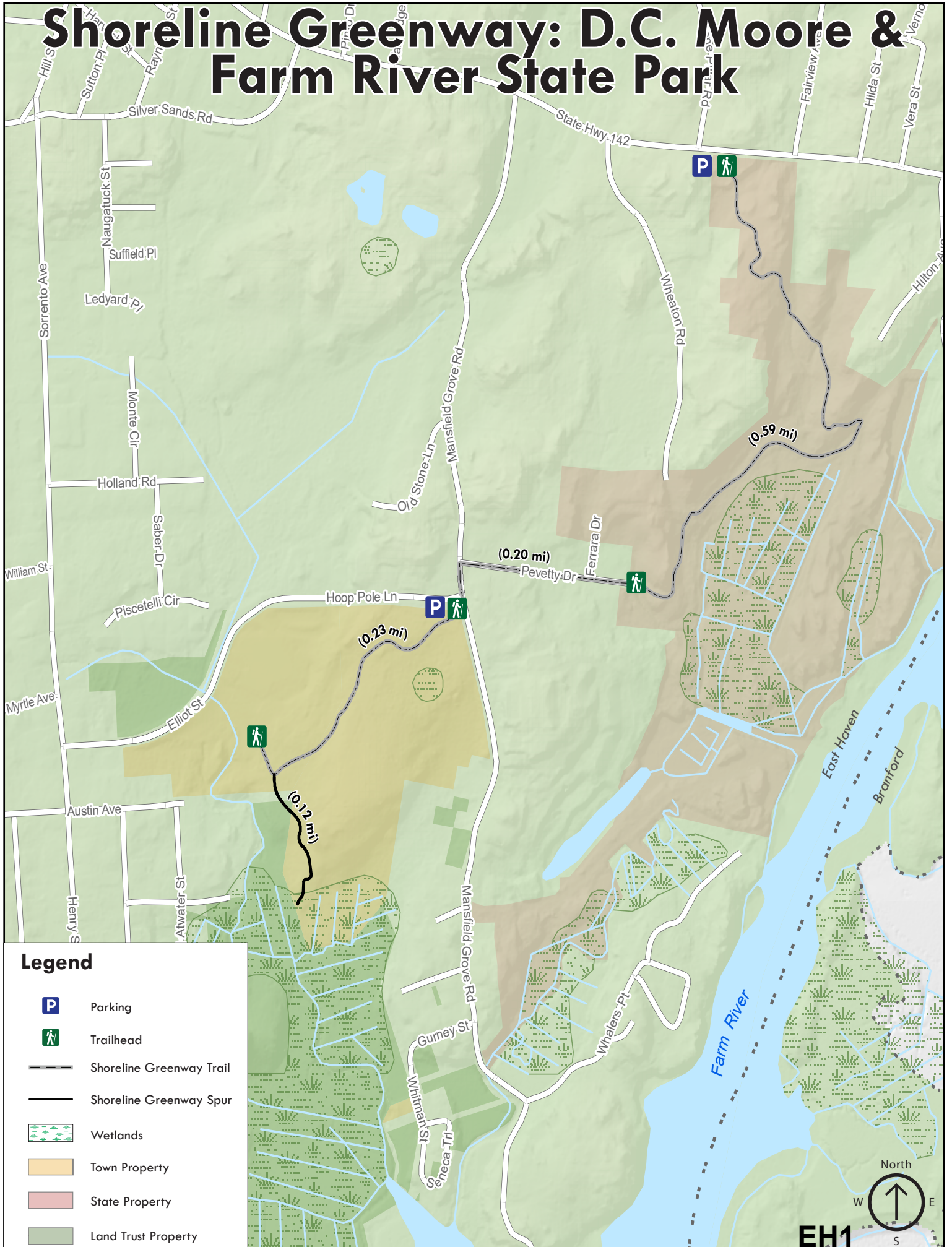
Branford, CT 06405

[easthaven@shorelinegreenwaytrail.org](mailto:easthaven@shorelinegreenwaytrail.org)

[www.shorelinegreenwaytrail.org](http://www.shorelinegreenwaytrail.org)



# Shoreline Greenway: D.C. Moore & Farm River State Park



## Legend

-  Parking
-  Trailhead
-  Shoreline Greenway Trail
-  Shoreline Greenway Spur
-  Wetlands
-  Town Property
-  State Property
-  Land Trust Property



# Farm River North

The scenic Farm River North Trail in East Haven winds along the west bank of the river from between Corbin Road and Willow Road. The terrain is fairly level, but challenging for the entry level hiker and their family. The trail winds through mature trees and various species of underbrush. There are three trail sections so you can select the amount of hiking you are ready for, from one-tenth of a mile to half a mile.

You may wish to follow the whole eight-tenths of a mile route and back again. The segments are between Willow Road and Hellstrom Road (0.2 miles), between the south and north bend of Hellstrom Road (0.5 miles), and between the north bend of Hellstrom Road and Corbin Road (0.1 miles). These trails are closed during and after rainfalls to allow the Farm River to subside. As this is a natural surface trail, be prepared for muddy conditions in the spring. Crossing of drainage swales can prove slippery at times and extra caution must be taken.

The trail is open from 8 a.m. until one hour before sunset. This scenic property in East Haven lies to the west of the Regional Water Authority's Lake Saltonstall property.



*Photo by the Town of East Haven*

## Trail Description:

### Moderate hike

The Farm River North trail has three sections and runs parallel to the Farm River. The trail is fairly even but families with young children may have a challenge.

*Total trail distance is approx. 0.72 miles*

## Directions and Parking:

The Farm River Trail can be accessed via North High Street (Route 100). The Farm River Trail has on-street parking available at the start of each of the trail sections on Willow Road, Hellstrom Road at the two places it crosses the trail, and at Corbin Road.

## Permitted/Prohibited Activities:

We ask that you respect our neighbors and do not stray from the trail into their back yards. Be extra careful crossing the street between each section. Motorized vehicles and equipment are prohibited, except for maintenance purposes. Dogs are permitted on leash, however, there are several dogs in the area that may take offense.



*Photo by the Town of East Haven*

**Total Trails Length:** *Approx. 0.72 miles*

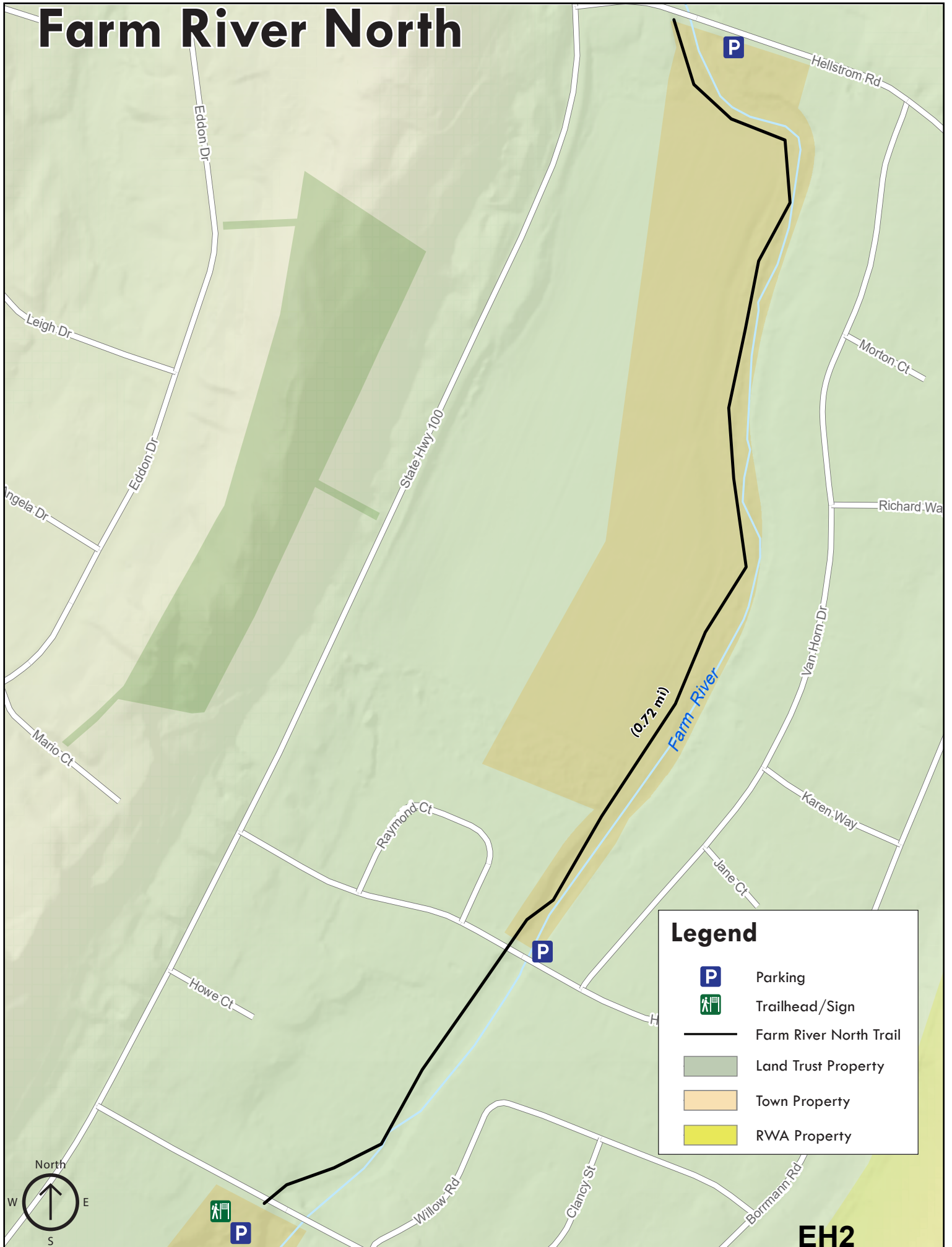


## For more information about this location, contact:

Town of East Haven  
Department of Public Works  
(203) 468-3250



# Farm River North



**Legend**

- Parking
- Trailhead/Sign
- Farm River North Trail
- Land Trust Property
- Town Property
- RWA Property

**EH2**