

An extensive network of trails meander along recreational areas, a community garden, lawns, fields, shrublands, the Wepawaug River, wetlands, vernal pools, and forested areas. The trails connect nearly every portion of the 200 acre Eisenhower Park.

Eisenhower Park is the home of many community events during the year.

The Wepawaug River flows the entire length of Eisenhower Park. Part of the river is diverted to a pond and forms a small island connected by bridges. The park's extensive wetlands provide many vital environmental benefits. In 2007, over two acres of wetland floodplain and approximately six acres of enhanced surrounding buffer were created in south Eisenhower.

Fields and young forests are common features of the park. In most cases, they are found in abandoned agricultural sites. Occasional stone walls or excavated areas remind visitors of past land uses.

The variety of habitats in Milford's largest park provides a diversity of scenic areas to enjoy and nurtures the park's diverse wildlife. Migrating and nesting birds, butterflies, and other wildlife frequent here.

Community volunteers and scouts have helped enhance the work of the City to make Eisenhower Park a place to enjoy.

Leashed dogs are welcome when outside the fenced dog park area.



American Yellow Warbler - Photo by Brian E. Small

### Directions and Parking:

From I-95, take exit 39B and a right onto Boston Post Road (Route 1). Follow Rt. 1 until the intersection with North Street (Route 121). Take a right at the intersection and the entrance to the park will be on the left in about 1.3 miles. 701 North Street is the main address. Park in the lower lot for access to the many trails.

### Permitted/Prohibited Activities:

Stay on the trails. Dogs must be leashed at all times. No motorized vehicles are allowed and alcoholic beverages are prohibited.



Hiking



Pets on  
Leash



Fishing



Wildlife  
Viewing

### For more information about this location, contact:

City of Milford  
Open Space and Natural Resources Office  
(203) 878-7812 or  
(203) 783-3201

Questions regarding this brochure can be addressed to  
South Central Regional Council of Governments  
Phone: (203) 234-7555/Fax: (203) 234-9850  
E-mail: [trails@scrcog.org](mailto:trails@scrcog.org)

Scan QR Code to access the South Central Regional Council of  
Governments Recreational Trails Webpage



# Recreational Trails South Central Connecticut

## Eisenhower Park



Milford, CT



# Eisenhower Park Trails



Photo by Steve Johnson, City of Milford

## Trail Description:

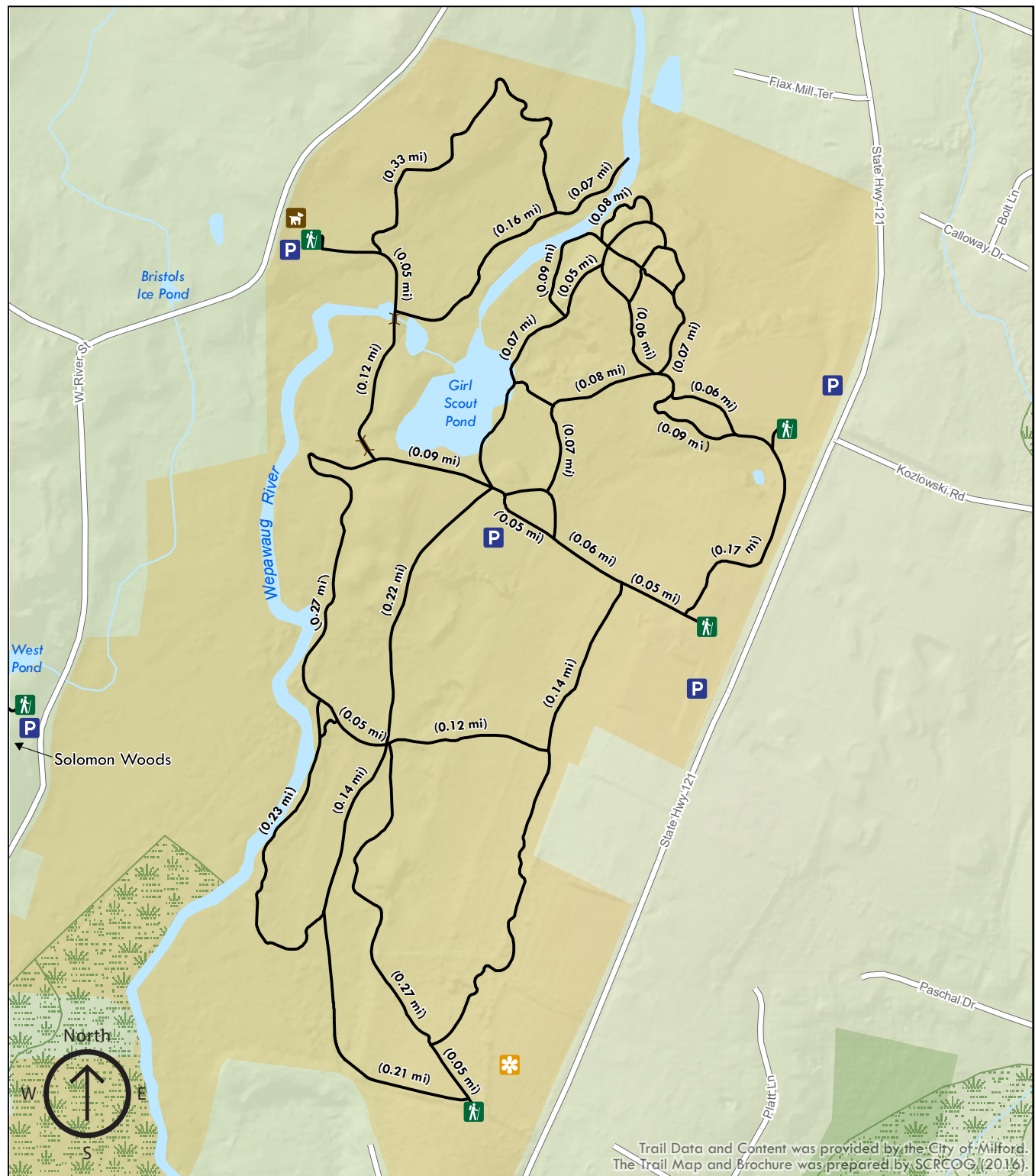
### Easy Hike

The Eisenhower Park trails are a great hike for all ages. The trails wind through the woods and most loop back to themselves.

Total trail distance is approx. 4.58 miles

## Legend

- Parking
- Trailhead
- Dog Park
- Garden
- Bridge
- Eisenhower Park Trails
- Town Property
- Land Trust Property
- Wetlands



Trail Data and Content was provided by the City of Milford. The Trail Map and Brochure was prepared by SCRCOG (2016).