

The scenic Farm River North Trail in East Haven winds along the west bank of the river from between Corbin Road and Willow Road. The terrain is fairly level, but challenging for the entry level hiker and their family. The trail winds through mature trees and various species of underbrush. There are three trail sections so you can select the amount of hiking you are ready for, from one-tenth of a mile to half a mile.

You may wish to follow the whole eight-tenths of a mile route and back again. The segments are between Willow Road and Hellstrom Road (0.2 miles), between the south and north bend of Hellstrom Road (0.5 miles), and between the north bend of Hellstrom Road and Corbin Road (0.1 miles). These trails are closed during and after rainfalls to allow the Farm River to subside. As this is a natural surface trail, be prepared for muddy conditions in the spring. Crossing of drainage swales can prove slippery at times and extra caution must be taken.

The trail is open from 8 a.m. until one hour before sunset. This scenic property in East Haven lies to the west of the Regional Water Authority's Lake Saltonstall property.



Photo by the Town of East Haven

Directions and Parking:

The Farm River Trail can be accessed via North High Street (Route 100). The Farm River Trail has on-street parking available at the start of each of the trail sections on Willow Road, Hellstrom Road at the two places it crosses the trail, and at Corbin Road.

Permitted/Prohibited Activities:

We ask that you respect our neighbors and do not stray from the trail into their back yards. Be extra careful crossing the street between each section. Motorized vehicles and equipment are prohibited, except for maintenance purposes. Dogs are permitted on leash, however, there are several dogs in the area that may take offense.



Hiking



Pets on Leash

For more information about this location, contact:

Town of East Haven
Department of Public Works
(203) 468-3250

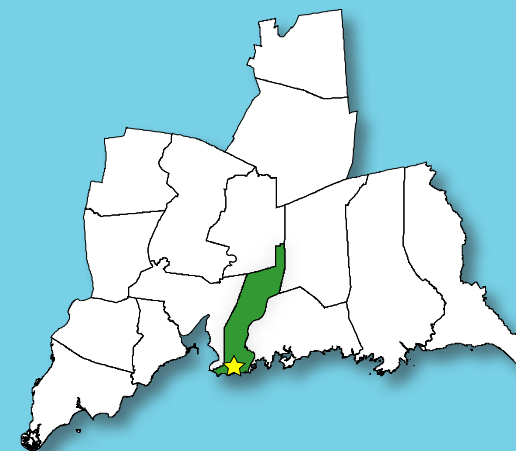
Questions regarding this brochure can be addressed to
South Central Regional Council of Governments
Phone: (203) 234-7555/Fax: (203) 234-9850
E-mail: trails@scrcog.org

Scan QR Code to access the South Central Regional Council of Governments Recreational Trails Webpage



Recreational Trails South Central Connecticut

Farm River North



East Haven, CT

Farm River North



Photo by the Town of East Haven





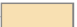

Trail Description:

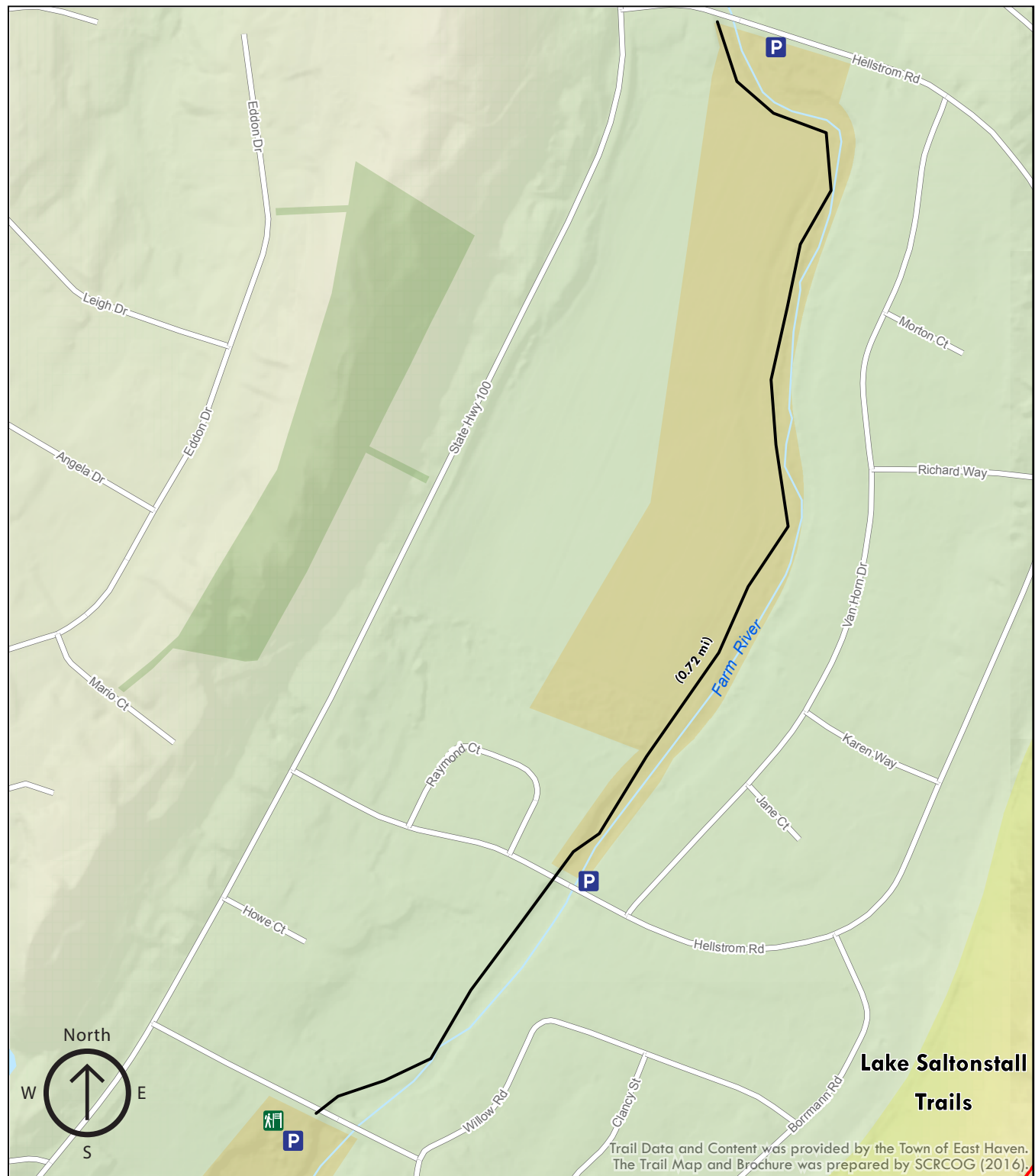
Moderate Hike

The Farm River North trail has three sections and runs parallel to the Farm River. The trail is fairly even but families with young children may have a challenge.

Total trail distance is approx. 0.72 miles

Legend

-  Parking
-  Trailhead/Sign
-  Farm River North Trail
-  Land Trust Property
-  Town Property
-  RWA Property



Trail Data and Content was provided by the Town of East Haven. The Trail Map and Brochure was prepared by SCRCOG (2016).