

# Massaro Community Farm

Massaro Community Farm is a nonprofit, certified organic farm on 57 acres of land deeded to the Town of Woodbridge in 2007 by the Massaro Family, who had farmed the land – originally spanning both Ansonia and Woodbridge on Ford Road - since 1916. According to historical records, the land had primarily served as a dairy operation, with fruit trees, a vegetable garden and chickens to support the family. After the death of the patriarch, John Massaro Sr, on a snowy Christmas eve in 1947, Mary Massaro and two of her three sons remained on the property. They maintained the farm with much support from friends and neighbors across the community, until the death of the last remaining son in 2007. This gave rise to the idea that this property could serve as a community space.

In 2008, a group of Woodbridge residents came together to create the diversified vegetable operation that exists today which produces organic vegetables, strawberries, flowers and honey. The farm now includes  $\pm 10$  acres of land under cultivation, with the remainder serving as open space and riparian zones that support a balanced and diverse ecosystem. It's in this space that a two-loop nature trail was created in partnership with Girls & Boy Scouts. The loop trail encompasses a mixture of native woods as well as wetlands which are great for sighting wildlife and birds, taking a break from the summer heat, or simply observing the change of seasons. The trail also includes several crossings of an unnamed stream that once fed a watering hole for the farm's dairy cows. The watering hole is largely filled in with sediment though the farm hopes to revive it at some future date. Along the trail, you will also find examples of interesting rock formations, the proliferation of native species and remnants of an old rock wall, along with occasional sightings of coyote.

While exploring the farm's nature trail, visitors can also take in several of the original historic structures which have been maintained – the farm's two-story gambrel barn, listed on the State list of historic sites, a 1931 stone barn and the farm house, which dates back to the 1850s. As the farm manager lives in this historic house, trail visitors are asked to respect his privacy.

## Trail Description:

### Easy Hike

The Nature Trail has two loops (pink and blue). The trail guides are generally posted at the farm information map located in the parking area, and the trailhead.

## Directions and Parking:

The address for Massaro Community Farm is 41 Ford Road, Woodbridge, CT 06525.

Trail users should park in the parking area provided between the house and the dairy barn. Overflow parking is available along Ford St, perpendicular to the farm house. Respect farm manager's residential privacy.

## Permitted/Prohibited Activities:

Trail can be used 365 days/year for walking, running, birdwatching, and snow shoeing or cross country skiing.

Bikes are not allowed on the Trail and pet walking is discouraged.

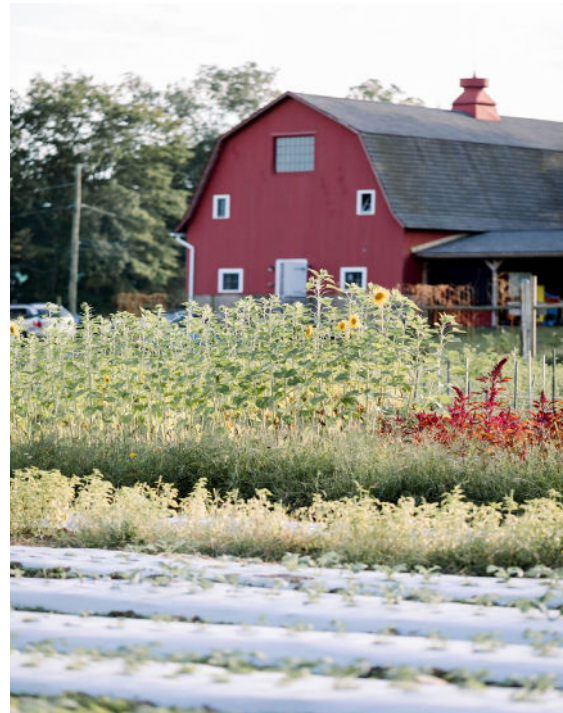
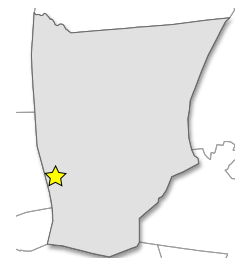


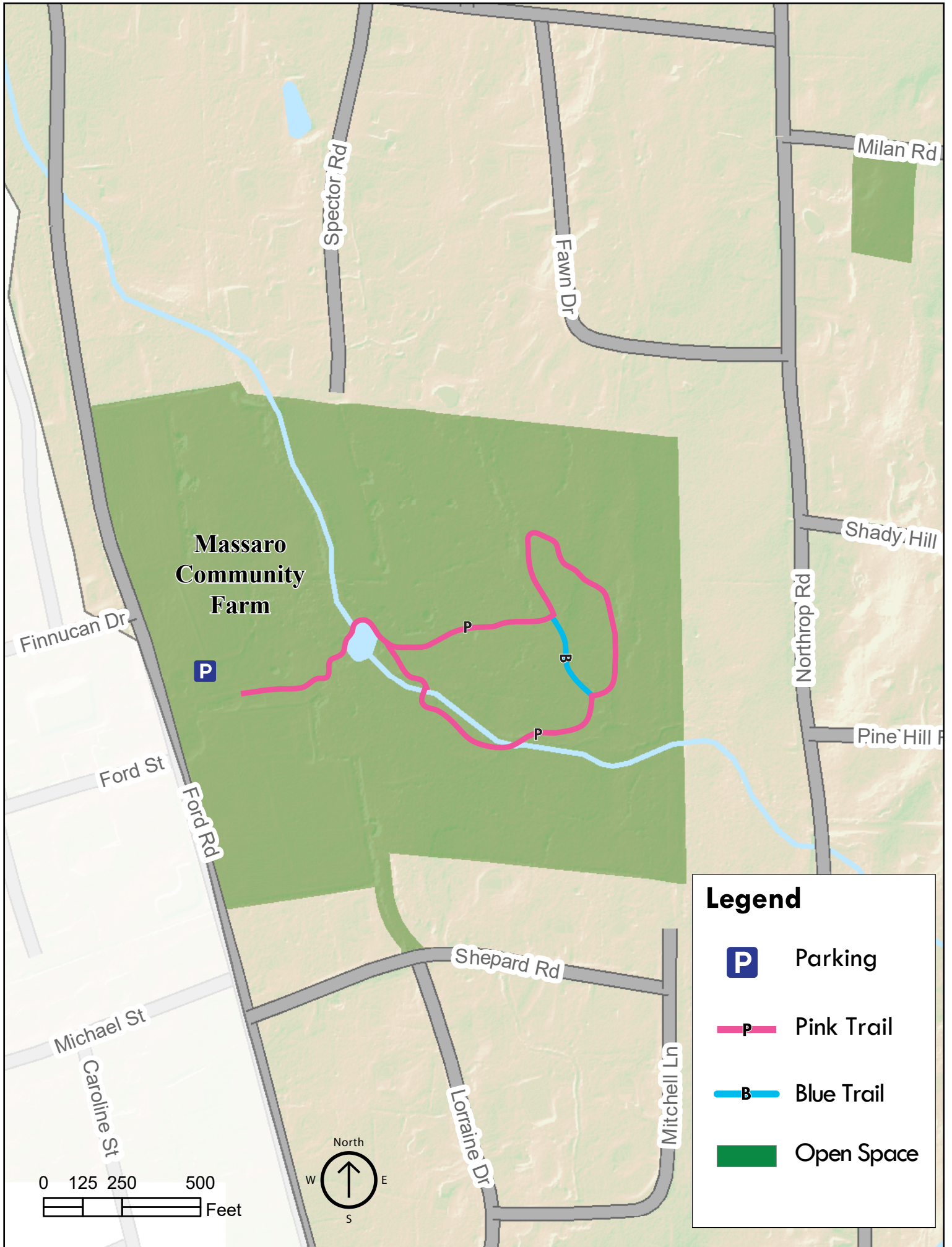
Photo by: Massaro Community Farm

## For more information about this location, contact:

Massaro Community Farm Office  
203-736-8618

<https://massarofarm.org/>





# Massaro Community Farm

## Legend

-  Parking
-  Pink Trail
-  Blue Trail
-  Open Space