

The Town owned Fitzgerald Track Trails, are located in the center of Woodbridge. These 133 acres of meadows and woodland were once part of the Fitzgerald Estate Farm. Later, the town leased the front fields to Fred Shepherd and is now farmed by Keith Arnold. It is a testimony to the Town's agrarian roots and a beacon of the rural quality of life that is revered by the Woodbridge Residents.

These fields, meadows, wetlands and woodlands contain walking fitness trails, community gardens, provide cross country skiing in winter, a calm serene atmosphere where one can relax and wile away the hours of a beautiful day in Woodbridge.

Artists are often seen here recording the landscape on their canvas.

Recently, the Woodbridge Land Trust has established a Chestnut Tree Orchard where several hundred Chestnut saplings are growing in an attempt to breed blight resistant American Chestnut Trees. Flora and fauna abound on this property. Picnic tables and benches are dotted along the way.

From the parking lot, one can proceed past the gardens to the open meadow and into the woodlands continuing north on the main trail meeting Center Road, cross the road and enter the Rice property and on into the Alice Newton Street Memorial Park. An alternate trail leads south to Rimmon Road. The very popular Fitness Trails loop around the two large open fields to the north of the parking lot. The new state-of-the-art Firehouse is adjacent to the lower loop trail.

On the southside of the parking lot, one can enter the woods at the Blue Trail marking and continue to Beecher Road. There, cross the street and continue on the Naugatuck Trail through Race Brook Estates trail system, out to Pease Road and beyond.

### Directions and Parking:

The parking lot is located in the Center of Woodbridge, just off of Beecher Road, south of Center Road.

### Permitted/Prohibited Activities:

The Fitzgerald Track is open dawn to dusk. Dogs must be leashed. Please bag and remove any dog waste. Picking of wildflowers or intruding into the community gardens is prohibited. Garden plots are available by permit. This is a conservation area and passive recreation area that must be respected. No camping, fires, or motorized vehicles on trail areas.



Hiking



Pets on Leash

### For more information about this location, contact:

Town of Woodbridge  
(203-389-3400  
[www.woodbridgect.org](http://www.woodbridgect.org)

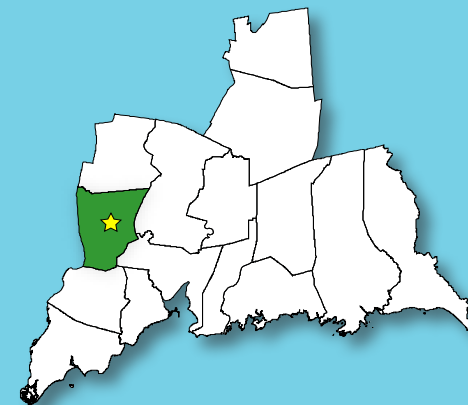
Questions regarding this brochure can be addressed to  
South Central Regional Council of Governments  
Phone: (203) 234-7555/Fax: (203) 234-9850  
E-mail: [trails@scrcog.org](mailto:trails@scrcog.org)

Scan QR Code to access the South Central Regional Council of Governments Recreational Trails Webpage



## Recreational Trails South Central Connecticut

# Fitzgerald Tract Trails



Woodbridge, CT



# Fitzgerald Tract Trails



Photo by the Woodbridge Land Trust

## Trail Description:

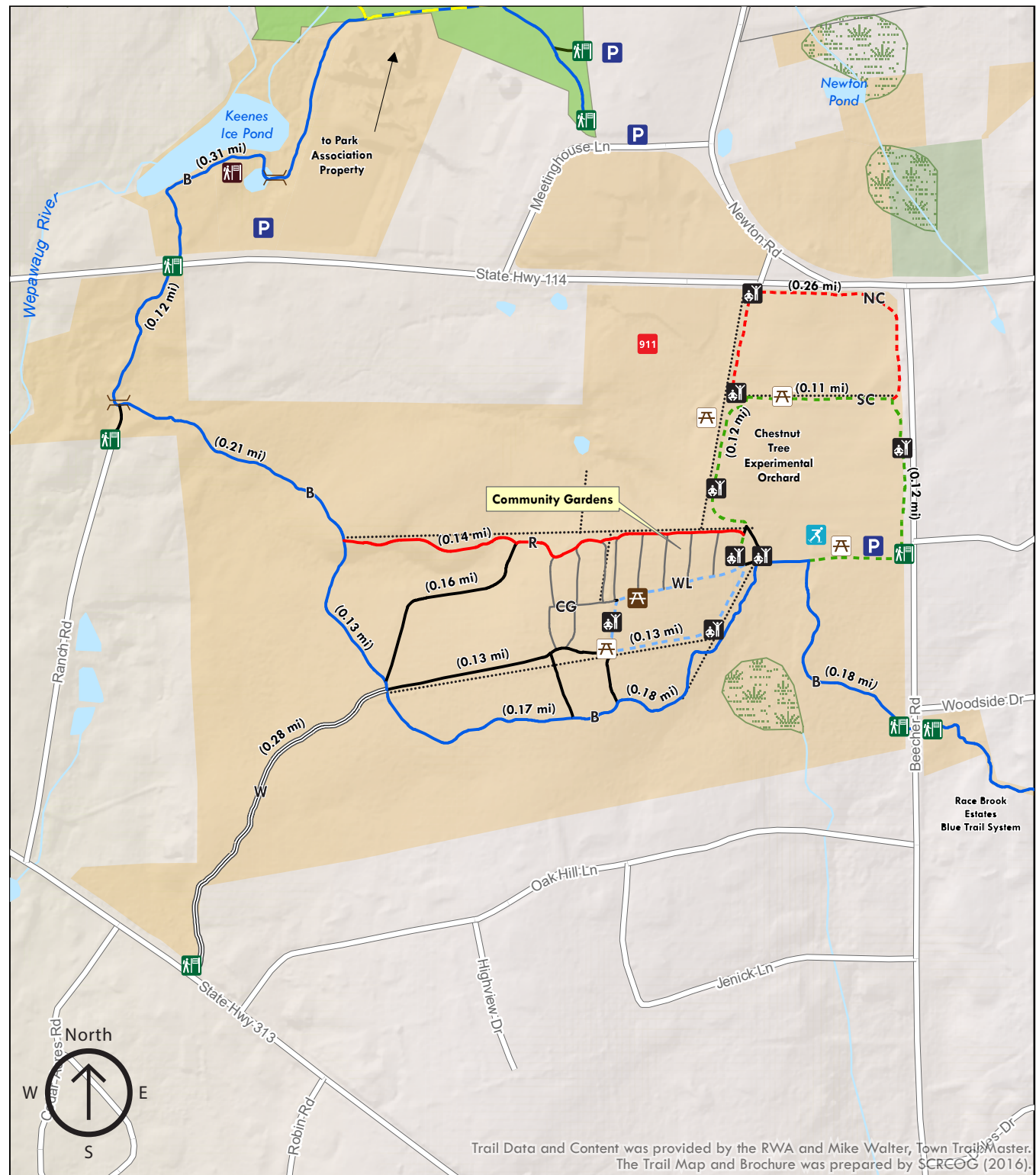
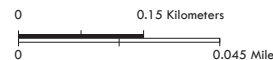
### Easy Hike

The Fitzgerald Tract Trails are an easy walk through and around the Woodbridge Community Gardens. There are two surrounding trails that one can extend their hike on if they wish.

Total trails distance is approx. 2.5 miles

## Legend

- |                        |                                      |
|------------------------|--------------------------------------|
| Parking                | Exercise/Fitness                     |
| Trailhead/Sign         | Ice skating                          |
| Picnic area            | Bridge                               |
| Bench                  | Firehouse                            |
| Blue (Naugatuck Trail) | Woodbridge Park Association Property |
| Red Blaze              | Land Trust Property                  |
| White Blaze            | Town Property                        |
| South Cornfield Loop   | Wetlands                             |
| North Cornfield Loop   |                                      |
| West Loop              |                                      |
| Community Garden Paths |                                      |
| Other Trail            |                                      |
| Stone Wall             |                                      |



Trail Data and Content was provided by the RWA and Mike Walter, Town Trails Master. The Trail Map and Brochure was prepared by SCREOG (2016).