

This map shows the continuation off the Old Naugatuck Trail into the heart of Woodbridge. The trail runs along some paved roads due to modern development, but most of it is in its original known location, especially through the Alice Newton Street Memorial Park. This trail connects the Elderslie Preserve to Fitzgerald after passing through Wepawaug Falls and Alice Newton Street Park. Enjoy the beauty of wetlands, a pond for fishing or winter ice skating, the serenity of the Wepawaug River and Wepawaug Falls and hardwood forest stands. Finish out the hike by having lunch at the pavilion with picnic tables, letting children play on Hitchcock Playground or maybe even catch a baseball game at Center Field.



Photo provided by the Woodbridge Park Association



Photo provided by the Woodbridge Park Association

Directions and Parking:

Parking is available at Route 114 at Center Field. Parking is also available at the junction of North Race Brook Road and Indian Trail Road.

Permitted/Prohibited Activities:

Passive recreation including hiking, running, bicycling, nature study and picnic area. Pets must be leashed. Please bag and remove any dog waste.



Picnic Area



Hiking



Pets on Leash



Bicycling

For more information about this location, contact:

Town of Woodbridge
 (203) 389-3400
www.woodbridgect.org

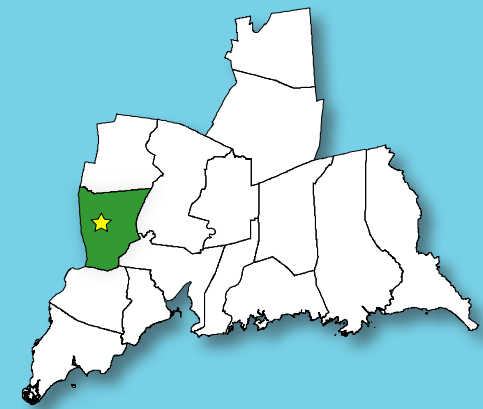
Questions regarding this brochure can be addressed to
 South Central Regional Council of Governments
 Phone: (203) 234-7555/Fax: (203) 234-9850
 E-mail: trails@scrcog.org

Scan QR Code to access the South Central Regional Council of Governments Recreational Trails Webpage



Recreational Trails South Central Connecticut

Meadows Tract to Fitzgerald Tract Blue Trail



Woodbridge, CT



Meadows Tract to Fitzgerald Tract: Blue Trail



Photo provided by the Woodbridge Park Association

Trail Description:

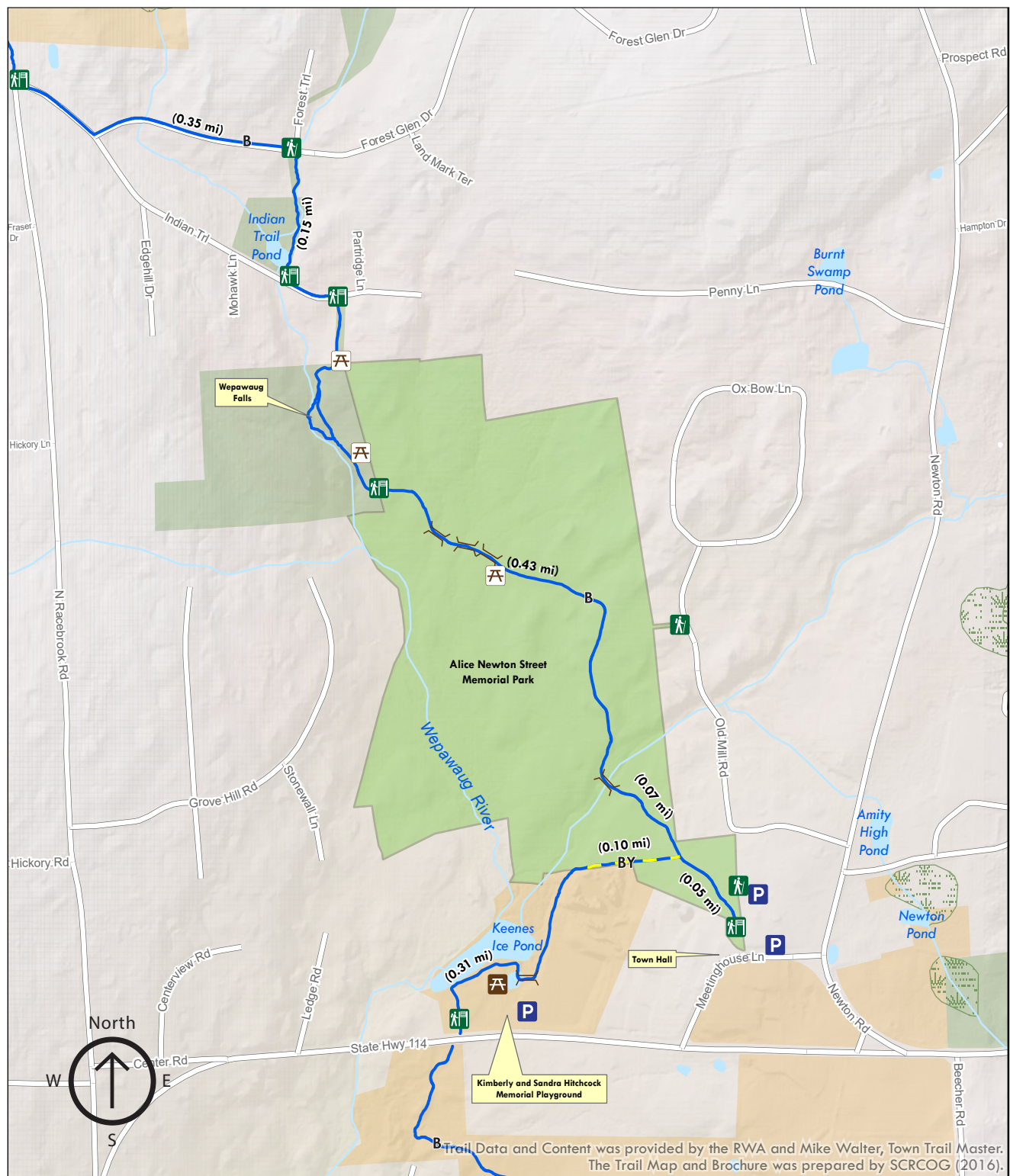
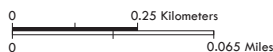
Easy Walk to Moderate Hike

The trail runs along a paved road at the northern and through some wet river areas to some waterfalls. Continues through Alice Newton Street Memorial Park (Private) owned by the Woodbridge Park Association into some town owned land where there is a pavillion as well as Kimberly and Sandra Hitchcock Memorial Playground, a small children play park.

Trail length is approx. 2.0 miles

Legend

- | | | | |
|--|--------------------------------------|--|-------------|
| | Parking | | Bench |
| | Trailhead/Sign | | Picnic Area |
| | Trailhead | | Bridge |
| | Blue (Naugatuck Trail) | | |
| | Blue with Yellow | | |
| | Wetlands | | |
| | Woodbridge Park Association Property | | |
| | Land Trust Property | | |
| | Town Property | | |



Trail Data and Content was provided by the RWA and Mike Walter, Town Trail Master. The Trail Map and Brochure was prepared by SCRCOG (2016).