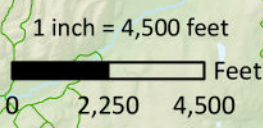
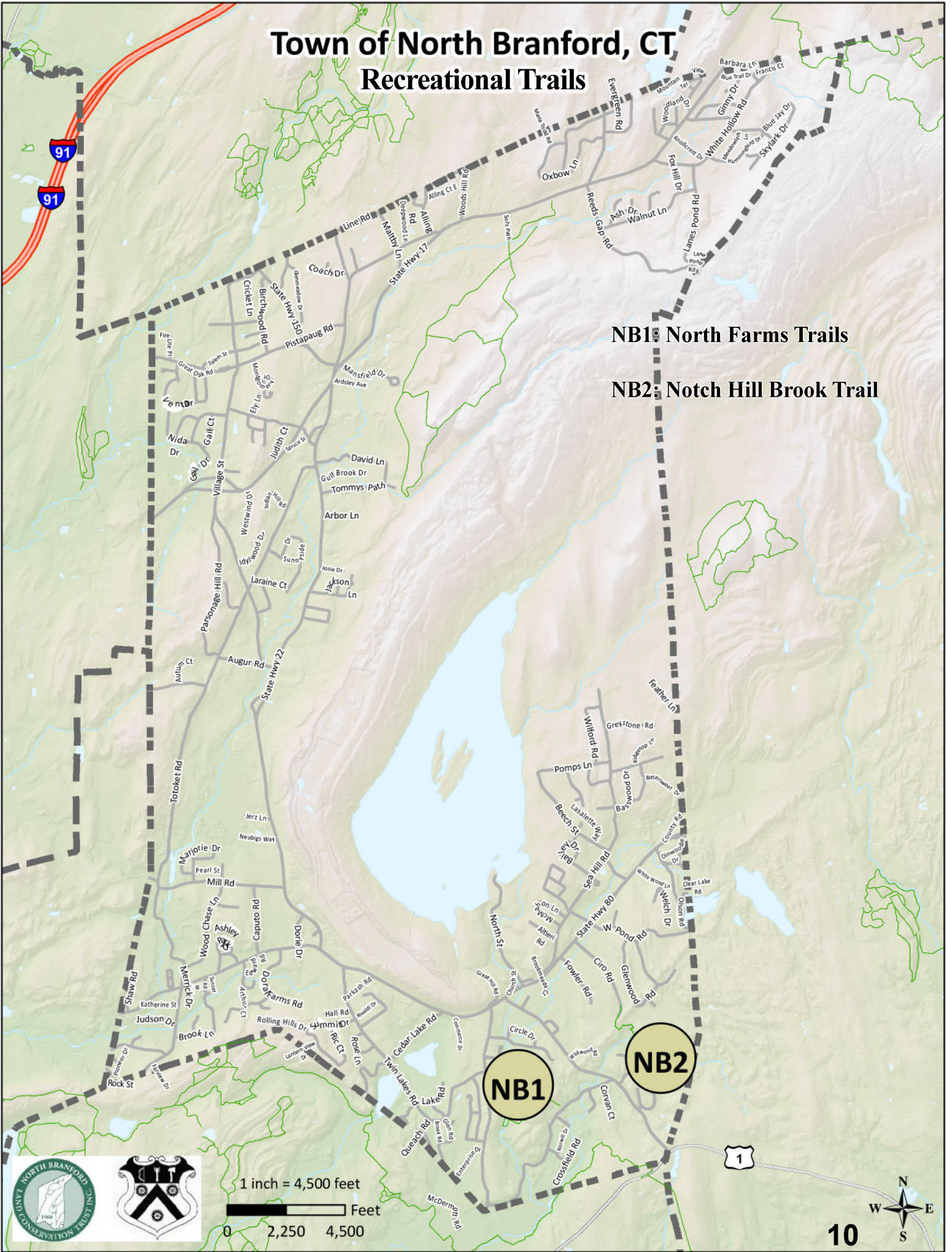


Town of North Branford, CT Recreational Trails

NB1: North Farms Trails

NB2: Notch Hill Brook Trail



North Farms Trails

North Branford was originally part of the Totoket settlement (purchased in 1638 from the Indian chief Montowese). The Totoket area was bounded on the south by Long Island Sound, on the west by the Stony River (Farm River) and the Great Pond (Lake Saltonstall). At that time, the northerly areas of the Branford/Totoket settlement were primarily cleared for orchards and farming and were known as "North Farms." North Branford was incorporated as a town in 1831.

As a lasting commemorative of the nation's bicentennial in 1976, a 77-acre tract of land on the Branford River was purchased for a park and, in a town-wide contest, named North Farms, the original designation of the area. North Farms Park has three primary trails with varying degrees of difficulty.

The Yellow Trail is designed to be a safety trail that can be used by all ages with little or no hiking skills needed. The trail runs northeast to the Branford River. Once across the river, this trail runs north to south. The Orange Trail is also a relatively easy trail. This is a short trail located in the northeastern part of the park. It connects the northern portions of the Yellow and White Trails. This trail virtually divides the park in half.

The White Trail is the most difficult trail and requires some expertise in hiking skills. The trail runs north along the perimeter of the park and leads to the Branford River where there is no way to cross at the present time. The trail is picked up on the northeastern side of the river and intersects with the northern end of the Yellow Trail and continues southeasterly along the perimeter. At the eastern point it intersects with the Orange Trail and then continues to Valley Road.

This area has a steep incline. The trail then turns to the southwest and descends on a steep hill which leads to the area of the old dams where the trail dead ends at the Branford River. This is also the intersection of the Yellow Trail at its southern point. On the southwestern corner of the park, the White Trail heads north through moderate woods and climbs a steep upgrade to the southern end of the open field.

Trail Description:

Easy Hike

The North Farms trail is a nice hike through the woods of North Branford. The trail begins in North Farms Park where there is a playground, sports fields and a picnic pavilion.

Total trail distance is approx. 1.12 miles

Directions and Parking:

I-95 to Exit 56 (Route 146, Leetes Island Road, Stony Creek, Branford). Take Leetes Island Road (Route 146) north. Go to the traffic light, the USS Chowder Pot restaurant is directly in front of you. Stay straight onto School Ground Road. Follow School Ground Road until you come to a 'T'-intersection with Route 139 (North Branford Road). Take a right. The entrance to North Farms Park will be roughly 1/2 mile to 1 mile on your right.

Permitted/Prohibited Activities:

This property is for passive use only. No wheeled vehicles are permitted. Picnicking is available in the pavilion. The trail is for hiking only. Dogs are permitted on leash. Please bag and remove any dog waste.

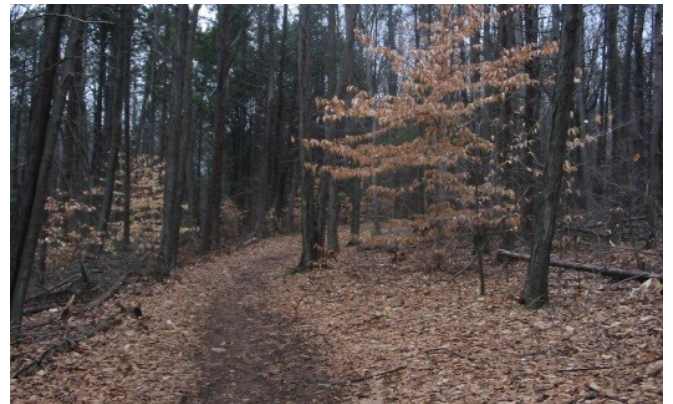


Photo by North Branford Recreation Department

Total Trails Length: Approx. 1.12 miles

Yellow Trail: 0.54 miles. Easy Hike

Red Trail: 0.19 miles. Easy Hike

Orange Trail: 0.26 miles. Easy Hike

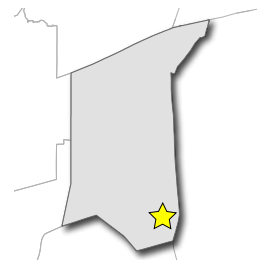
Orange/Yellow Trail: 1.20 miles. Easy Hike

White Trail: 0.47 miles. Easy Hike

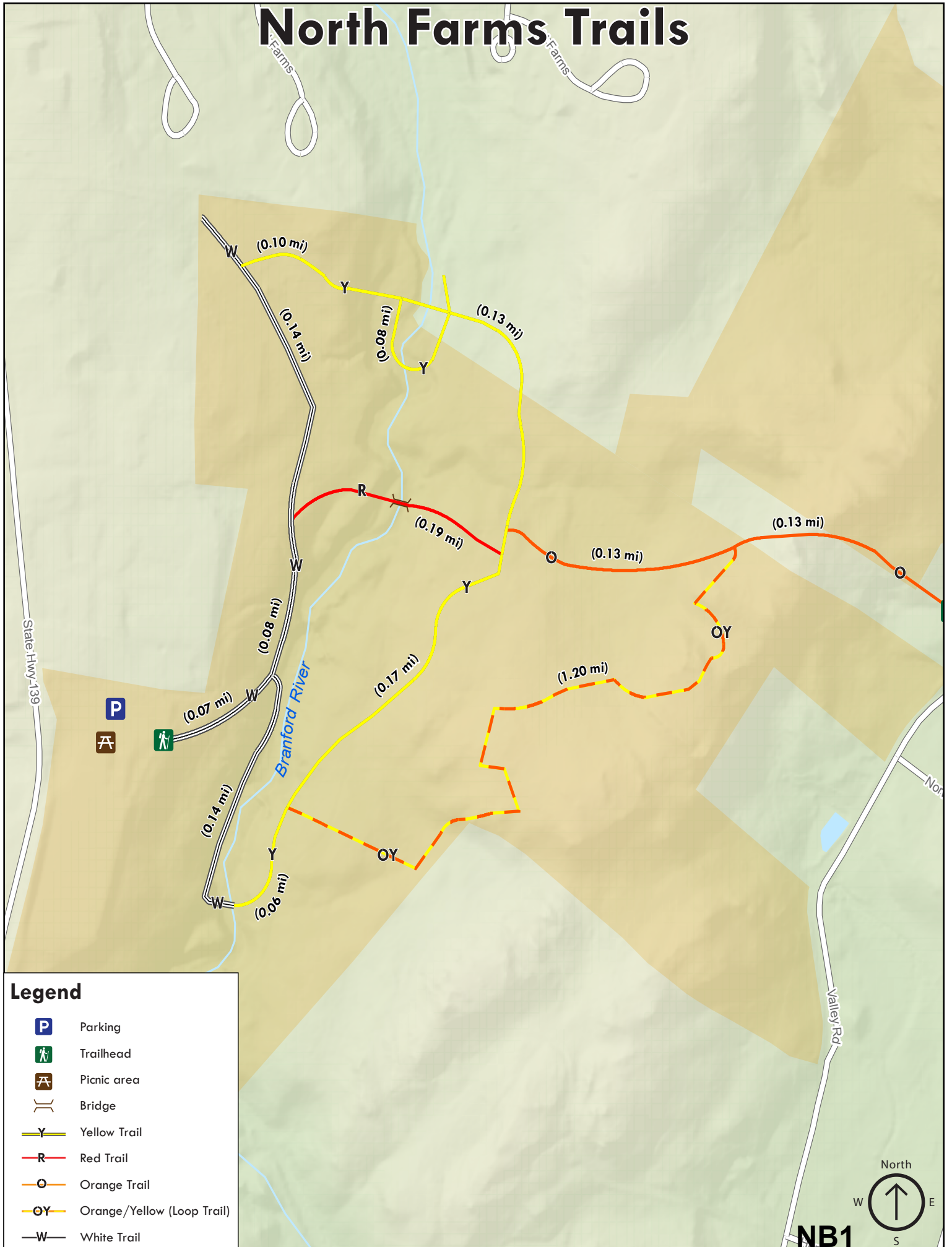


For more information about this location, contact:

Town of North Branford
Parks and Recreation
(203) 315-6017



North Farms Trails



Notch Hill Brook Trail

The Notch Hill Brook Trail is a new trail in North Branford created by the North Branford Land Conservation Trust. Known as the 'Red Trail', it starts on town property and crosses a historic defunct trolley line. Once on land trust property, the trail becomes a loop in a secluded and undisturbed woodland.

Just under 2 miles, the red blazes lead you through a valley, across photogenic Notch Hill Brook, around swampland and up rocky out-croppings.



Photo by North Branford Land Conservation Trust



Photo by North Branford Land Conservation Trust

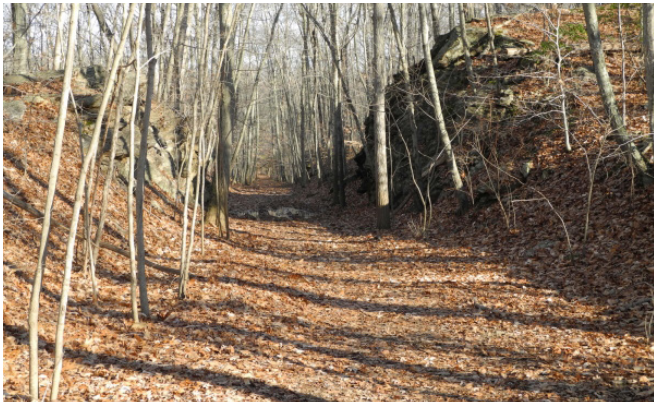


Photo by North Branford Land Conservation Trust

Directions and Parking:

From I-95: Take exit 55 and head east on Route 1. Take the first left onto North Branford Road (Route 139). Follow route 139 until it intersects with Route 80 and turn right. In about .8 miles turn right onto Ciro Road. Parking is in the cul-de-sac.

Permitted/Prohibited Activities:

This is a recreational trail only. No motorized vehicles. Pets are welcome but must be leashed. Please pick up all pet waste.

Total Trails Length: *Approx. 1.59 miles*

Trail Description:

Moderate Hike

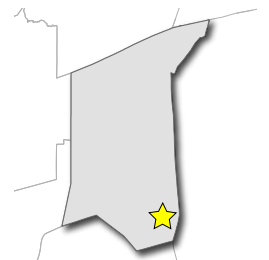
The Notch Hill Brook trail winds through town and land trust property. It is a short, but moderately challenging, hike. It is good for families looking for a weekend activity with some steep ascents and descents.

Round trip trail distance is approx. 1.59 miles

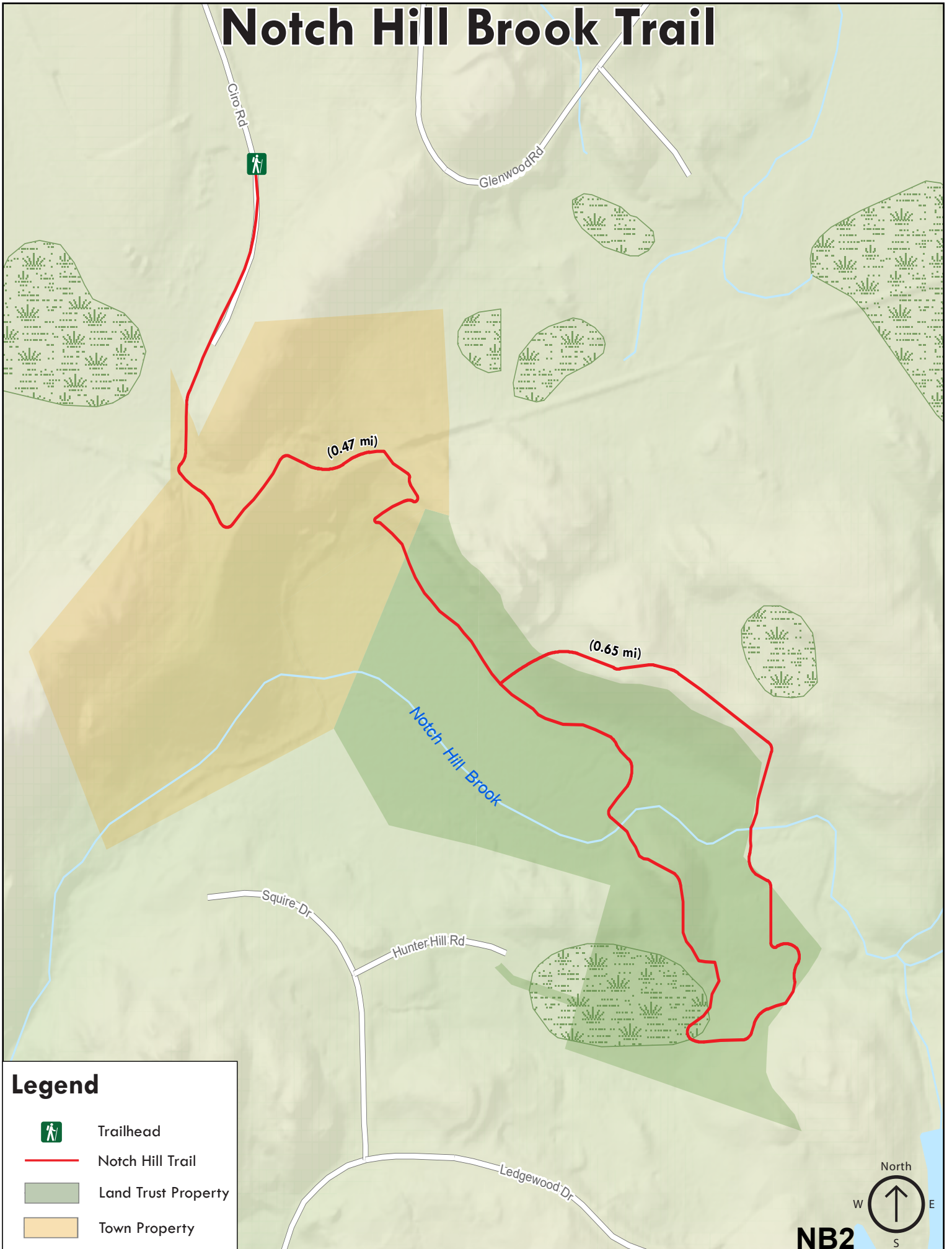


For more information about this location, contact:

Town of North Branford
Parks and Recreation
(203) 315-6017



Notch Hill Brook Trail



Legend

-  Trailhead
-  Notch Hill Trail
-  Land Trust Property
-  Town Property



NB2