

Town of North Haven, CT Recreational Trails

**NOH1: Julius M. Hansen
Park**

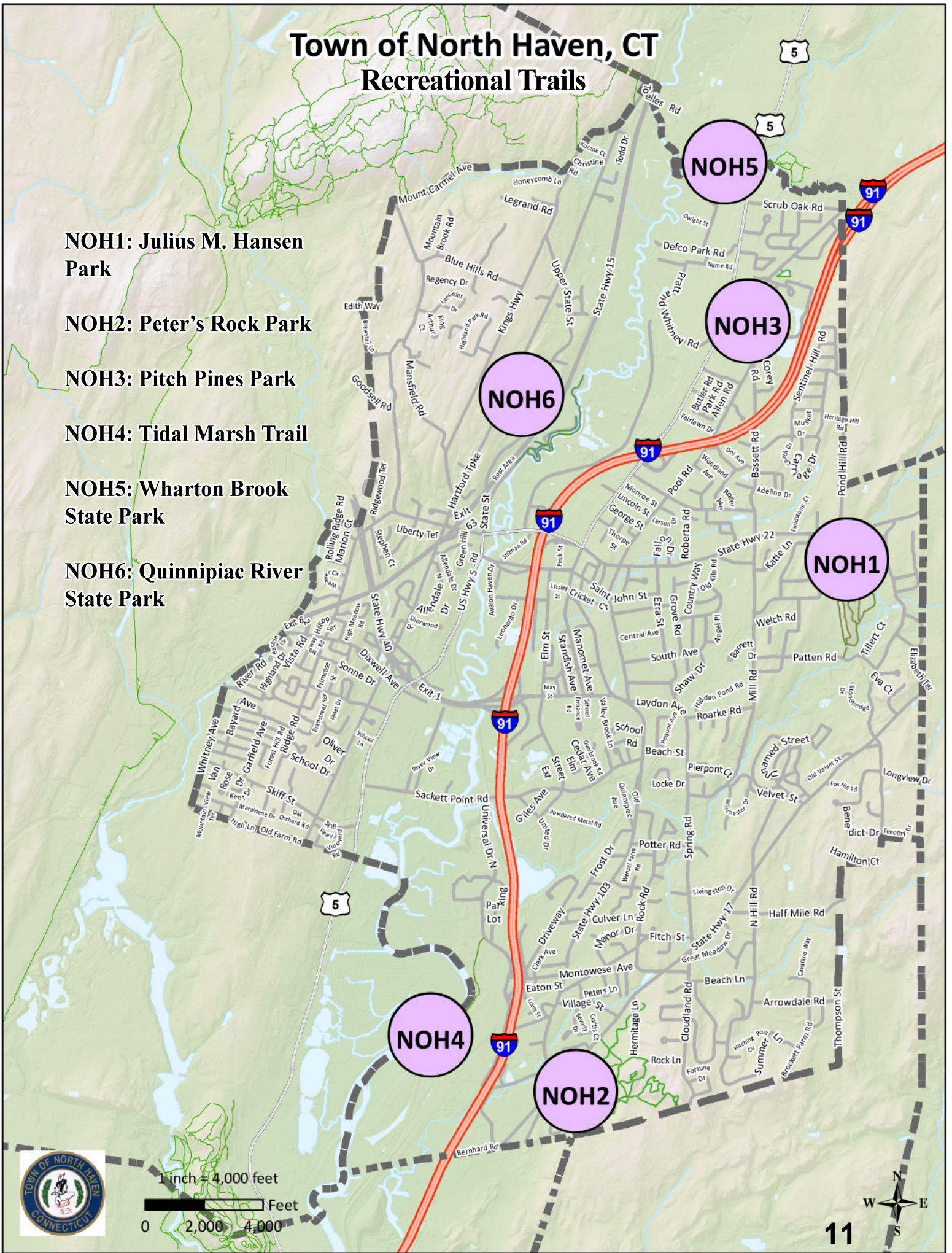
NOH2: Peter's Rock Park

NOH3: Pitch Pines Park

NOH4: Tidal Marsh Trail

**NOH5: Wharton Brook
State Park**

**NOH6: Quinnipiac River
State Park**



1 inch = 4,000 feet
0 2,000 4,000 Feet



Julius M. Hansen Park

Julius M. Hansen Park in North Haven preserves a portion of an interesting geological feature of the landscape, a narrow traprock ridge that runs north from Route 17 on the North Branford-North Haven town line into Tyler Mills Park in Wallingford. The Hansen Park section of the ridge rises abruptly from the valley of the Muddy River. Its high point is an elevation of 190 feet and it is about 50 to 100 feet wide, although the walkable portion of the ridge is maybe 10 to 20 feet wide with sharp drops to the east and west. The ridge gradually loses elevation as it runs northward, approaching Clintonville Road (Route 22), which runs through a gap as the main ridge climbs again north of this thoroughfare. To the south of Hansen Park, the traprock ridge line resumes just beyond the Muddy River valley. The whole ridge is basically shaped like a bow facing westward and is composed of buttress dolerite, a different type of rock than the various types of basalt that form the principle traprock ridges in Connecticut and Massachusetts.

The Hansen Park ridge might have, at one point, been referred to as Rimmon Ridge as it resembles Beacon Falls's Rock Rimmon in shape and relation to the surrounding landscape. The nearby Rimmon Road would seem to corroborate such a supposition, although no other recorded evidence supports such a claim. Hansen Park has a trail system consisting of three blazed trails and two unmarked trails. All three blazed trails meet at the northern and southern ends of the ridge. The blue trail ascends steeply from the parking lot at Patten Road to the top of the ridge, which it follows for perhaps half a mile. The yellow trail loops around the western side of the ridge, and the red trail loops around the eastern side. There is a wide field to the east of the ridge along which flows the Muddy River. To the west of the ridge lies a swampy area and further south a former farm which is also owned by the town of North Haven. Suburban homes cluster around the northern borders of the ridge. Views from the ridge top are extensive, if obscured by trees. It is possible to see, to the west, Sleeping Giant, New Haven harbor and West Rock Ridge, and to the east, Totoket Mountain. The view to the south includes the southern continuation of the ridge and some agricultural fields. A stand of tall conifers grows on the northeast side of the ridge and provides a more boreal feel than the surrounding area.

Trail Description:

Easy to Moderate Hike

Julius M. Hansen Park offers four different trails through varying types of terrain. There is a picnic area available by the parking lot off Patten Road.

Total trail distance is approx. 2.17 miles

Directions and Parking:

From exit 12 off Interstate 91, turn left onto Blakeslee Avenue and follow until it ends at Bassett Road. Take a right at Bassett Road and continue straight onto Mill Roads through the intersection with Clintonville (Route 22). Take a left onto Patten Road and continue. The entrance will be on the left.

Permitted/Prohibited Activities:

This is a recreational area with hiking trails and picnic areas. No motorized vehicles allowed. Dogs are welcome but must be leashed. Please pick up all waste.



Photo by Emmeline Alaconis, SCRCOG

Total Trails Length: Approx. 2.17 miles

Blue Trail: 0.47 miles. Easy to Moderate Hike

Yellow Trail: 0.59 miles. Easy to Moderate Hike

Red Trail: 0.57 miles. Easy to Moderate Hike

Unblazed Trail: 0.54 miles. Easy to Moderate Hike

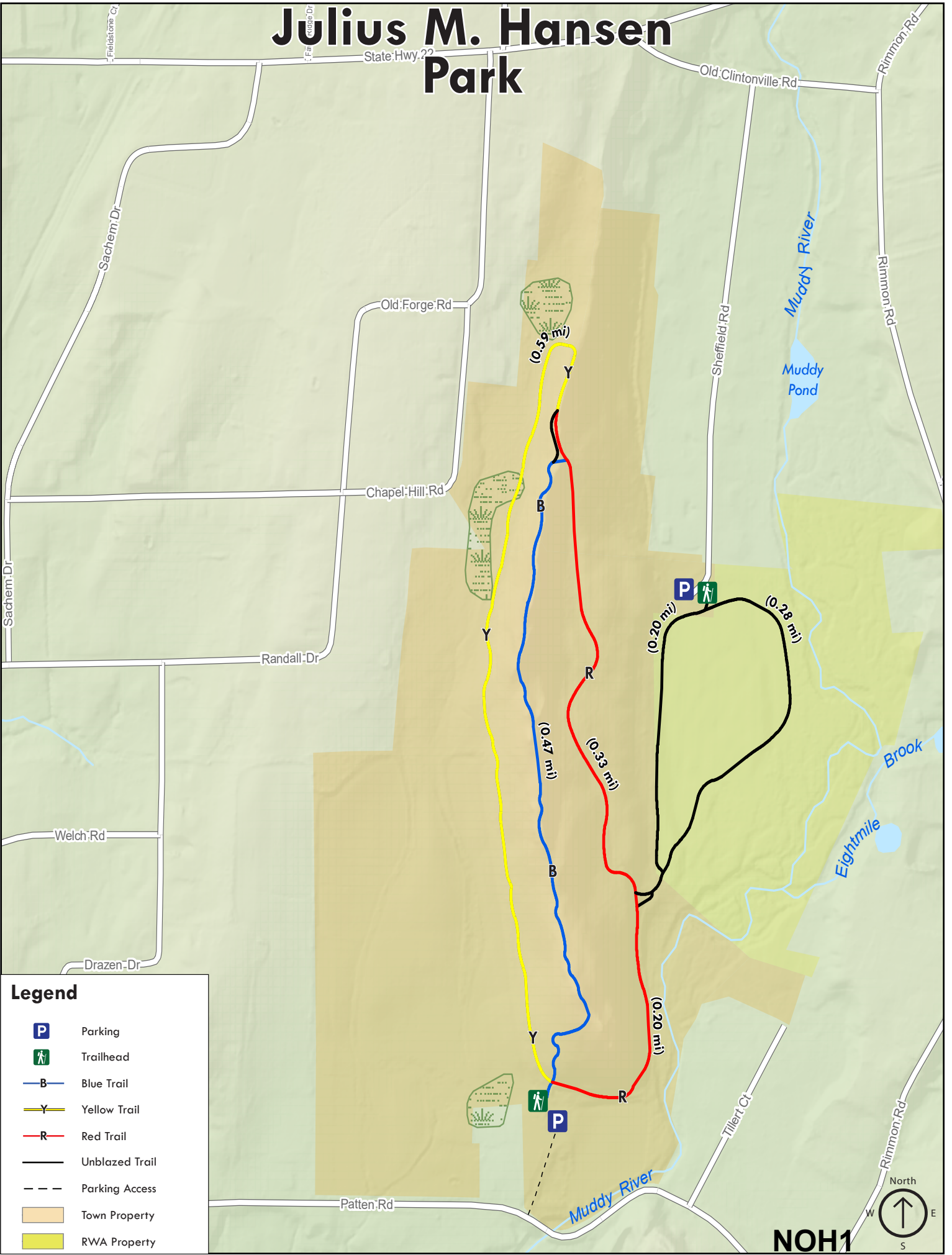


For more information about this location, contact:

North Haven Department of Public Works
(203) 239-5321, ext. 750



Julius M. Hansen Park



Legend

- Parking
- Trailhead
- Blue Trail
- Yellow Trail
- Red Trail
- Unblazed Trail
- Parking Access
- Town Property
- RWA Property

NOH1



Peter's Rock Park

Peter's Rock is the highest point (373 feet above sea level) and largest parcel of open space (220 acres) in North Haven. The view from the summit is expansive: to the north, you can see Sleeping Giant and the Hanging Hills of Meriden; to the east, Branford and North Branford; and to the south, New Haven harbor. Peter's Rock is listed on the National Register of Historic Places.

Peter's Rock's principal geological feature is unique. On the western side, which is its boldest face, its pentagonal columnar formations are unlike most other rock upheavals that are part of an extensive chain of trap rock intrusions running from New Haven to the Massachusetts border.

Its main geographic features are a second-growth mixed hardwood forest, high quality wetlands, and rock outcrops. Steep slopes are found especially in the central and southern portions of the site. A stream, which flows east to west and is eight to twelve feet wide, runs through the center of Peter's Rock.

For many years Peter's Rock (then known as Indian Rock) served as an Indian lookout. Among the farmers who later claimed Indian Rock was Peter Brockett, a Revolutionary War veteran who built a small hut at the northern base of the mountain and lived there for many years. Brockett named the site Peter's Rock.

In 1901 a group of wealthy New Haven businessmen rented the summit and built an elegant hunting lodge, which they named "The Hermitage." It was used until the Great Depression, when it was abandoned. All that is left of the lodge are a few anchor rods and a dilapidated wine cellar on the southern edge of the summit. A reduced scale replica of the lodge has recently been constructed at the main entrance to Peter's Rock Park on Middletown Avenue.



Photo by Emmeline Alaconis, SCRCOG

Trail Description:

Easy to Difficult Hike

Peter's Rock Park offers several trails on site of varying difficulties. All of the trails are under 1 mile in length but they can be walked in various different combinations to create longer hikes. While most trails are easy to moderate hikes, the red trail to the summit is steep and difficult but rewards the hiker with serene views.

Total trail distance is approx. 5.34 miles

Directions and Parking:

Peter's Rock Park main entrance is located off of Route 17 (133 Middletown Avenue) and is minutes from the New Haven/North Haven town line. Use exit 8 or 9 off of I-91, whether traveling from the north or south, to find the park just minutes away.

Permitted/Prohibited Activities:

Alcoholic beverages are absolutely prohibited along with motorized vehicles, hunting, dumping, littering, swimming, smoking and fires. Please leave with what you bring in. Take only pictures, leave only footprints.



Photo by Town of North Haven

Total Trails Length: Approx. 5.34 miles

Light Blue Trail: 0.56 miles. Easy to Moderate Hike

Violet Trail: 0.71 miles. Easy to Moderate Hike

Orange Trail: 0.75 miles. Easy to Moderate Hike

Red/White Trail: 0.09 miles. Easy to Moderate Hike

Light Blue/Orange Trail: 0.04 miles. Easy to Moderate Hike

Green/Orange Trail: 0.04 miles. Easy to Moderate Hike

White Trail: 0.42 miles. Easy to Moderate Hike

Red Trail: 0.95 miles. Hard Hike

Yellow Trail: 0.73 miles. Easy to Moderate Hike

Green Trail: 0.53 miles. Easy to Moderate Hike

Blue Trail: 0.85 miles. Easy to Moderate Hike

Khaki Trail: 0.20 miles. Easy to Moderate Hike

Pink Trail: 0.22 miles. Easy to Moderate Hike



For more information about this location, contact:

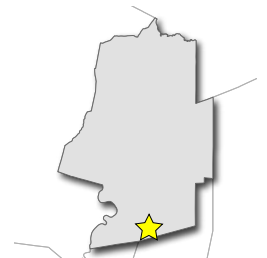
Peter's Rock Association

P.O. Box 762

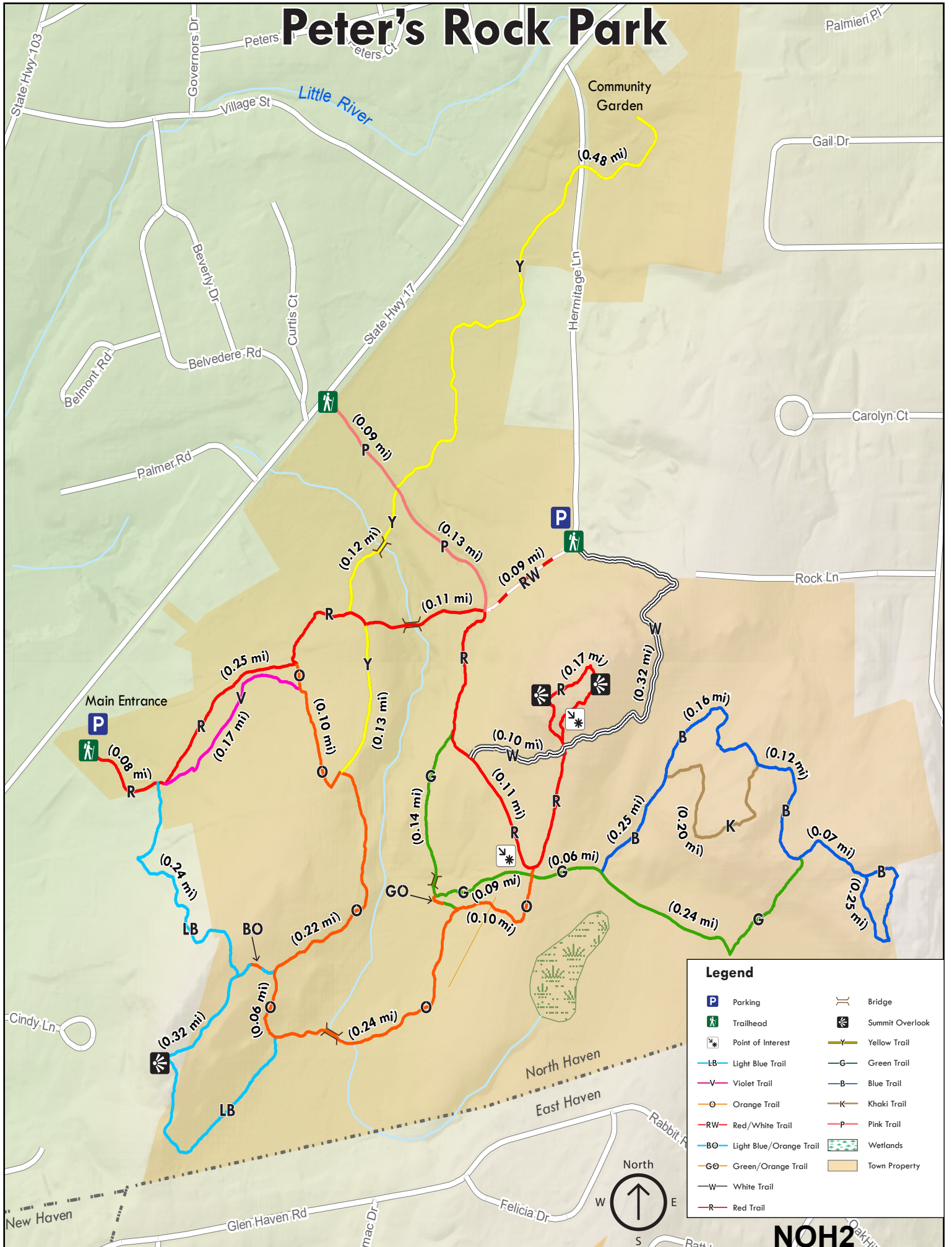
North Haven, CT 06473

(203) 239-5321, ext. 750

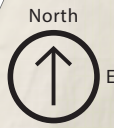
www.petersrockassociation.org



Peter's Rock Park



Legend			
	Parking		Bridge
	Trailhead		Summit Overlook
	Point of Interest		Yellow Trail
	Light Blue Trail		Green Trail
	Violet Trail		Blue Trail
	Orange Trail		Khaki Trail
	Red/White Trail		Pink Trail
	Light Blue/Orange Trail		Green/Orange Trail
	White Trail		Wetlands
	Red Trail		Town Property



Pitch Pines Park

This small park is located on North Haven's last undeveloped parcel of sand plain, which was formed at least 15,000 years ago as the last melting glacier deposited sand and gravel debris in this area. With little nutrients available, the stony, sandy soil normally supports little plant growth, but the Pitch Pine has managed to adapt to this difficult environment.

The Pitch Pine (*pinus rigida*) is an ancient plant species and one of only two conifers that has the ability to sprout needles from its trunk or along the thicker branches. This unique adaptation allows the plant to survive if the main trunk is damaged by fire. The pitch pine is so named because it oozes large quantities of resinous sap which was once collected for the pitch used in wooden ship building.

The lifespan of a Pitch Pine is around 200 years, and they can be found from southern Maine to northern Georgia. Pitch Pines are the primary tree found in the New Jersey Pine Barrens, but the stand of pines in this park is one of the last to be found in Connecticut. For this reason the Town of North Haven has permanently protected this land from development.



Photo by Emmeline Alaconis, SCRCOG

Trail Description:

Easy Walk

Pitch Pines is a small, easy walk. In the center of the walk is a vernal pool. This hiking area is perfect for short walks or runs while being surrounded by the old pines and other plant life.

Total trail distance is approx. 0.22 miles

Directions and Parking:

Interstate 91 to Exit 13. At the end of the ramp take a left on Route 5 and follow past Wharton Brook State Park. Take a left on Scrub Oak Road just after the park and a right on Bradley Street at the stop sign. The park is about a half-mile down on the left. Cars can park on the street or in the small parking area near the entrance.

Permitted/Prohibited Activities:

The trails are for recreational use. No motorized vehicles. Dogs are allowed but must be leashed. Please pick up all animal waste.

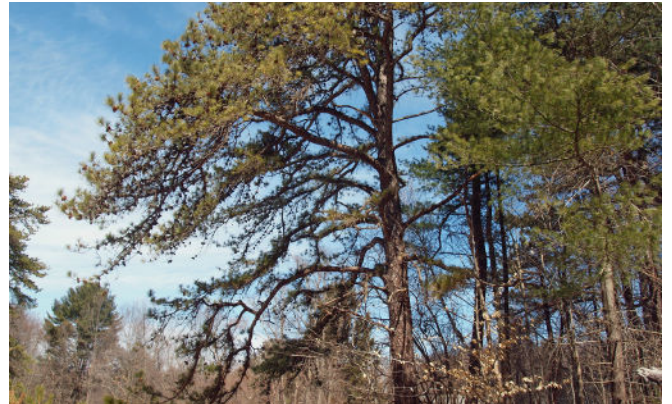


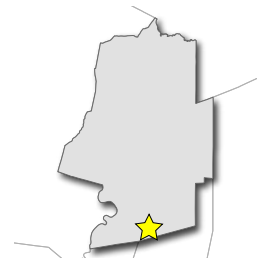
Photo by Connecticut Department of Environmental Protection

Total Trails Length: Approx. 0.22 miles

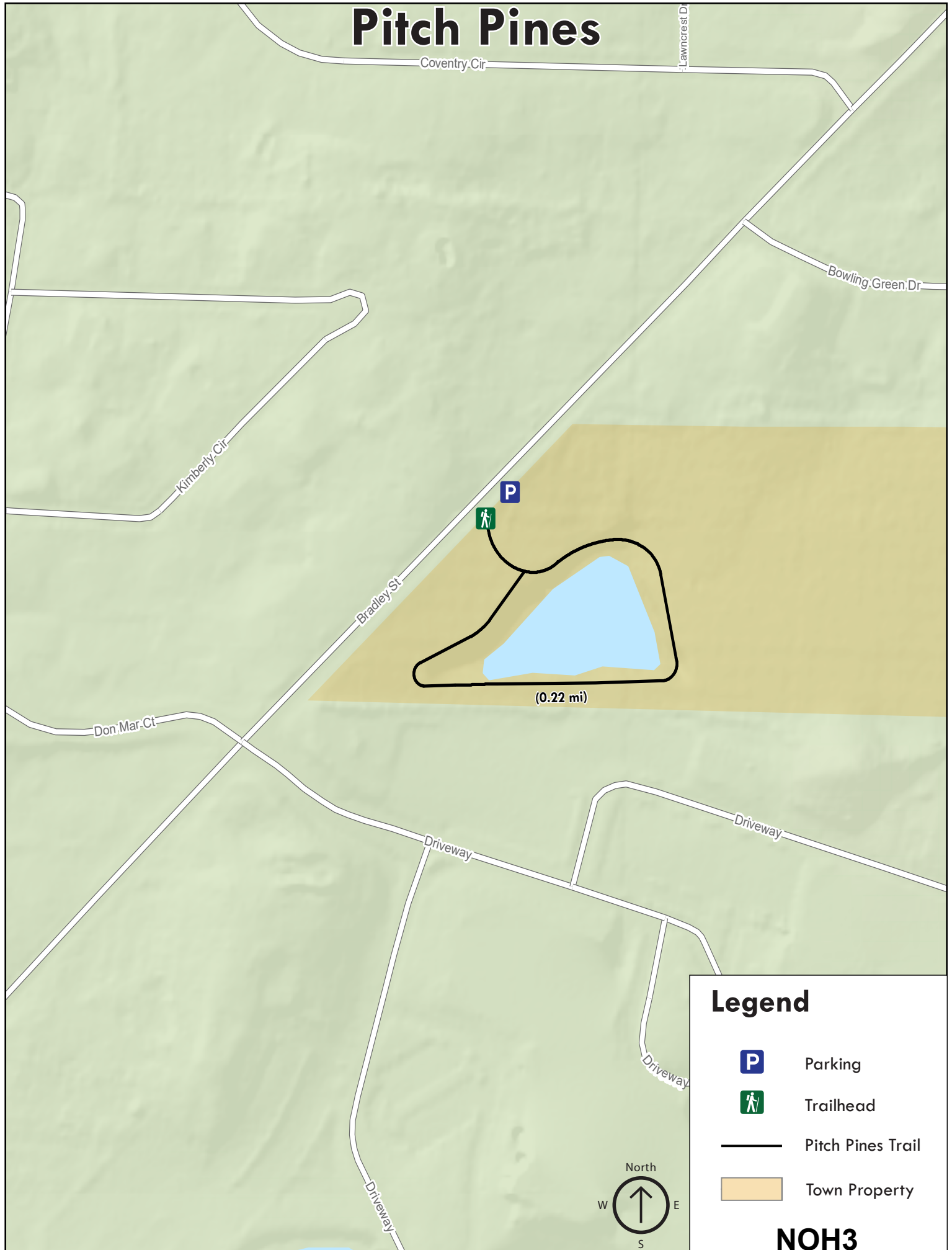


For more information about this location, contact:

North Haven Department of Public Works
(203) 239-5321, ext. 750



Pitch Pines



Coventry Cir

Lawncrest Dr

Bowling Green Dr

Kimberly Ct

P



Bradley St

(0.22 mi)

Don Mar Ct

Driveway

Driveway

Driveway

Driveway

Legend



Parking



Trailhead



Pitch Pines Trail



Town Property



NOH3

Tidal Marsh Trail

The North Haven Trail Association welcomes all recreational hikers and bird-watchers to take a leisurely stroll on the Tidal Marsh Trail, a short but extremely relaxing and educational walk along the Quinnipiac River. Starting high above the river's edge, with stunning views of Sleeping Giant, lower Hamden, and the river's marshes, the trail turns left, meandering south through stands of different species of trees between the water and abandoned Cedar Hill Rail Yard train tracks.

Regardless of the season, expect to be pleasantly surprised by what you may find! The trail offers people an occasion to watch and listen to birds, discover interesting geo-caches, explore a part of the region's commercial/industrial history, or study the varied flora and fauna that make brackish marshes their home.

Please enjoy the views of river, the opportunities to spot eagles, ospreys, ducks, geese, and other migratory birds in or near the water, and the songs of the various types of songbirds in the trees! If you have any questions about the trail, or would like to join us in our efforts to maintain and improve the amenities that we can offer avid trail hikers, please feel free to contact us at info@northhaventrails.org, or to visit us at www.northhaventrails.org or on Facebook!



Photo by the North Haven Trails Association

Trail Description:

Easy Walk

The Tidal Marsh Trail offers wonderful opportunities to bird watch. The trail itself is an easy walk that is about one half mile.

Total trail distance is approx. 0.52 miles

Directions and Parking:

From Exit 9 off of I-91 North and South, take Montowese Avenue Extension to Universal Drive North. Once on Universal Drive North cross over the bridge and take your first left into a shopping complex. Continue on this street all the way to the back of Target and park in the back of the lot. The Trail head will be accessible from here

Permitted/Prohibited Activities:

The trails are for recreational use only. No motorized vehicles. Bicycling is allowed. Dogs are also allowed but must be leashed. Please pick up all animal waste.



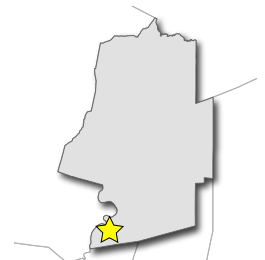
Photo by the Quinnipiac River Fund

Total Trails Length: Approx. 0.52 miles

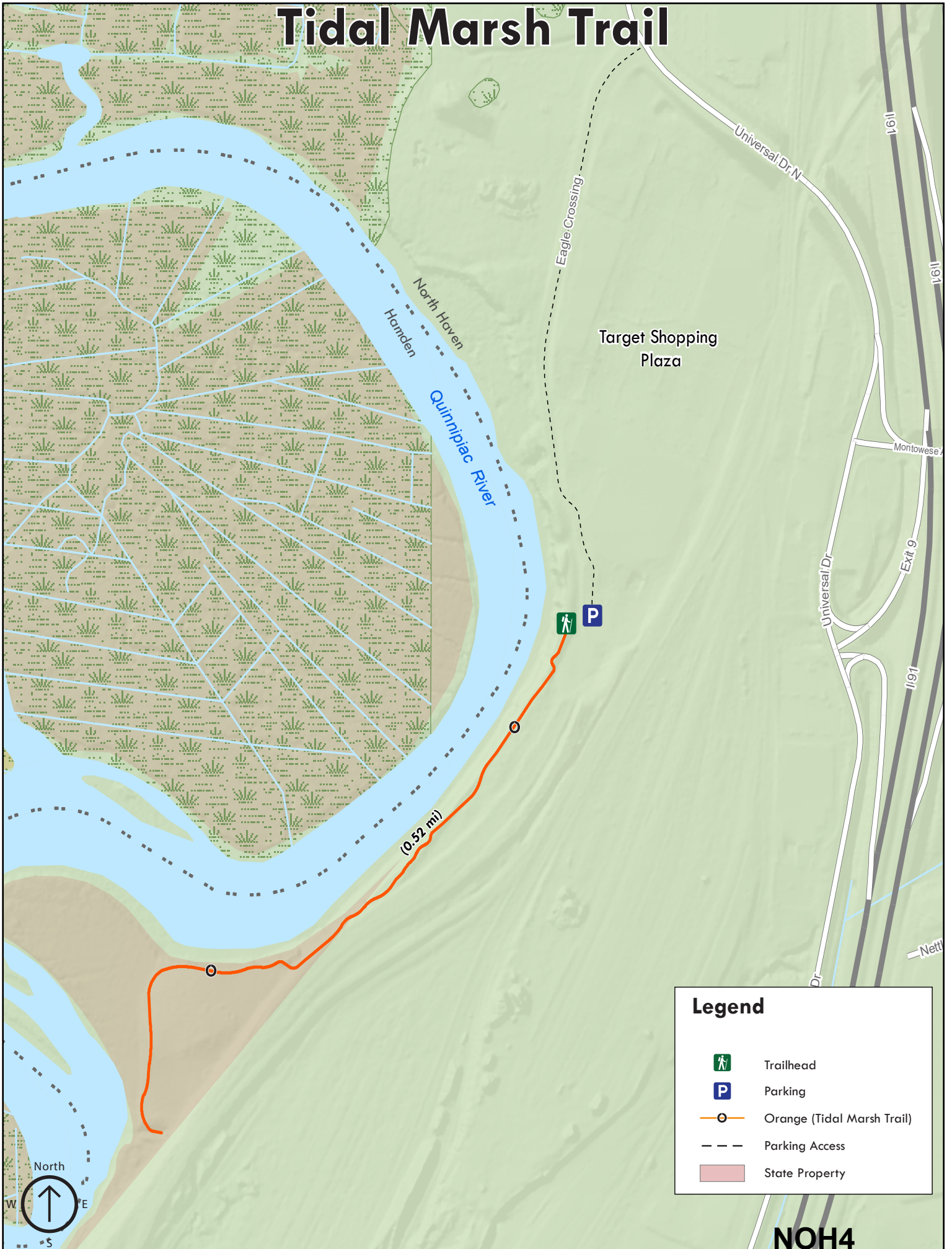


For more information about this location, contact:

North Haven Trails Association
info@NorthHavenTrails.org
www.northhaventrails.org



Tidal Marsh Trail



Legend



Trailhead



Parking



Orange (Tidal Marsh Trail)



Parking Access



State Property

Wharton Brook State Park

The 96-acre Wharton Brook State Park offers visitors a wooded environment for swimming, hiking, fishing, winter ice skating and more. A food concession stand as well as full toilet facilities are also found on the site.

Located on wooded, sandy knolls, Wharton Brook also offers solitude for a quiet, peaceful picnic. The hiking trail provides a perimeter loop around the northern section of park with walking adjacent to the Pond.

Wharton Brook State Park is one of the 11 water bodies in Connecticut designated as Trout Parks by the Department of Environmental Protection's (DEP) Fisheries Division. Trout Parks are located in easily accessible areas to enhance trout fishing opportunities for young anglers and novice anglers as well as for those with mobility challenges.

The frequent stockings, generally between Opening Day and Memorial Day, will greatly increase an angler's chances of catching a fish, making it a more attractive "fishing hole", particularly to children and families. Although the Trout Parks will have more fish in them, their daily creel limit (the number of trout an angler can keep) has been reduced from five to two fish per day in order to spread the catch among a greater number of anglers.

Please note: there is a weekend/holiday fee for admittance at Wharton Brook State Park.



Photo by the Department of Environmental Protection

Trail Description:

Easy hike

Wharton State Park is located along US Route 5 (part of the national Highway System) which runs from New Haven up to Massachusetts. From 1918-1920, Wharton State Park was known as a traveler's wayside; motorists could stop to have their cars serviced and enjoy a quiet picnic lunch. Today, picnickers can still stop and enjoy the outdoors with a hike and some lunch.

Total trails distance is approx. 0.93 miles

Directions and Parking:

From I-91 (north or south): take Exit 13. Take a left at the end of the long exit ramp onto Route 5 south. Park entrance is a tenth of a mile on the left. Parking is located adjacent to the entrance.

Permitted/Prohibited Activities:

Fishing, swimming and picnicking are allowed at the Park. Dogs are allowed on leash in the picnic area. Please bag and pick up all dog waste.



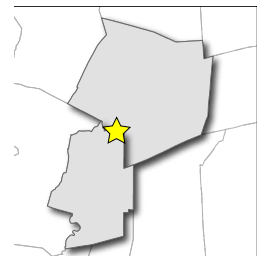
Photo by the Department of Environmental Protection

Total Trails Length: Approx. 0.93 miles

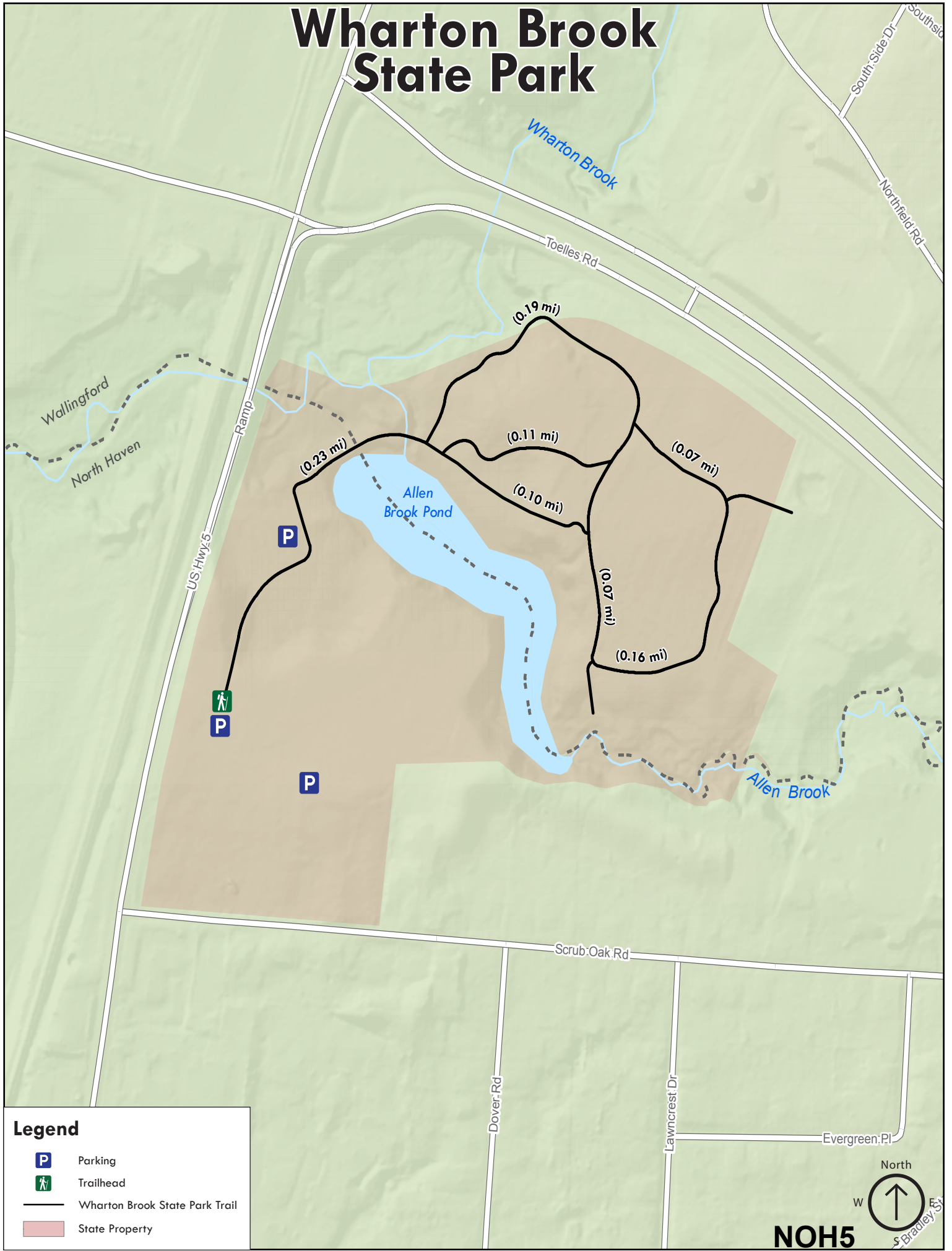


For more information about this location, contact:

DEEP State Parks Division
(860) 424-3200
deep.stateparks@ct.gov




Wharton Brook State Park



Legend

-  Parking
-  Trailhead
-  Wharton Brook State Park Trail
-  State Property

North
W  E
Spradley St

NOH5

Quinnipiac River State Park

HISTORY...

Quinnipiac River State Park (QRSP) was created in 1948 from surplus land acquired for the construction of the Wilbur Cross Parkway. The 1920's saw a summertime recreational and riverside community established which eventually became year round homes. As a result of surrounding development, runoff to the river increased and flooding events became increasingly destructive and more frequent. In the mid-1970's the State bought the property and removed the homes. The QRSP is comprised of approximately 300 acres of land from Banton Street in the south to Toelles Road in the north.

TODAY...

The North Haven Trail Association (NHTA) has taken on the responsibility of maintaining the trail system which currently consists of a 1 mile section of dirt trail and a 1/2 mile section of paved roadway. Future plans would be to connect to the Wallingford trail at Toelles Road. NHTA has sponsored events throughout the seasons to view the bird population and marsh marigolds for example. Kayaks/canoes can enter the river at the Park entrance. The permitted hunting season is posted on the kiosk also located at the park entrance. Ample parking is available. NHTA information can be obtained on Facebook or at www.NorthHavenTrails.org.



Photo by Don Rocklin

Trail Description:

Easy to Moderate Hike

Today Quinnipiac River State Park is accessible for hikers and walkers. The 300 plus acres of forested floodplain embrace nearly six serpentine miles of the Quinnipiac River's meandering western shoreline. The park's combination of habitat, location, water availability and forest cover come together to form remarkable wildlife habitat.

Total trails distance is approx. 1.69 miles

Directions and Parking:

The Quinnipiac State Park Trail is accessed off Banton Street off State Street via Bishop Street (Route 22).

Permitted/Prohibited Activities:

The Quinnipiac State Park allows canoeing and kayaking and hunting with a state-permit. Leashed pets are allowed, please dispose of any animal waste properly.



Photo by Don Rocklin

Total Trails Length: *Approx. 1.69 miles*

Orange (Banton Quinnipiac Trail): 0.97 miles. Easy to Moderate Hike

Black (Paved Roadway): 0.46 miles. Easy to Moderate Hike

Orange/Black (Banton Quinnipiac Trail/Paved Roadway): 0.11 miles. Easy to Moderate Hike



For more information about this location, contact:

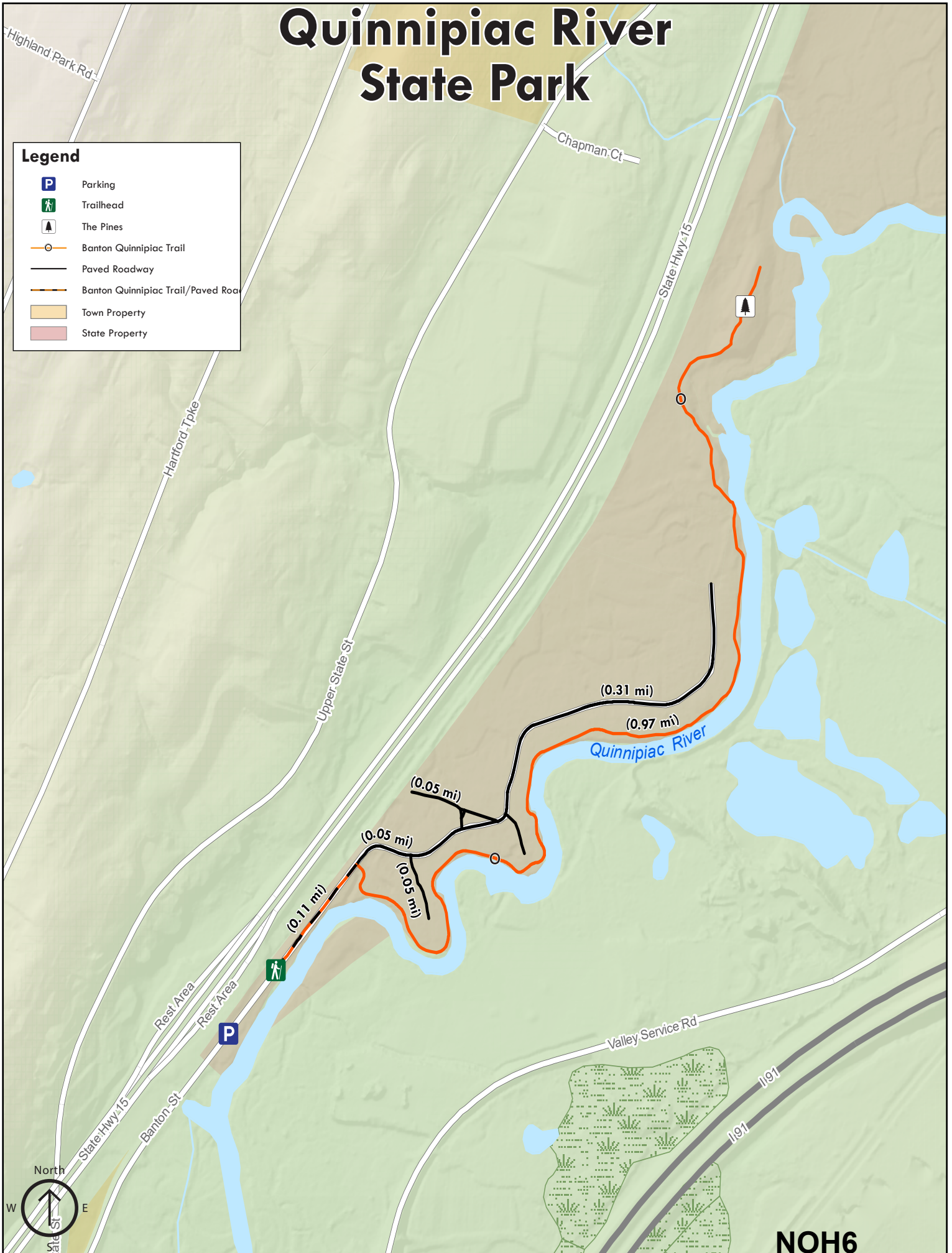
North Haven Trails Association
info@NorthHavenTrails.org
www.northhaventrails.org
DEEP State Park Division
(860) 424-3200



Quinnipiac River State Park

Legend

-  Parking
-  Trailhead
-  The Pines
-  Banton Quinnipiac Trail
-  Paved Roadway
-  Banton Quinnipiac Trail/Paved Road
-  Town Property
-  State Property



NOH6