

Town of Orange, CT Recreational Trails

OR1: Ewen Preserve

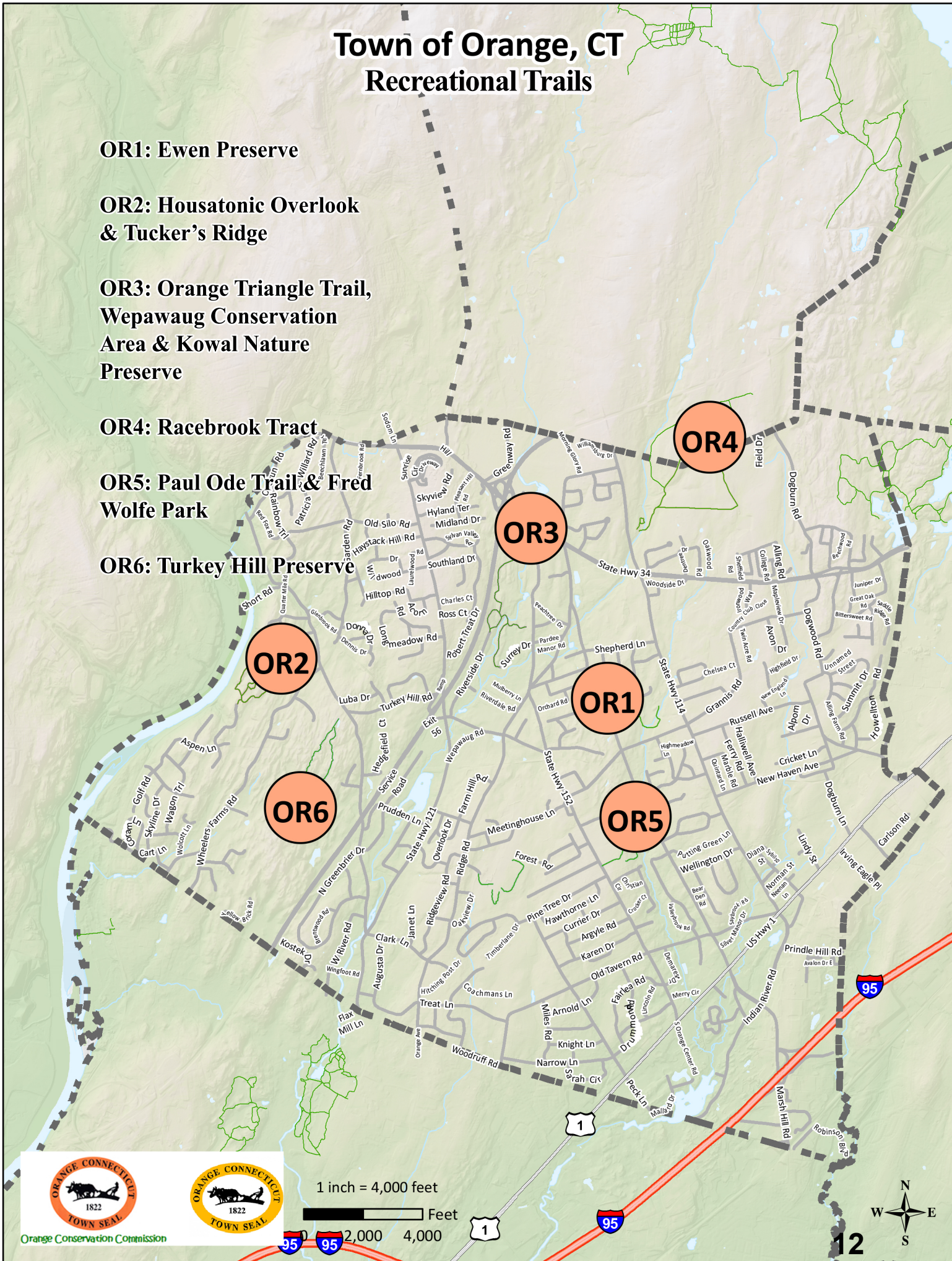
**OR2: Housatonic Overlook
& Tucker's Ridge**

**OR3: Orange Triangle Trail,
Wepawaug Conservation
Area & Kowal Nature
Preserve**

OR4: Racebrook Tract

**OR5: Paul Ode Trail & Fred
Wolfe Park**

OR6: Turkey Hill Preserve



1 inch = 4,000 feet

0 2,000 4,000 Feet



12

Ewen Preserve

The pastoral site represents Orange's farming heritage. Part of a farm owned by the same family since 1820, these 43 acres include old deep woods, meadows, ponds, wetlands, and fields that attract migrating birds.



Photo by Orange Conservation Commission

The trail around Ewen Farm Preserve is a scenic walk around the former hay fields. There are places that the trail crosses wet areas so be sure to wear shoes that can get muddy. There is another section of trail that goes into the woods as well. However, this spur ends at the end of the property and hikers should return the way they came.



Photo by Orange Conservation Commission

Trail Description:

Easy Walk

The trail at Ewen Preserve loops around a meadow and a small pond. It is an easy walk. The meadow is apt to get wet so shoes that can get wet are recommended.

Total trail distance is approx. 0.87 miles

Directions and Parking:

From the Wilbur Cross Parkway (Route 15): take exit 58 onto Route 34. Head east on route 34 until it intersects with Racebrook Road (Route 114). Turn right onto route 114 past the Racebrook Country Club and continue until turning right onto Shepherd Lane. St John's Drive will be on the left in about .1 miles, turn onto the Drive. Parking will be on the side of the road at the end of St. John's Dr.

Permitted/Prohibited Activities:

Permitted activities include hiking and pets are allowed on leash. Please pick up all animal waste.



Photo by Orange Conservation Commission

Total Trails Length: Approx. 0.83 miles



Orange Conservation Commission

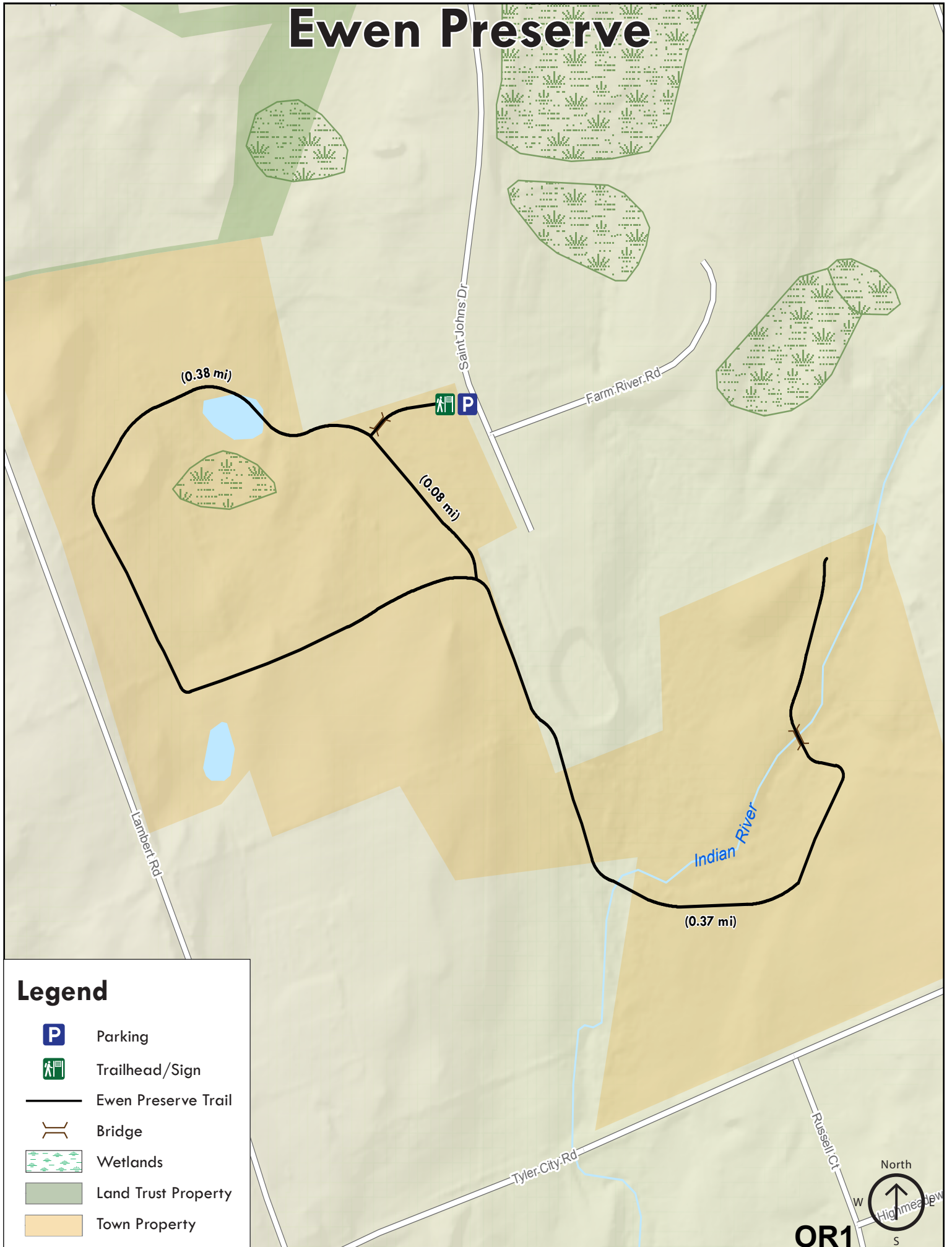
For more information about this location, contact:

Orange Conservation Commission
(203) 891-4768

www.orangetconservationcommission.com/



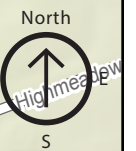
Ewen Preserve



Legend

-  Parking
-  Trailhead/Sign
-  Ewen Preserve Trail
-  Bridge
-  Wetlands
-  Land Trust Property
-  Town Property

OR1



Housatonic Overlook & Tucker's Ridge

The trails along Tucker's Ridge, between the Tenneco Pipeline and the precipitous 200-foot eastern palisade, overlook the Housatonic River with the Town of Shelton directly to the west and Two Mile Island and Derby to the north. With its commanding view of the Housatonic River, one can visualize Indian sentries keeping a watch for approaching enemy canoes from lookouts along this ridge.

During the winter bald eagles can frequently be seen soaring over the water or sitting in trees on either side of the river. The trail provides various views of the Housatonic as one travels south along Tucker's Ridge. Just before the trail merges with the pipeline easement, there are some good views of the Housatonic in the southerly direction.

The trail now becomes quite steep descending bedrock before crossing a small stream, draining the northern wetland area, and then climbing up to the level inland trails through a forest with an under story of Mountain Laurel punctuated by picturesque rock outcroppings.

There is a large wetland in the northern section and portions of the trail may be muddy during wet periods, but the deer tracks usually make up for the inconvenience. These trails have been used by local residents for years. The site was acquired by the Town of Orange in 2001. The deed describes the eastern boundary as an Old Highway. It is bounded on both sides by stone walls. The western wall is the Housatonic Overlook boundary line. Part of the eastern section of the trail actually travels outside the Overlook on this old stage coach road.



Photo from Orange Line

Trail Description:

Easy Hike

Designated as the State Flower by the General Assembly in 1907, the Mountain Laurel (*Kalmia latifolia*) is perhaps the most beautiful of native American shrubs. Its fragrance and the massed richness of its white and pink blossoms so vividly contrast with the darker colors of the forests and the fields that they have continually attracted the attention of travelers since the earliest days of our colonization. In June the Mountain Laurel is magnificent.

Total trails distance is approx. 1.7 miles

Directions and Parking:

The scenic part of the trail is best accessed via the northerly parking area at the end of High Ridge Road. Take the Wilbur Cross Parkway to Exit 55 and follow Wheeler's Farm Road north to Derby-Milford Road. Take a left and then another left onto High Ridge Road. The southerly parking area at the end of Cedar Grove Street leads directly to the fairly level inland trails. From Wheeler's Farm Road, take Herbert Street to Wolcott Lane, left on Windy Hill, right on Wagon Trail, right on Broadview Road, a right on Aspen Lane, and a left on Cedar Grove Street.

Permitted/Prohibited Activities:

This property is for passive use only. Hiking all-year round with snow-shoeing or cross-country skiing during winter months. Dogs are permitted on leash. Please bag and remove any dog waste.



Photo Provided by OCC

Total Trails Length: Approx. 1.7 miles

Blue Trail: 0.45 miles. Easy Hike

Red Trail: 1.15 miles. Easy Hike

Yellow Trail: 0.16 miles. Easy Hike

Green Trail: 0.13 miles. Easy Hike

White Trail: 0.07 miles. Easy Hike



Orange Conservation Commission

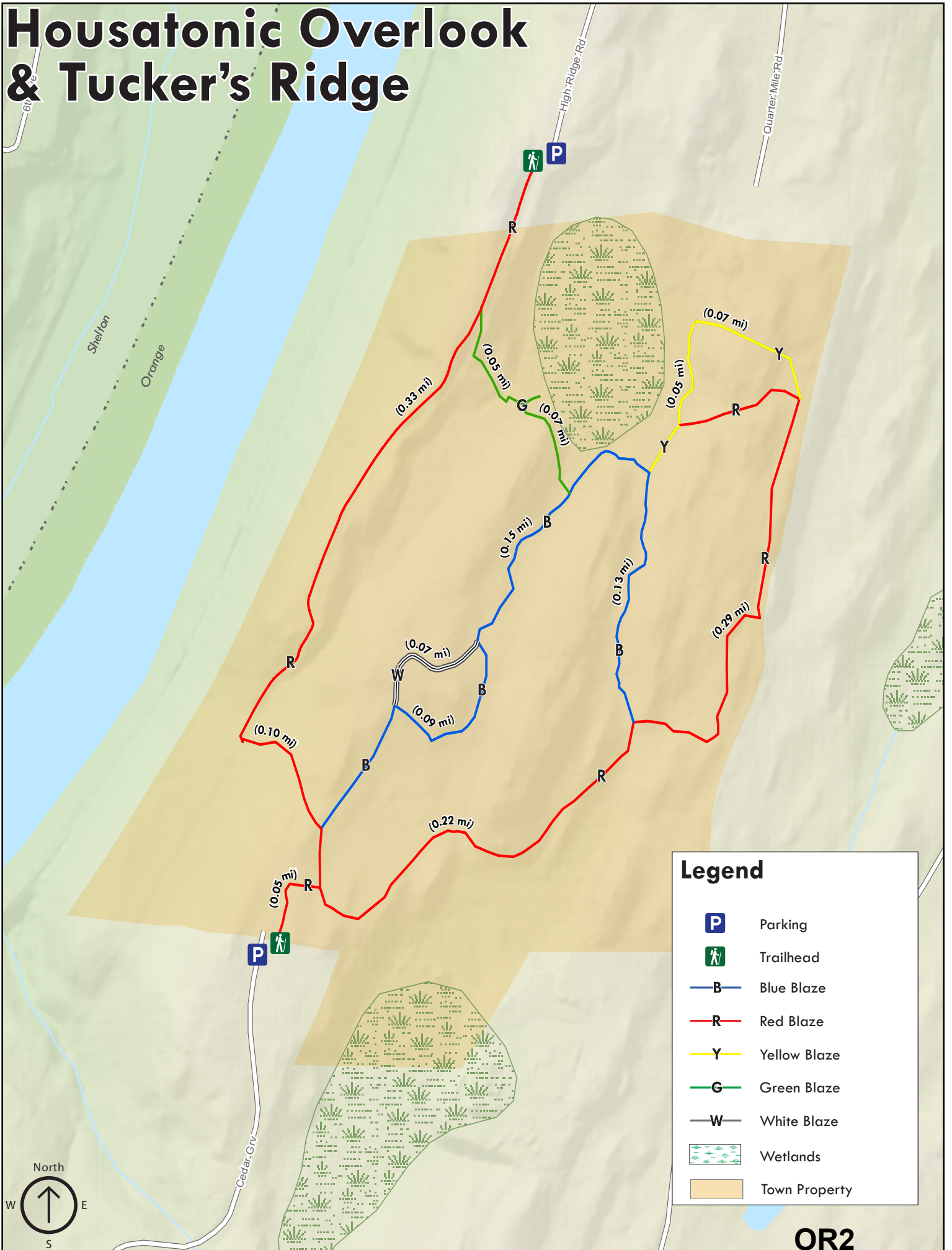
For more information about this location, contact:

Orange Conservation Commission
(203) 891-4768

www.orangectconservationcommission.com/



Housatonic Overlook & Tucker's Ridge



Legend	
	Parking
	Trailhead
	Blue Blaze
	Red Blaze
	Yellow Blaze
	Green Blaze
	White Blaze
	Wetlands
	Town Property

OR2

Orange Triangle Trail, Wepawaug Conservation Area & Kowal Nature Preserve

A variety of trails traverse this area linking land owned by the Orange Land Trust, the Town of Orange and Camp Cedarcrest. The Triangle Trail follows the course of the Wepawaug River and connects Kowal Nature Preserve, the Wepawaug Conservation Area, the Whitney Tract and the Ravine. The best access is from the Conservation Area parking lot off Mapledale Road between Orange Center Road and Derby Road (Route 34). There also is a very small parking area just south of Derby Road near the Ravine.

The orange trail goes through a majestic hemlock forest to a bridge over the Wepawaug River. Just before the bridge, a left turn leads to the red trail leading to the Kowal Nature Preserve. Continuing on the Orange Triangle trail across the bridge leads to the blue and yellow trails that include quiet forested areas, a vernal pool and frequent wildlife sightings. The Orange Triangle Trail leads through Camp Cedarcrest (private) and winds over rocky and treed knolls and through a relatively young forest.

At the Whitney Tract there is another hemlock forest before the trail crosses over into the Ravine, with dramatic rock outcroppings creating stunning white water rapids and falls. On the east bank of the river is the remains of the foundation of a old mill that manufactured cloth for Union uniforms during the Civil War.

You can return to the parking lot by reversing your route along the trail of walking back along Mapledale Road.



Photo by Sarah, RED-Living

Trail Description:

Easy Hike

These trails can be hiked separately or together. They take the hiker through scenic woods with views of vernal pools and historic sites.

Total trails distance is approx. 1.65 miles

Directions and Parking:

The Wepawaug Conservation Area parking lot is located on Mapledale Road which can be accessed either via Derby Road (Route 34) or Orange Center Road (Route 152). Both roads can be reached via the Wilbur Cross Parkway. Limited street parking is also available on Green Circle off Derby Road (34), at the end of Riverside Drive, or at the end of Surrey Drive.

Permitted/Prohibited Activities:

This property is for passive use only. No wheeled vehicles are permitted. No picnicking is available. The trail is for hiking only. During the summer season when Camp Cedarcrest is in session, please do not disrupt camp activities. Dogs are permitted on leash. Please bag and remove any dog waste.



Photo Provided by OCC

Total Trails Length: Approx. 1.65 miles

Yellow Trail: 0.19 miles. Easy Hike

Red Trail: 0.33 miles. Easy Hike

Orange (Orange Triangle Trail): 0.96 miles. Easy Hike

Blue Trail: 0.12 miles. Easy Hike



Orange Conservation Commission

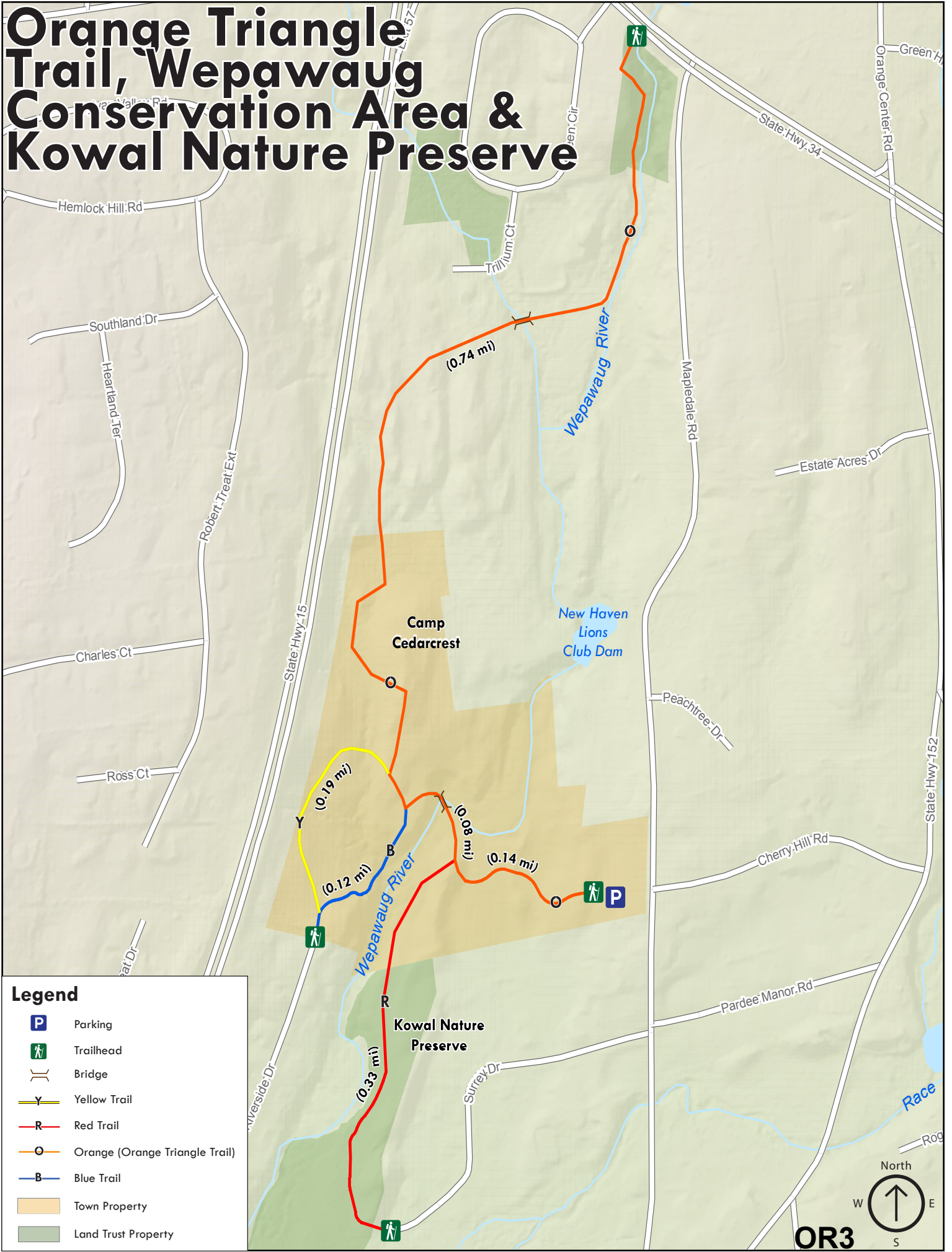
For more information about this location, contact:

Orange Conservation Commission
(203) 891-4768








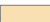

www.orangetconservationcommission.com/

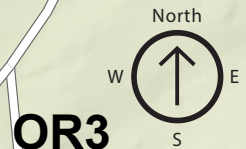


Orange Triangle Trail, Wepawaug Conservation Area & Kowal Nature Preserve



Legend

-  Parking
-  Trailhead
-  Bridge
-  Yellow Trail
-  Red Trail
-  Orange (Orange Triangle Trail)
-  Blue Trail
-  Town Property
-  Land Trust Property



Racebrook Tract

The Racebrook Tract encompasses 230 acres in Orange and 181 acres in Woodbridge. The Tract was purchased from two farmers, Asa Alling and Sylvester Colburn, by the New Haven Water Company early in the 20th century. The stone walls which crisscross the Tract are the original farm fences. The management of this forest was put under the direction of the Yale School of Forestry early in the 20th century and continued until the early 1950's when water company foresters took over. This was one of the first professionally managed forests in the country.

Because of its large size and its proximity to open space all the way to the Maltby Lakes, this is a marvelous wildlife area. The varied habitats: stream belts, forests, wetlands, meadows, and brush make this attractive to a variety of animals and songbirds. Many species of reptiles and amphibians find the habitat to their liking and even avian predators such as the Great-horned Owl can occasionally be seen.

Four blazed trails meander across fairly level land, passing through mixed hardwoods and impressive stands of white pines. Wetlands along Race Brook offer year-round birdwatching. Near the entrance to the red trail is the Orange Arboretum that features indigenous flowering species and a variety of existing red and white oak, pine oak, large, white and Norway spruce and birch trees. Each tree has a marker plate with its Latin and common names.

A handicapped accessible trail leads from the northeast corner of the parking area. The paved asphalt trail slopes to a boardwalk that makes a loop over the wetlands within the brook's floodplain. The large graded parking area is accessed in Orange from Racebrook Road just north of Derby Avenue (Route 34).



Photo Provided by OCC

Trail Description:

Easy Hike

One of the largest open space sites is the Racebrook Tract with 230 acres in Orange and 181 acres in Woodbridge. Four blazed trails meander across fairly level land, passing through mixed hardwoods and impressive stands of white pines. A handicapped accessible trail leads from the northeast corner of the parking area. The paved asphalt trail slopes to a boardwalk that makes a loop over the wetlands within the brook's floodplain.

Total trails distance is approx. 3.61 miles

Directions and Parking:

The Racebrook Tract parking area is located just off Racebrook Road (Route 114) in Orange just north of Derby Avenue (Route 34). Route 34 can be accessed via the Wilbur Cross Parkway. Off-street parking is available off Racebrook Road just north of Derby Avenue.

Permitted/Prohibited Activities:

Permitted activities include hiking, cross country skiing, bicycling, horse back riding and fishing in Race Brook and Colburn Brook. Special rules for the latter two activities are posted in the kiosk near the trail entrance. Dogs must be leashed. Please bag and remove any dog waste. Motorized vehicles are prohibited. Mountain biking off trail is prohibited.



Photo Provided by OCC

Total Trails Length: Approx. 3.61 miles

Red Trail: 1.26 miles. Easy Hike

Purple Trail: 0.74 miles. Easy Hike

Green Trail: 0.55 miles. Easy Hike

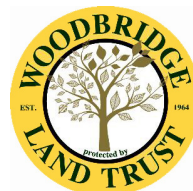
White Trail: 0.52 miles. Easy Hike

Unblazed Trails: 0.38 miles. Easy Hike

Brown (Nature Trail): 0.16 Easy Hike



Orange Conservation Commission



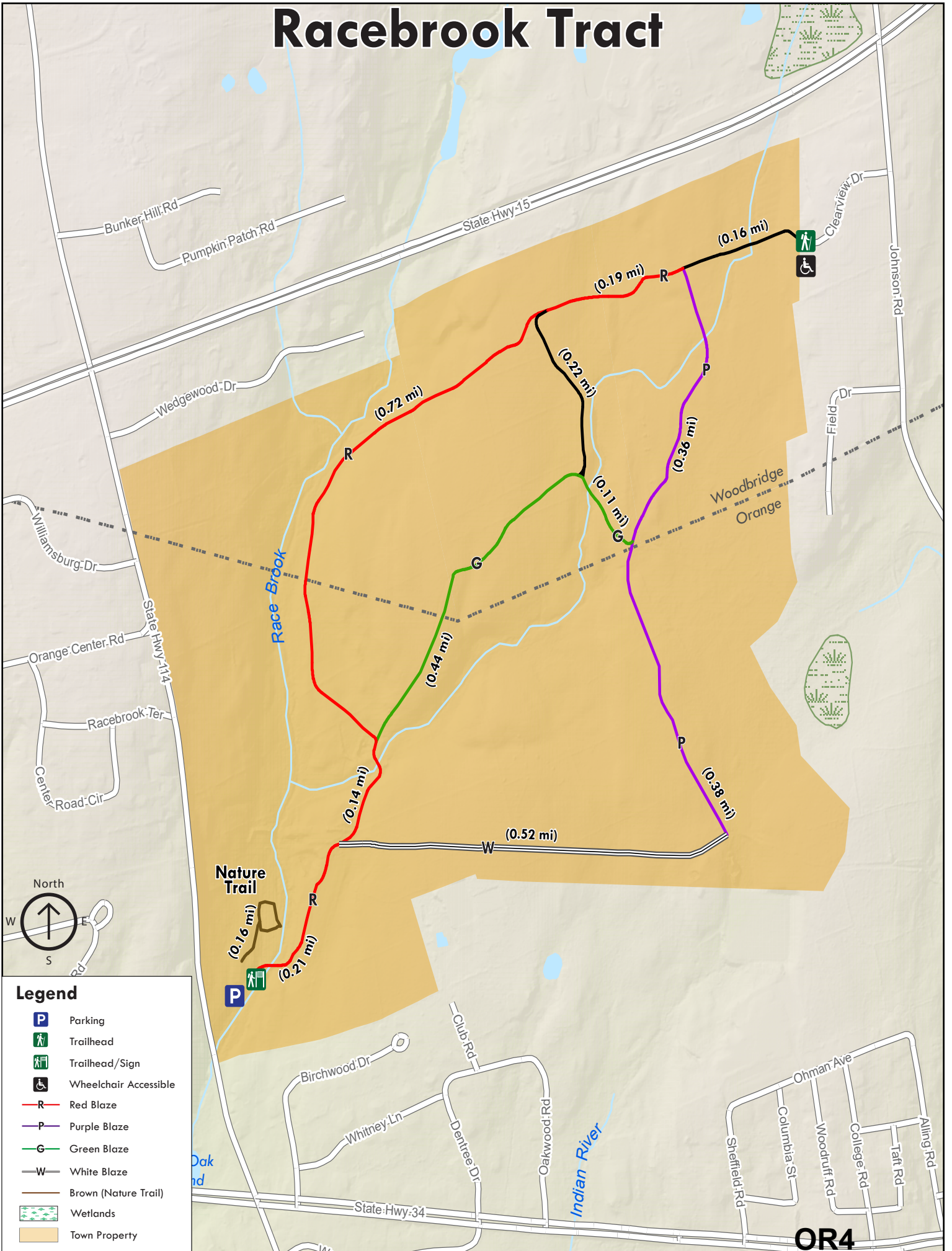
For more information about this location, contact:

Orange Conservation Commission
(203) 891-4768

www.orangetconservationcommission.com/



Racebrook Tract



Paul Ode Trail & Fred Wolfe Park

The Paul Ode Trail is named for Paul Ode who, as Chairman of the Conservation Commission, was responsible for organizing the development of this trail behind the High Plains Community Center.

The orange trail starts behind the Rotary Cuzzocreo Memorial Pavillion and drops steeply to the Indian River through a mixed hardwood and hemlock forest. Near the bottom it bears left and returns to the pavilion up the exit to Lambert Road. The white trail continues down to the Indian River, across a small stream and then up under the overhead lines across the power right-of-way. It then continues up through mixed hardwoods to several large sycamore trees which define the portal to the open field south of High Plains, and thence back to the Pavilion. The length of the trail is approximately 2/3 of a mile. A trail guide is available. There is a stone-dust, level walking track 4/10 mile long to the north of the Community Center, around the Country Fair Grounds.

Fred Wolfe Park, named for a man who spent many years in public service in the Town of Orange, is an example of an old farm which was not maintained. For approximately 25 years, it was held by the school district as a possible building site. Soon after acquisition by the Town, four soccer fields were built close to the parking area.

The trail begins at the end of the parking lot straight across the end of a soccer field to the green sign.

The trail is through a mixture of immature growth and mixed hardwoods. The trail heads in a northerly direction and emerges into a field cultivated by a local farmer. A stone spear point was found here soon after the Town purchased the area in 1996. The trail follows along the edge of the field and then turns left to return to the parking lot around the soccer fields.



Soccer Field at Fred Wolfe Park
Photo by Emmeline Alaconis, SCRCOG

Trail Description:

Easy Hikes

The Paul Ode is a scenic hike through the forest behind the community center. It runs along the Indian River and has a picnic area. The trail at Fred Wolfe park is a nice hike through the woods around four soccer fields.

Fred Wolfe Park: total trail distance is approx. 0.53 miles

Paul Ode Trail: total trail distance is approx. 0.64 miles

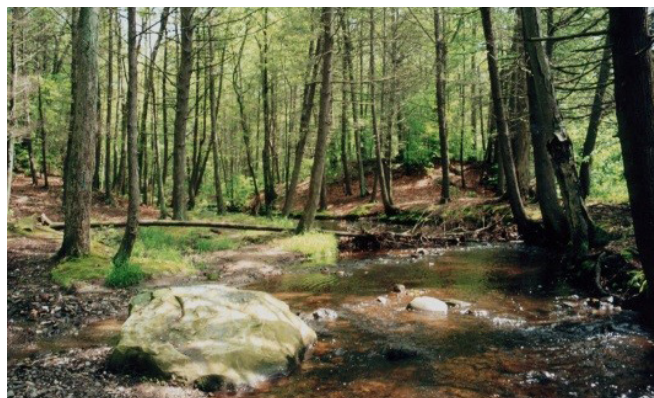
Directions and Parking:

The Paul Ode Nature Trail is located at the rear of the High Plains Community Center off Orange Center Road (Route 152). Ample parking is available.

The trail at the Fred Wolfe Park is accessed off Ridge Road to Hollow Road with parking at the end of Hollow Road. Please note that this road is not plowed in the winter months.

Permitted/Prohibited Activities:

Biking is prohibited in both locations. Dogs are permitted on leash. Dog waste stations are located in various locations at the High Plains Community Center. Please bag and pick up all dog waste.



Indian River near Paul Ode Trail

Photo Provided by OCC

Paul Ode Trail: Total Trail Length: Approx. 0.64 miles.
Easy Hike

Fred Wolfe Park: Total Trail Length: Approx. 0.53 miles.
Easy Hike



Orange Conservation Commission

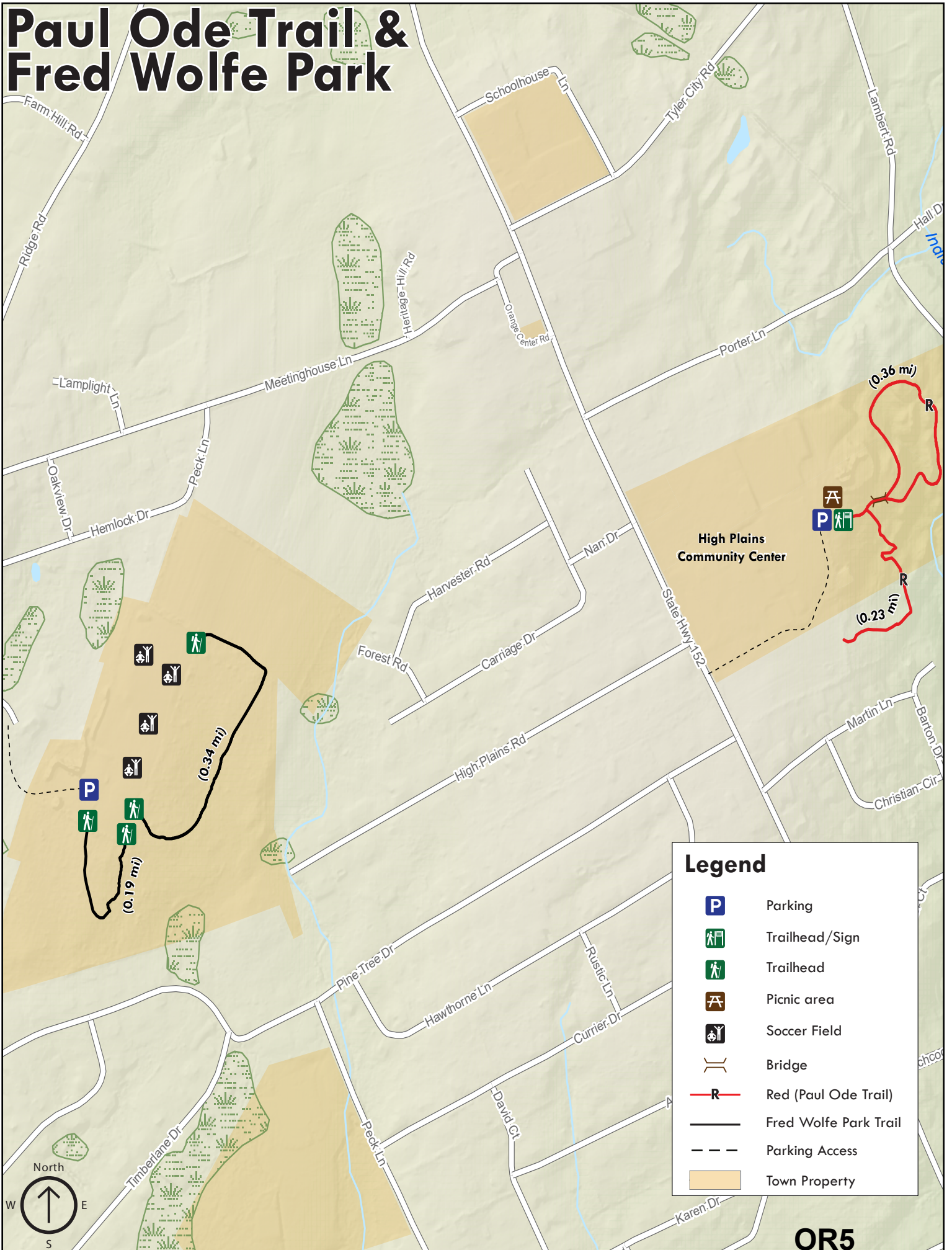
For more information about this location, contact:

Orange Conservation Commission
(203) 891-4768

www.orangectconservationcommission.com/



Paul Ode Trail & Fred Wolfe Park



Legend

- Parking
- Trailhead/Sign
- Trailhead
- Picnic area
- Soccer Field
- Bridge
- Red (Paul Ode Trail)
- Fred Wolfe Park Trail
- Parking Access
- Town Property

Turkey Hill Preserve

Seasonal pools, rocky talus slopes, spring fed headwater streams, mixed hardwoods, stands of Eastern Hemlock, old field habitat and a small spring fed pond are all found in the Turkey Hill Preserve (THP). The 376 acre preserve is located in the Housatonic River Valley, a migratory corridor of ecological importance. The preserve is the largest continuous open space area in the Town of Orange.

The land was purchased in 2012 from the Hubbell Corporation. Although the THP is heavily wooded today, it was not always that way. In the past it was owned by AZGROW, a seed growing company, various family farming operations, including the present pasture located at the entrance to the Preserve.

Interestingly the preserve still has many secrets. It was used unofficially during the 1950's-1960's by individuals needing a quiet (and potentially secret) place to build a cabin. There are the remains of an old one room house foundation along the eastern portion of the blue trail. The chimney was standing by itself until about 2008 when it eventually collapsed. Throughout the property are other structures that are remnants of the past usage.

The forested area has one trail, the blue trail, starting at the parking lot and loops around through the center of the property. The preserve is home to many species of song birds, owls and other raptors. It has an abundance of deer and wild turkey. You also may happen upon coyote paw prints and occasionally bobcat. Threatened species of turtle and amphibians also are likely to call the forest home.

The preserve has very special features to offer everyone from the professional scientist to children who love to explore.



Photo from Orange Live

Trail Description:

Easy Hike

The largest open space site in Orange, these 376 acres will offer the most varied experiences for the visitor. An old growth core forest is dotted with ledges, ridges, vernal pools, gorges, streams, ponds, shallow waterways, and a 100-ft hill that is steep but hikeable. It is populated by a wide variety of plant life and wildlife.

Total trail distance is approx. 1.61 miles

Directions and Parking:

From Route 15: Take exit 56 and turn left at the end of the exit ramp onto Grassy Hill Road (Route 121). Turn left onto Cranberry Lane after the bridge over Route 15. Almost immediately take a right onto Turkey Hill Road. Follow Turkey Hill Rd all the way to the end. The entrance to the Preserve will be across from the end of Turkey Hill Road and parking is within the preserve. The GPS address is 700 Derby-Milford Road.

Permitted/Prohibited Activities:

This area is for passive recreation only. No motorized vehicles. Pets are welcome but must be leashed. Please pick up all pet waste.



Photo Provided by OCC

Total Trails Length: Approx. 1.61 miles



Orange Conservation Commission

For more information about this location, contact:

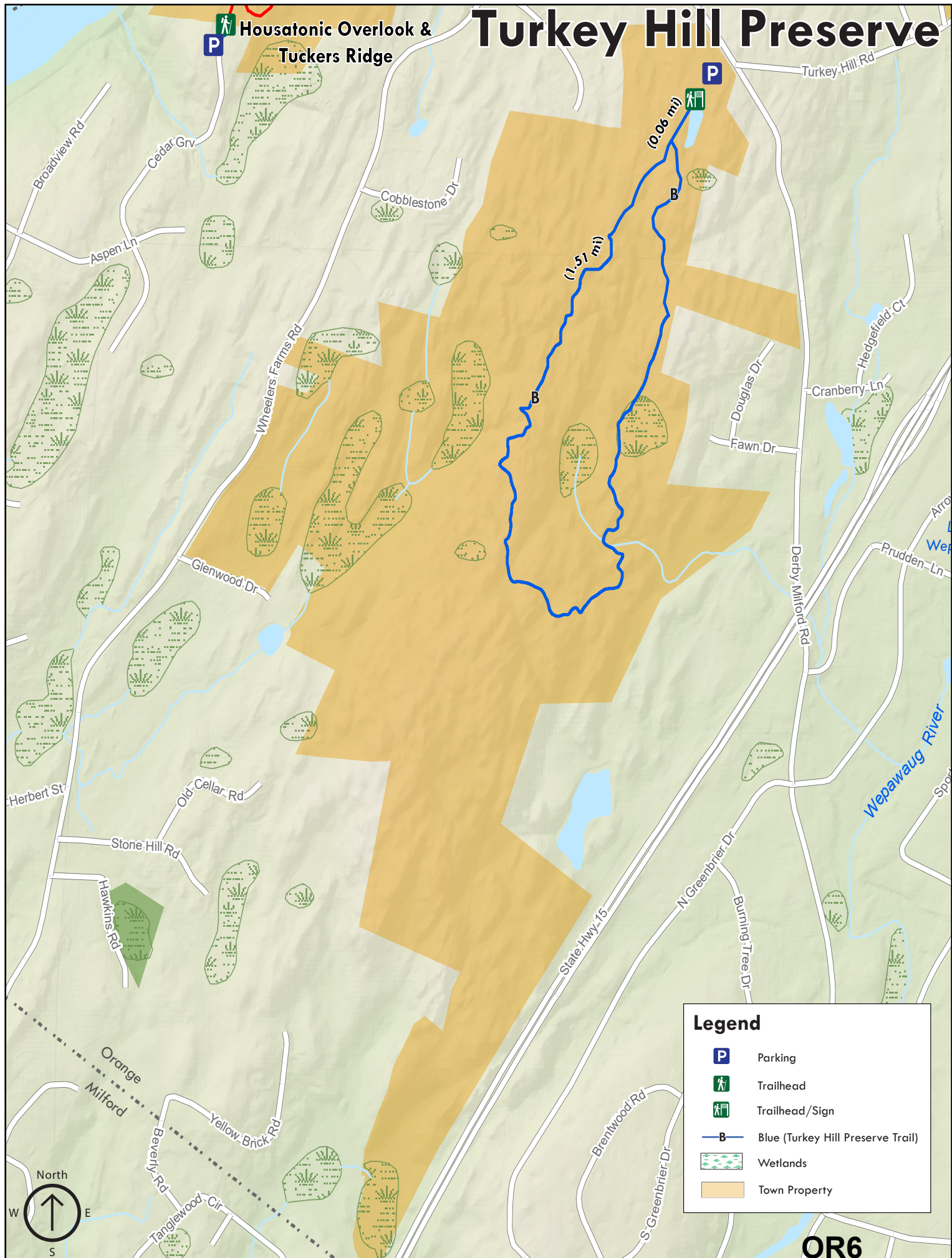
Orange Conservation Commission
(203) 891-4768

www.orangectconservationcommission.com/



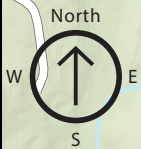
Turkey Hill Preserve

Housatonic Overlook & Tuckers Ridge



Legend

- Parking
- Wetlands
- Trailhead
- Trailhead/Sign
- Blue (Turkey Hill Preserve Trail)
- Town Property



OR6