

An interpretive trail guide is available from RWA's Recreation Department that matches the numbered disks posted on the trees along the trail. The Pine Hill System has four trails.

The Peat Swamp Spur Trail (white triangle) is 0.3 miles and connects to the Peat Swamp Loop from the parking lot off Rimmon Road (Route 313). You will pass an old Christmas tree plantation on your right as you enter. The plantation contains white spruce, blue spruce and black spruce. It is a good spot for observing birds, as the blueberry bushes at the far end provide food for many species. There is a brook which runs under the bridge on your way to the main trail loop.

The Peat Swamp Loop (white rectangle) is 2.0 miles. Access the main loop by taking the Peat Swamp Spur Trail from the parking area on Rimmon Road (Route 313), or choose the longer route by parking at the end of Hemlock Hollow Road and taking the Hemlock Hollow Loop. Either way, you will have the opportunity to explore previous land use and a variety of forest types along the trail. In the early 1900's most of the land was cleared for agriculture. The trails you will be walking on were probably old farm roads. There are a number of stone walls that hint at previous farm land use. Our guided trail booklet can assist you in identifying specific tree species and pointing out areas that show previous land use. Other features you will see along this trail include streams and vernal pools; you will be able to catch a glimpse of Peat Swamp Reservoir from the northwest leg of the trail, especially in the winter and early spring. Notice the rocky outcrops and be on the lookout for erratic boulders (large rocks deposited by receding glaciers that do not match the underlying bedrock type).

The Hemlock Hollow Loop (red circle) is 1.0 miles. Access this trail by parking at the end of Hemlock Hollow Road and taking the short Hemlock Hollow Spur trail right to the loop. You will cross several small streams and walk through varied hardwood tree stands, including sugar maple, sassafras, tulip tree, and oak. You will see more rocky outcrops, erratic boulders and many stone walls along the way.

The Hemlock Hollow Spur (green triangle) is 0.1 miles and is a very short spur trail that connects you from the trailhead off Hemlock Hollow Road to the Hemlock Hollow Loop trail.

### Directions and Parking:

The Pine Hill Trail System is reached off of Rimmon Road (Route 313). Trail parking is an entrance/driveway off Route 313 with a small parking area on the left.

\*There is a home occupied by a tenant and we ask that trail users respect the privacy of the occupants.

### Permitted/Prohibited Activities:

This site is for passive use and hiking only. All motorized vehicles are prohibited. Wading, swimming, biking and horseback riding are prohibited. Dogs are not permitted.



Hiking



Cross country Skiing

### For more information about this walk and to obtain a permit, contact:

Regional Water Authority  
Recreation Department  
(203) 401-2654

<http://www.rwater.com/products-and-services/recreation/>

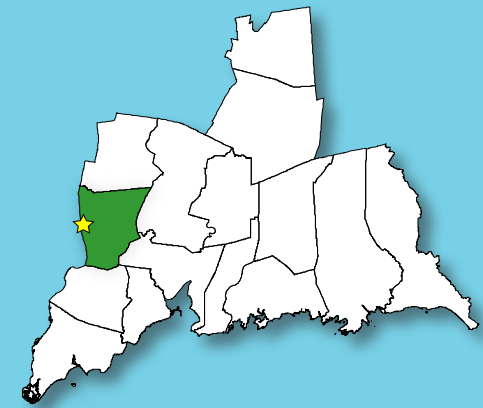
Questions regarding this brochure can be addressed to  
South Central Regional Council of Governments  
Phone: (203) 234-7555/Fax: (203) 234-9850  
E-mail: [trails@scrcog.org](mailto:trails@scrcog.org)

Scan QR Code to access the South Central Regional Council of Governments Recreational Trails Webpage



# Recreational Trails South Central Connecticut Pine Hill Trails

## Regional Water Authority Permit Required



## Woodbridge, CT

# Pine Hill Trails

Regional Water Authority  
Permit Required



Photo by Emmeline Harrigan





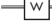


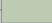
## Trail Description:

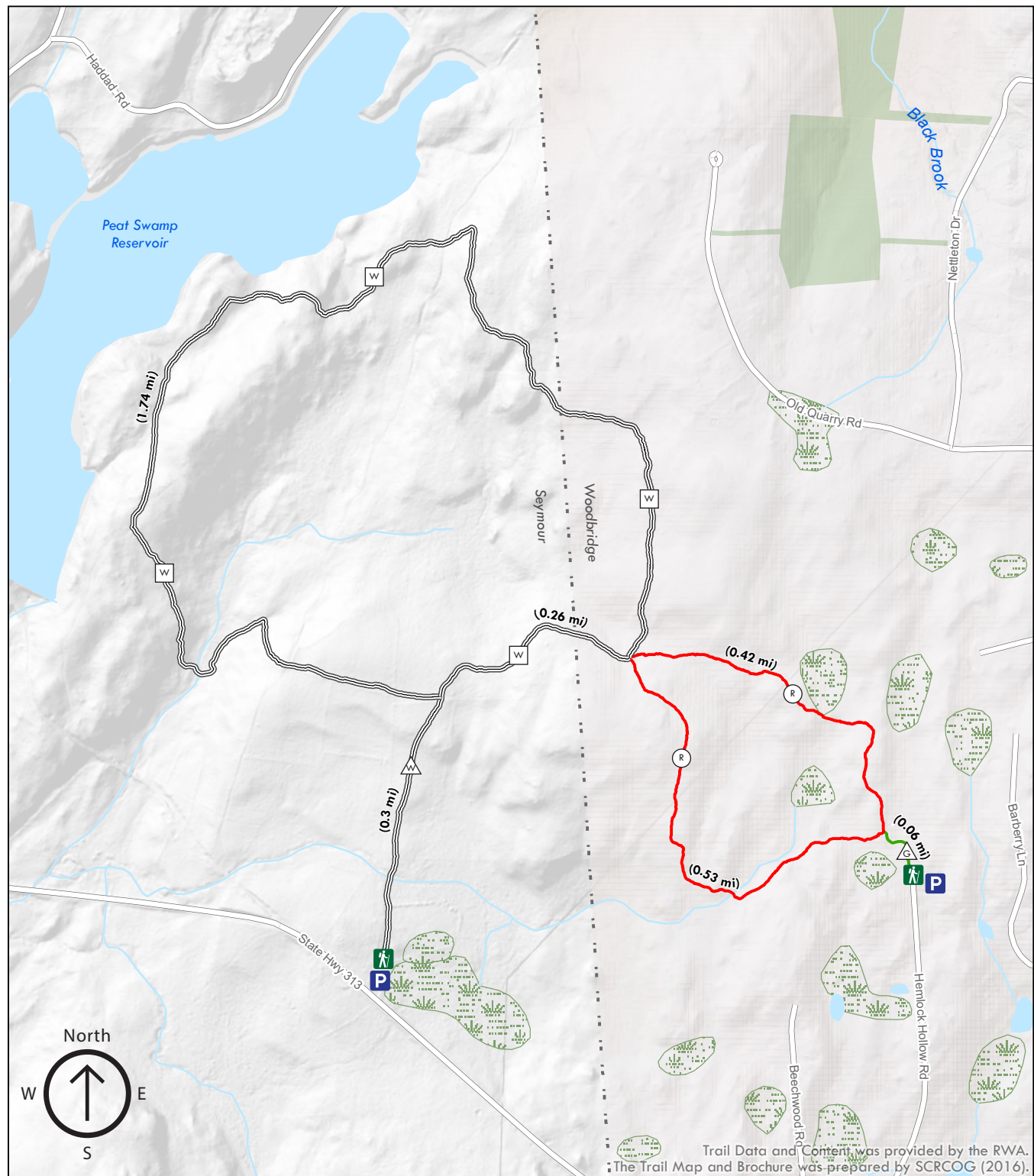
### Easy Hike

Hike, jog or cross country ski the Regional Water Authority's Pine Hill Trail System. You will find varied terrain and features: Seasonally wet to rocky and steep to relatively flat. You will traverse through mixed aged forests ranging from wetland species to dry ridge species. There is evidence of past agricultural use and timber and fuel harvesting.

Total trails length is approx. 3.31 miles

## Legend

-  Parking
-  Trailhead
-  Green (Hemlock Hollow Spur)
-  Red (Hemlock Hollow Loop)
-  White (Peat Swamp Loop)
-  White (Peat Swamp Spur)
-  Wetlands
-  Land Trust Property



Trail Data and Content was provided by the RWA.  
The Trail Map and Brochure was prepared by SCRCOG (2016).