

Wallingford's newest park is the Quinnipiac River Linear Trail. This 1.25+ mile multi-use trail (2.5 miles to return to parking area) is predominantly paved with some gravel areas where trail construction is still pending. The first two stages of the trail construction that have been completed include a one-mile paved walking, biking, and skating trail that runs from Community Lake through picturesque areas to the Quinnipiac River and then extends through a tunnel under the Wilbur Cross Parkway.

The trail begins adjacent to the parking area with a trail map display showing both the completed trail and proposed extensions. The trail then passes by the Community Lake on your right and goes around the park on your left. After a 1/4 mile the trail splits. Take the right junction to continue on the trail, as the left returns to the parking area.

A special feature of the park is the Labyrinth which will be on the right side of the trail. Labyrinths are a circular walking pattern used for meditation or reflection. Soon after, a stop by the Quinnipiac River provides benches for resting. A new iron bridge takes you over the river where you come to an intersection. The paved trail continues left through a tunnel underneath Route 15 and ends next to the river. When the pavement ends, a gravel trail leads to a few more benches overlooking the river where the trail ends. Return back along the trail to the parking area.

In this area of the river, large dams were used to power the local silver industry, forming impounded lakes like Hanover Pond (in Meriden) and Community Lake. The dam at Community Lake broke in 1979, and the woods and meadow you see here in the former lakebed support many new wildlife. Plans are underway to rebuild a smaller lower dam, to partly re-flood the area, and create new wetlands.

Directions and Parking:

Take the Wilbur Cross Parkway (Route 15) to Exit 65. Take North Turnpike Road (Route 150) as it curves southwards. The entrance to the Community Lake/Linear Trail parking lot will be on the left just after crossing over the Wilbur Cross Parkway. The trail begins next to the park entrance.

Permitted/Prohibited Activities:

Walking, biking, and skating are allowed along the trail. Canoeing is allowed in the Quinnipiac River. Dog are allowed on leash. Please bag and pick up all dog waste.



Hiking



Pets on Leash



Canoeing



Bicycling

For more information about this location, contact:

Town of Wallingford
Parks & Recreation Department
(203) 294-2120
parksrec@wallingfordct.gov

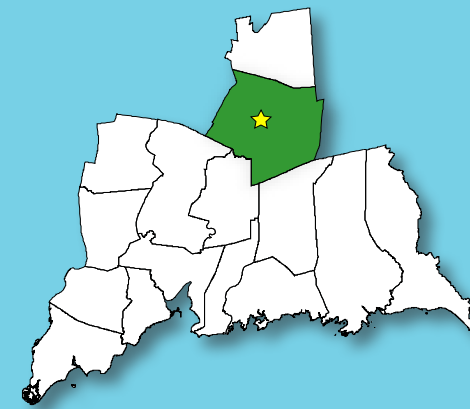
Questions regarding this brochure can be addressed to
South Central Regional Council of Governments
Phone: (203) 234-7555/Fax: (203) 234-9850
E-mail: trails@scrcog.org

Scan QR Code to access the South Central Regional Council of Governments Recreational Trails Webpage



Recreational Trails South Central Connecticut

Quinnipiac Linear Trail



Wallingford, CT

Quinnipiac Linear Trail



Photo by the Department of Environmental Protection





Trail Description:

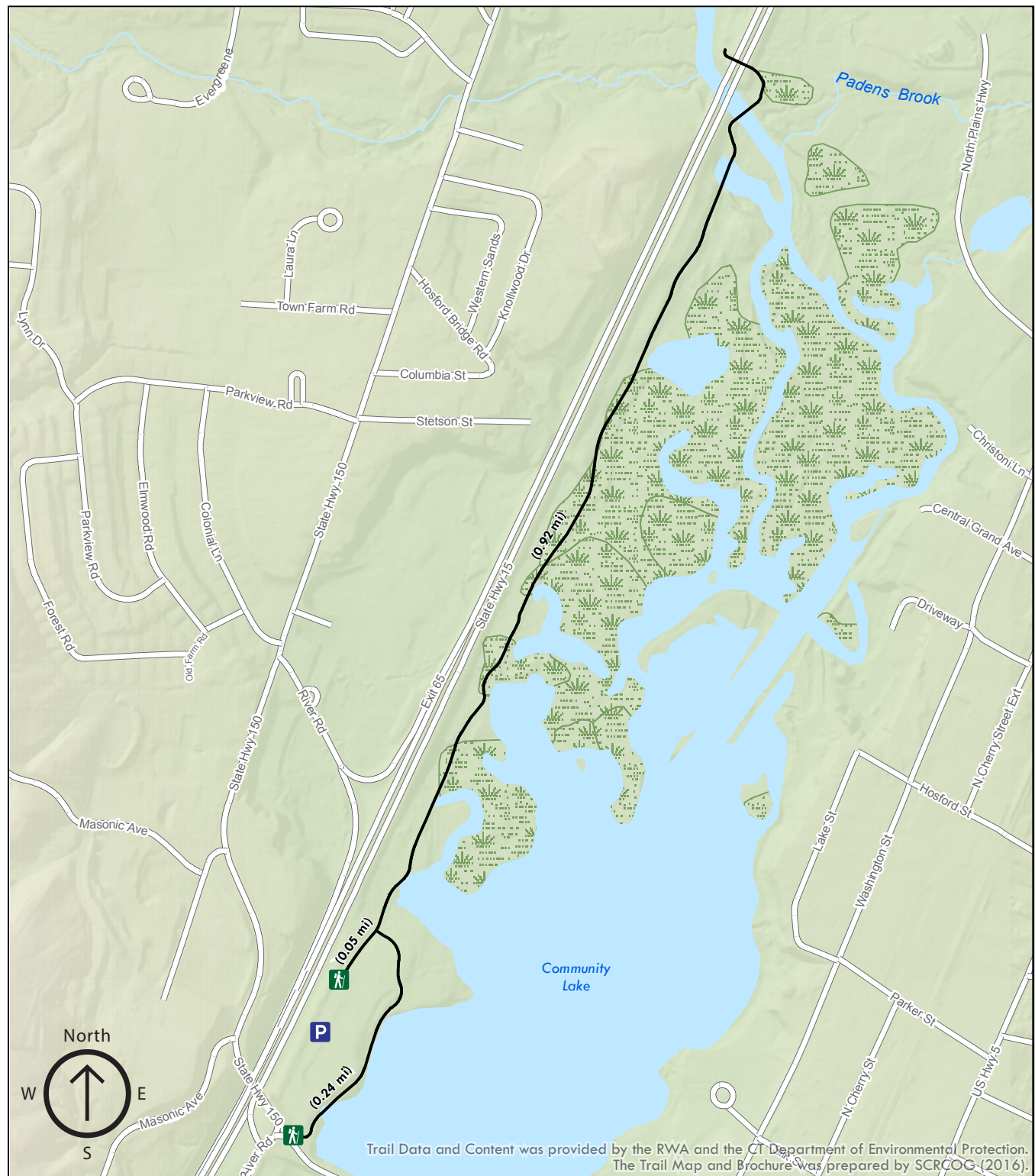
Easy Walk

The Quinnipiac River Linear Trail is a multiple-town project. The cross-town Wallingford portion of the trail will cover 6.7 miles from north to south. The park offers recreational access to all citizens - young and old, by foot, bike, skates, canoes, strollers, and wheelchairs.

Total trail distance is approx. 1.21 miles

Legend

-  Parking
-  Trailhead
-  Quinnipiac Linear Trail
-  Wetlands



Trail Data and Content was provided by the RWA and the CT Department of Environmental Protection. The Trail Map and Brochure was prepared by SCRCOG (2016).