

Seasonal pools, rocky talus slopes, spring fed headwater streams, mixed hardwoods, stands of Eastern Hemlock, old field habitat and a small spring fed pond are all found in the Turkey Hill Preserve (THP). The 376 acre preserve is located in the Housatonic River Valley, a migratory corridor of ecological importance. The preserve is the largest continuous open space area in the Town of Orange.

The land was purchased in 2012 from the Hubbell Corporation. Although the THP is heavily wooded today, it was not always that way. In the past it was owned by AZGROW, a seed growing company, various family farming operations, including the present pasture located at the entrance to the Preserve.

Interestingly the preserve still has many secrets. It was used unofficially during the 1950's-1960's by individuals needing a quiet (and potentially secret) place to build a cabin. There are the remains of an old one room house foundation along the eastern portion of the blue trail. The chimney was standing by itself until about 2008 when it eventually collapsed. Throughout the property are other structures that are remnants of the past usage.

The forested area has one trail, the blue trail, starting at the parking lot and loops around through the center of the property. The preserve is home to many species of song birds, owls and other raptors. It has an abundance of deer and wild turkey. You also may happen upon coyote paw prints and occasionally bobcat. Threatened species of turtle and amphibians also are likely to call the forest home.

The preserve has very special features to offer everyone from the professional scientist to children who love to explore.

### Directions and Parking:

From Route 15: Take exit 56 and turn left at the end of the exit ramp onto Grassy Hill Road (Route 121). Turn left onto Cranberry Lane after the bridge over Route 15. Almost immediately take a right onto Turkey Hill Road. Follow Turkey Hill Rd all the way to the end. The entrance to the Preserve will be across from the end of Turkey Hill Road and parking is within the preserve. The GPS address is 700 Derby-Milford Road.

### Permitted/Prohibited Activities:

This area is for passive recreation only. No motorized vehicles. Pets are welcome but must be leashed. Please pick up all pet waste.



Hiking



Pets on Leash

### For more information about this walk contact:

Orange Conservation Commission  
(203) 891-4768

<http://www.orangectconservationcommission.com/>

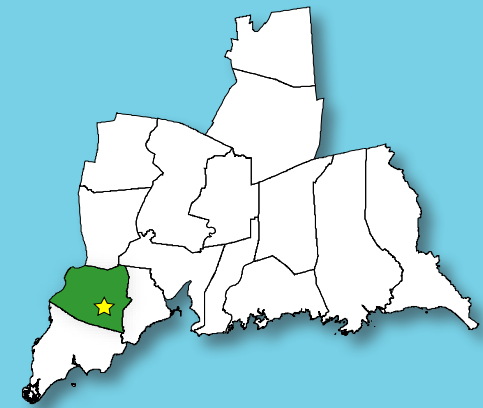
Questions regarding this brochure can be addressed to  
South Central Regional Council of Governments  
Phone: (203) 234-7555/Fax: (203) 234-9850  
E-mail: [trails@scrcog.org](mailto:trails@scrcog.org)

Scan QR Code to access the South Central Regional Council of Governments Recreational Trails Webpage



## Recreational Trails South Central Connecticut

# Turkey Hill Preserve



Orange, CT

# Turkey Hill Preserve



Photo Provided by OCC







## Trail Description:

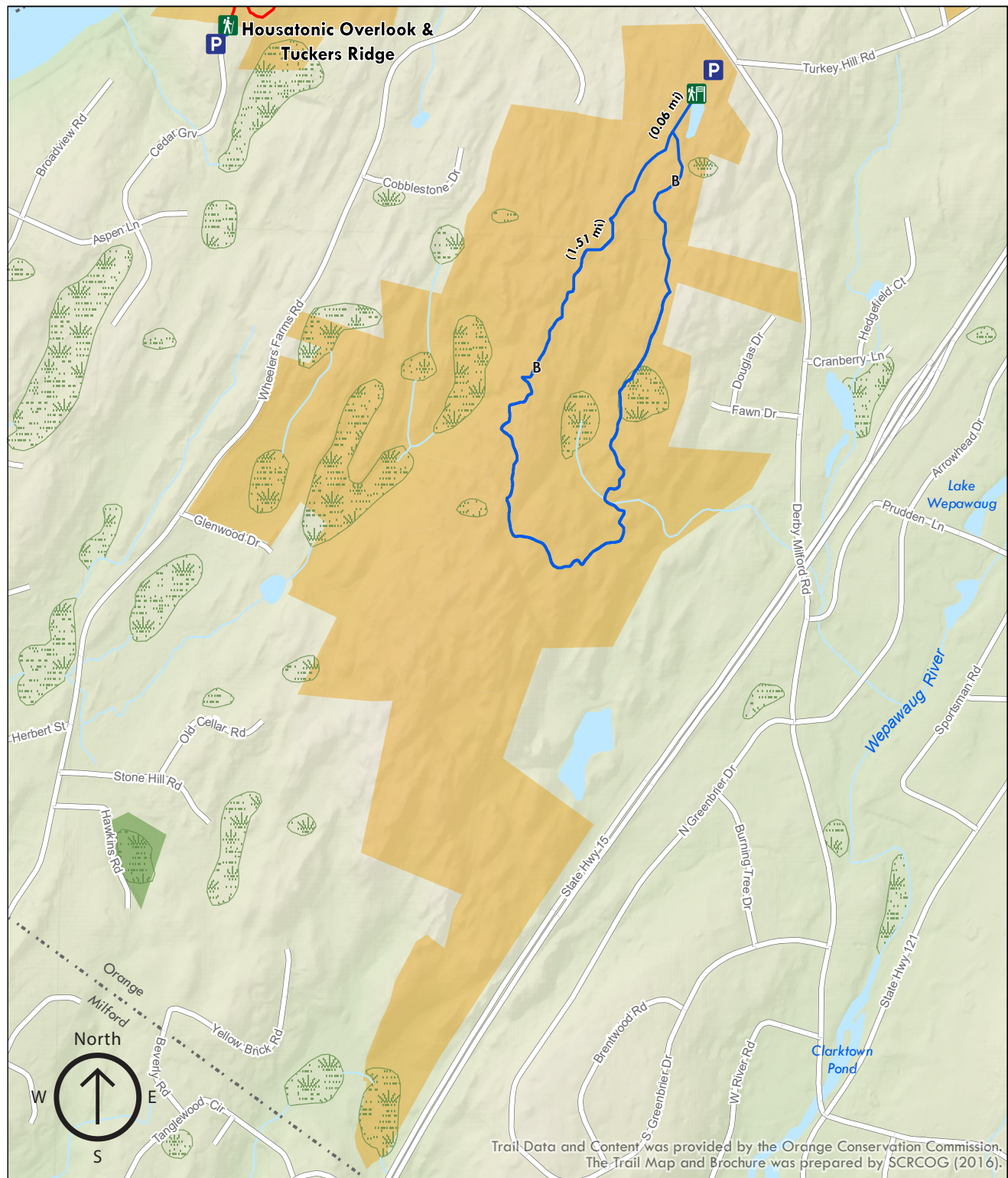
### Easy Hike

The largest open space site in Orange, these 376 acres will offer the most varied experiences for the visitor. An old growth core forest is dotted with ledges, ridges, gorges, streams, ponds, shallow waterways, and a 100-ft hill that is steep but hikeable. It is populated by a wide variety of plant life and wildlife.

Total trail distance is approx. 1.61 miles

## Legend

-  Parking
-  Trailhead
-  Trailhead/Sign
-  Blue (Turkey Hill Preserve Trail)
-  Wetlands
-  Town Property



Trail Data and Content was provided by the Orange Conservation Commission. The Trail Map and Brochure was prepared by SCRCOG (2016).