

Town of Woodbridge, CT Recreational Trails

**WO1: Alice Newton
Memorial Park Trails**

**WO2: Bishop Estate &
Darling House Trails**

WO3: Bishop West Trails

**WO4: Bladen's Brook,
Russel Swamp & Round
Hill Trails**

**WO5: Elderslie Preserve
Trail System**

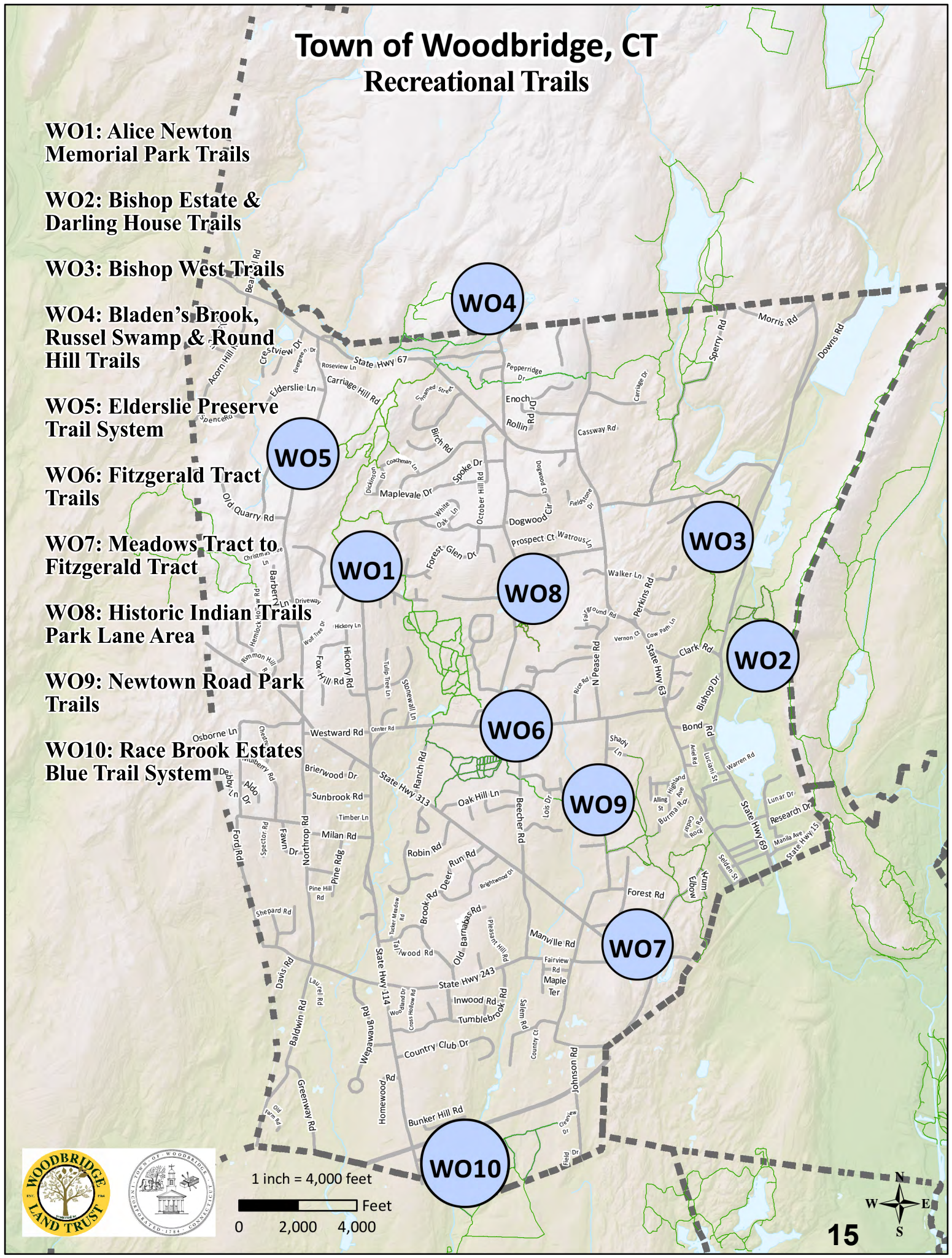
**WO6: Fitzgerald Tract
Trails**

**WO7: Meadows Tract to
Fitzgerald Tract**

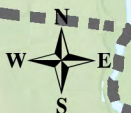
**WO8: Historic Indian Trails
Park Lane Area**

**WO9: Newtown Road Park
Trails**

**WO10: Race Brook Estates
Blue Trail System**



1 inch = 4,000 feet
0 2,000 4,000 Feet



Alice Newton Memorial Park Trails

Owned by the Woodbridge Park Association, one of the oldest land trusts in Connecticut, the Alice Newton Street Memorial Park is an outdoor enthusiast's dream located in the heart of Woodbridge.

The Park has approximately 100 acres of protected open space. It has four access points and consists of varied habitat classifications such as forests and woodlands, streams, wetlands, etc. Alice Newton Street Memorial Park provides walkers of all ages with easy access to the varied flora and fauna of Woodbridge.

Other major landmarks in the Park include "the meadow" and the nearby Wepawaug Falls. The "Falls" are actually on Woodbridge Land Trust Property, but have become synonymous with this park. The Wepawaug River's northern and eastern branches merge here before it empties into Long Island Sound. Many old stone walls run through much of the Park, adding an element of this land's past agricultural history. The meadow must have been quite wet at one time as a proposal was made in 1948 to drain the meadow so that other parts of the Park could be accessed.

The main "blue" trail was originally part of the Naugatuck Trail, one of the oldest Indian trails in Connecticut. This trail is a key component to Woodbridge's State Designated Greenway System. Hikers can enjoy about 5 miles of trails consisting of 6 major trails and several additional minor trails. Many of the boardwalks, bridges and benches have been constructed by Boys Scouts, many of whom were earning their Eagle Scout rank.

In January 1929, Mr. Newton Street donated 82 acres of forest north of the Woodbridge Town Hall as a memorial to his mother, Alice Newton-Street (1853-1928). The Park was created and named in her honor. Mr. Newton had drawn inspiration from the New Haven Green, Boston Common and Hyde Park in London and recognized the importance of open spaces. He wanted to preserve the rural character of the land as he had grown up to know it. Further, he wanted an association made up of people who cared enough about the Park to protect it, so that it would be there in perpetuity for all to use. The Woodbridge Park Association was incorporated, and over the years additional contiguous land donations have been made. Although maintaining the Park requires many man-hours of effort, the WPA is committed to preserve it as a very special haven for wildlife and hikers alike.

Trail Description:

Easy Walk to Moderate Hike

The blue trail is a remnant of Old Naugatuck Trail. Dirt trail and gravel areas are prominent. Most, if not all, the trails have some land bridges or boardwalk crossings.

Total trails distance is approx. 4.5 miles

Directions and Parking:

Take Rt 114 to the Woodbridge Town Center. Parking is available on Meetinghouse Lane or any other public parking areas. The main entrance for Alice Newton Street Memorial Park is located on Meetinghouse Lane just west of the rear driveway of the First Church of Christ. A large and prominent sign, detailing many of the Park's trails and landmarks is available to view.

Permitted/Prohibited Activities:

This Park is for passive recreation only, hiking and nature study. Pets are welcome but must be on a leash. Please pick up and bag all pet waste. All are welcome in the Park for passive recreation during daylight hours year-round.



Photo By The Woodbridge Park Association

Total Trails Length: Approx. 4.5 miles

Red Trail: 0.45 miles. Easy Walk

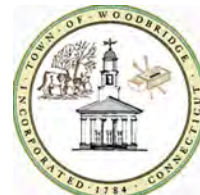
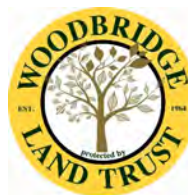
Yellow Trail: 0.58 miles. Easy Walk

Orange Trail: 0.48 miles. Easy Walk

Blue Trail: 1.06 miles. Easy Hike

Green Trail: 0.43 miles. Easy Walk

Blue/Yellow Trail: 0.20 miles. Easy Walk



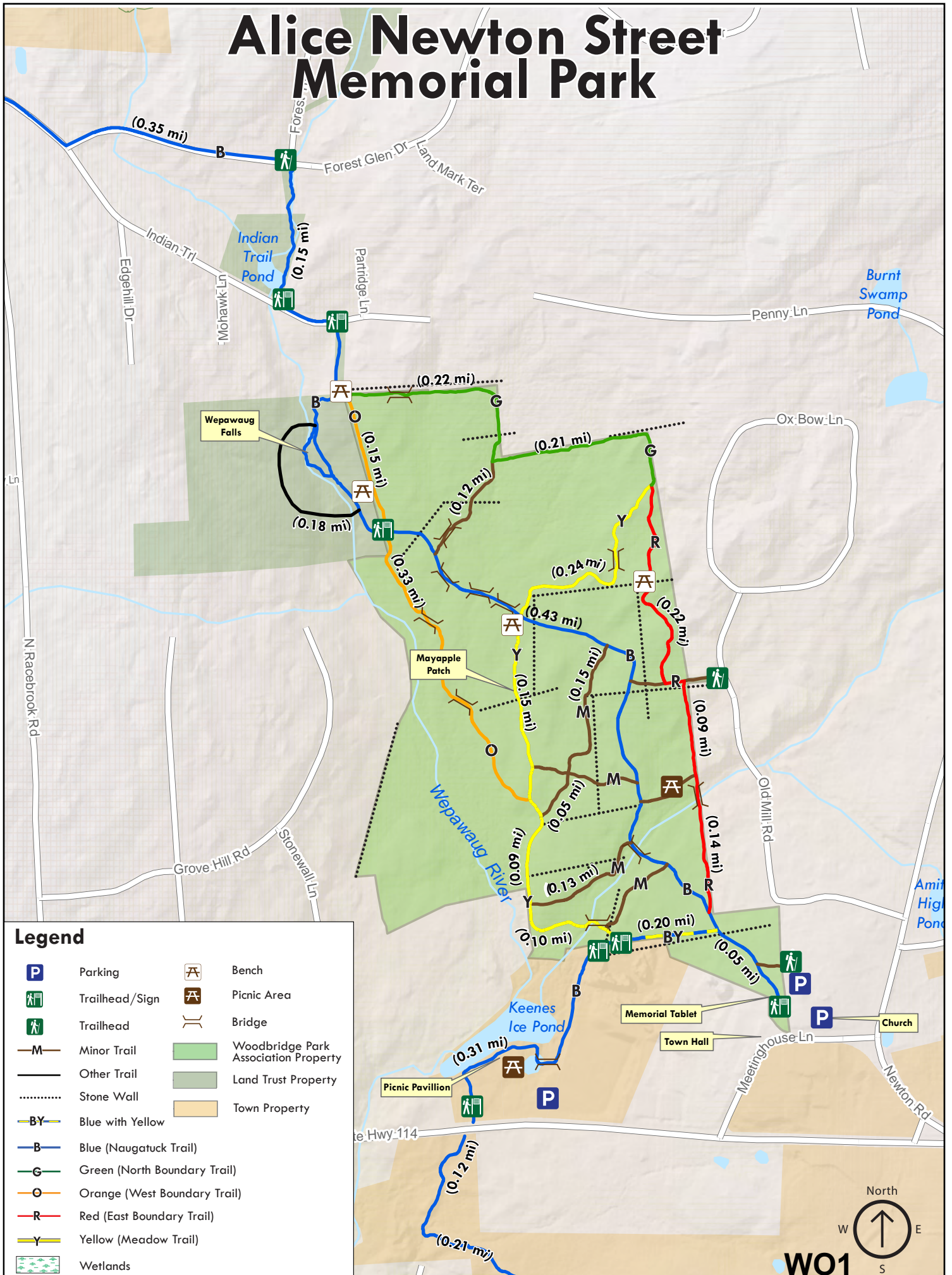
For more information about this location, contact:

Woodbridge Land Trust, Inc. or
Town of Woodbridge
(203) 389-3400

www.woodbridgect.org



Alice Newton Street Memorial Park



Legend

- | | | | |
|--|------------------------------|--|--------------------------------------|
| | Parking | | Bench |
| | Trailhead/Sign | | Picnic Area |
| | Trailhead | | Bridge |
| | Minor Trail | | Woodbridge Park Association Property |
| | Other Trail | | Land Trust Property |
| | Stone Wall | | Town Property |
| | Blue with Yellow | | |
| | Blue (Naugatuck Trail) | | |
| | Green (North Boundary Trail) | | |
| | Orange (West Boundary Trail) | | |
| | Red (East Boundary Trail) | | |
| | Yellow (Meadow Trail) | | |
| | Wetlands | | |



Bishop Estate & Darling House Trails

This Woodbridge Town Property known as the Bishop Estate/Darling House trail is located on the Litchfield Turnpike. The house is now home to the Amity & Woodbridge Historical Society.

Thomas Darling (1720-1789) played a significant role in colonial Connecticut and counted such prominent citizens as Benjamin Franklin, Ezra Stiles, Roger Sherman, and Benedict Arnold among his friends and associates. He studied theology at Yale University in New Haven, CT, graduated in 1740, and was licensed to preach in 1743. During his years in New Haven he was a manufacturer, merchant, Justice of the Peace, and "entrepreneur." He ran a Rope Walk, helped set up the first printing press in New Haven, tried to establish a glass business, and was a deputy to the General Assembly.

The Bishop Estate/Darling House is located just south of Lake Dawson (a Regional Water Authority Property) and just west of the West Rock Ridge State Park on the eastern border of Woodbridge. The trail also connects to a hike along the West Rock Ridge and then to the Regicides Trail (a CT Blue Blazed Trail). The Regicides Trail is named after the three judges who imposed the death sentence on Charles I of England in 1649 and fled to New England in 1660. Two of these men, William Goffe and Edward Whalley, hid from agents of the king in a rock cave on West Rock Ridge from May 15 to June 11, 1661. They returned to the cave in October 1664, after hiding out in Milford, and then fled to Hadley, Mass. The area is named Judges Cave in recognition of this historic event.

The Darling homestead is 160 acres of rolling meadow with surrounding woodlands. The trail includes numerous stone wall crossings and a bridge crossing over the West River.

When Thomas Darling decided to leave New Haven to pursue a country squire's life, he hired Abiel Gray of West Hartford, CT to build his new home. Gray took two years (1772-1774) to complete the project. The Gambrel roofed structure is now on the National Register of Historic Places. Many of the interior's furnishings are Darling family pieces, as the house and grounds were owned by the family until 1973. The house can be viewed by appointment only.

Easy or Difficult Hike

Blue and Blue/Yellow Trail: 0.8 miles. Hard Hike/ Difficult Climb. The blue trail starts off on a gentle slope through RWA land and ascends up over the mountain. About 0.25 miles climb up rocky terrain almost 300 ft.

Red Trail: 1 mile. Easy Hike. Minor slopes. Can be both wet and dry.

Directions and Parking:

The main entrance to the trails and parking is located adjacent to the Darling House located at 1907 Litchfield Turnpike (Route 69).

Permitted/Prohibited Activities:

This land is for passive recreational use only. No motorized vehicles are permitted. Only hiking and bicycles. Dogs are permitted on leash. Please bag and pick up all dog waste. Hunting or trapping is prohibited. Fishing is allowed in the West River. The trail map shows the trail connects to the Boy Scout's Camp Whiting, but please stay on the main trail as the camp is for authorized personnel only for the safety of all the scouts using the camp.



Photo By The Amity & Woodbridge Historical Society

Total Trails Length: Approx. 3.48 miles

North Summit Trail: 1.08 miles

Naugatuck Trail: 0.68 miles

Southern Loop Trail: 1.34 miles

Shortcut Trail: 0.06 miles

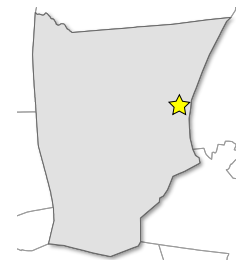
Loop Connector Trail: 0.32 miles



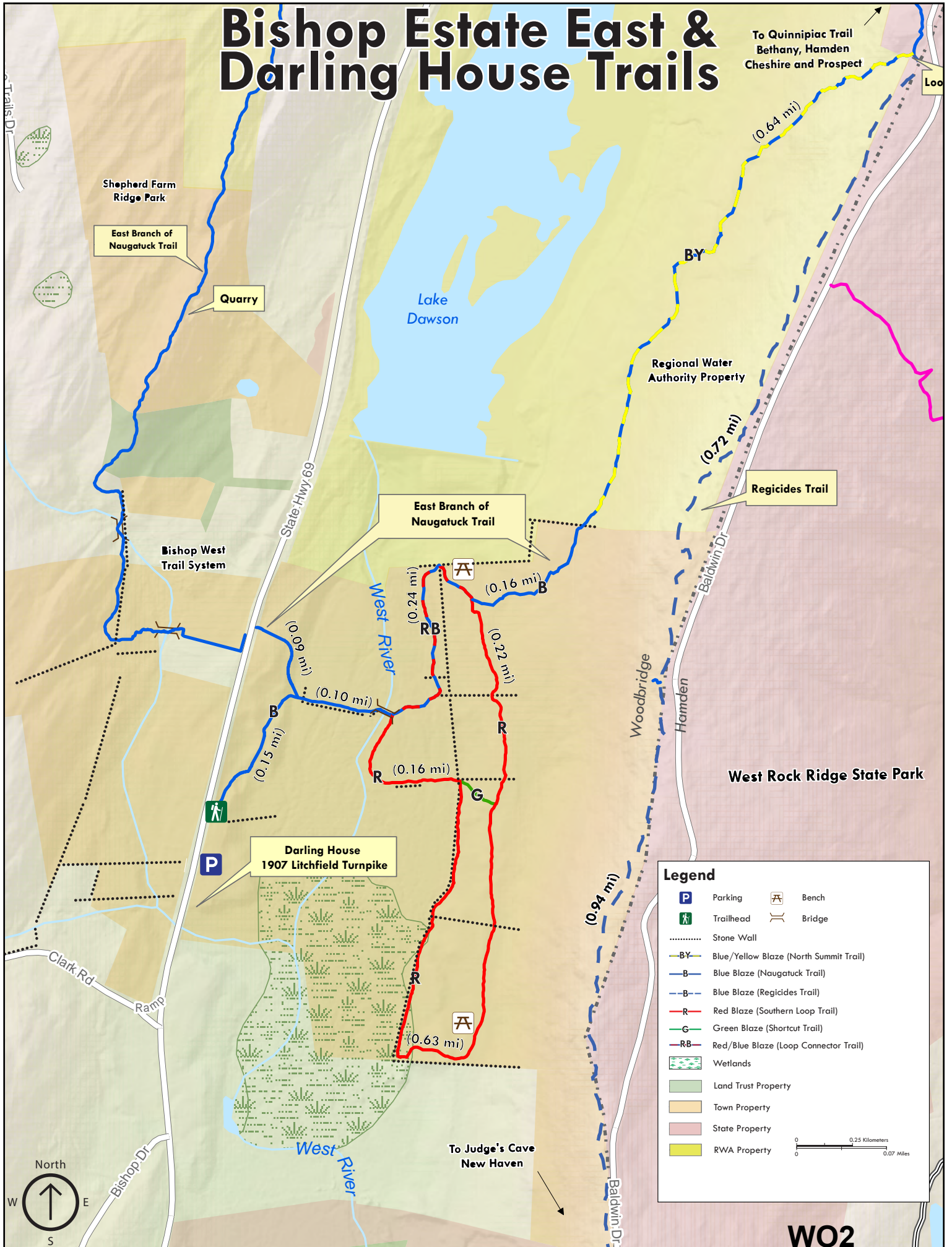
For more information about this location, contact:

Woodbridge Land Trust, Inc. or
Town of Woodbridge
(203) 389-3400

www.woodbridgect.org



Bishop Estate East & Darling House Trails



Bishop West Trails

From the Darling House Parking lot, located at 1907 Litchfield Turnpike (Rte 69), cross the Turnpike, the trail passes through the old barnyard, past the historic barn through the gate and cross over the stream.

Here you will pass Camp Whiting, the Woodbridge Boy Scout Camp where, for many years, Boy Scouts and Girl Scouts from across the state have learned their skills and enjoyed the land and environment. Camp Whiting is a private facility and hikers must stay on the main trail as only authorized personnel are allowed at the camp for the sake of campers' safety.

Continuing on, the hiker will join the Blue Arrow Trail and head north passing through lovely hardwood stands. After crossing a small stream the trail takes a sharp jog to the west before climbing steeply through mountain laurel to the top of the ridge overlooking the West River Valley which provides a beautiful New England scenic vistas. Close by is a historic cement kiln and hand dug quarry holes dating to 1847. Cement was produced from the blue-stone in the ridge. These are an example of the early industry in Woodbridge.

Below this ridge is the Shepherd Family Farm which has been farming for over 100 years. Recently, the farm was divided. The House and land surrounding the barn still comprise a working farm. The Shepherd Farm Ridge has been protected as open space through the cooperation of several private and public groups. Continuing on, the trail comes to an old spring road, proceed straight across the road and up to the top of the ridge again. Head west under the power lines and meet Dillon Road.

Cross this historic road and enter into the Regional Water Authority Property. You will need a pass from the RWA to continue into the RWA land. An alternative is to walk west on Dillon Road to Sperry Road and follow the road to Sperry Park. This 4 acres of delightful woods and glen contain paths along the Sargent River to the scenic cascading Sperry Falls. It was here that the Sperry Family maintained a gristmill and saw mill. The Park was donated to the Town by the heirs of Enoch Sperry. It is maintained as a conservation area.

Trail Description:

Easy Hike

The Bishop West Trail has a slow rise in elevation. The trail twists and turns through hemlocks and mountain laurel. Mostly a high and dry hike.

Total Trails Length: Approx. 1.3 miles

Directions and Parking:

Parking is available in an open field adjacent to Darling House. The trail begins across the street on the gravel driveway to the barns. No parking is allowed across the street.

Permitted/Prohibited Activities:

These areas are conservation areas and meant for passive activities and must be respected. Dogs must be leashed. Please bag and remove any dog waste.



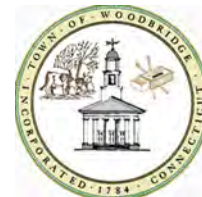
Photo By The Woodbridge Land Trust

Total Trails Length: *Approx. 2.75 miles*

Blue Trail (Naugatuck Trail): 1.56 miles. Easy Hike

Blue/Yellow Trail: 0.78 miles. Easy Hike

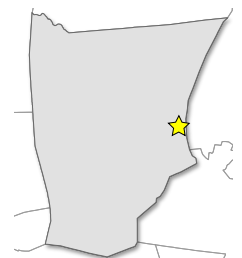
Other Trails: 0.41 miles. Easy Walk



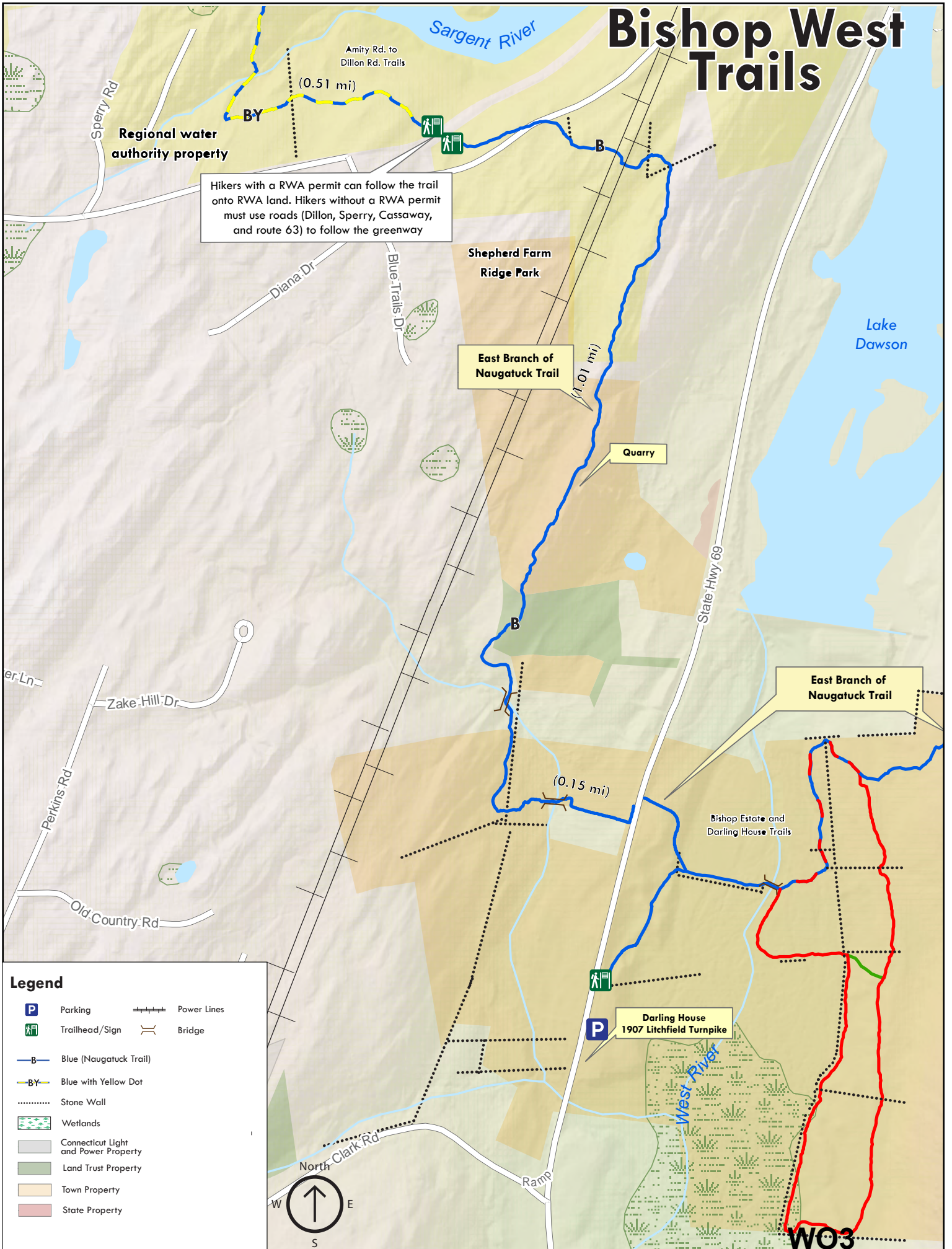
For more information about this location, contact:

Woodbridge Land Trust, Inc. or
Town of Woodbridge
(203) 389-3400

www.woodbridgect.org



Bishop West Trails



Legend

- | | | | |
|--|--------------------------------------|--|------------------------|
| | Blue with Yellow Dot | | Blue (Naugatuck Trail) |
| | Parking | | Trailhead/Sign |
| | Stone Wall | | Power Lines |
| | Wetlands | | Bridge |
| | Connecticut Light and Power Property | | |
| | Land Trust Property | | |
| | Town Property | | |
| | State Property | | |



Bladen's Brook, Russell Swamp & Round Hill Trails

Bladen's Brook, Russell Swamp, and the Round Hill Trails create part of the Woodbridge Greenway Trails System that is maintained by the Woodbridge Land Trust. As part of the Greenway, the trails connect into the Town's Elderslie Preserve and Regional Water Authority lands (access only for recreational permit holders). The trails can also be combined with hiking in the Town of Bethany's Bethany Farms Trail System to the north. At this location on Route 67 the Naugatuck Trail (blue trail) splits, creating an East/West branch and a North/South branch. From here, one can go to Bethany, Hamden or New Haven.

From the parking lot, the hiker can follow the Blue Trail East along the Bladen's Brook area through Russell Swamp and climb Round Hill. Here the steep ascent moves to the top of the glacial drumlin rising some 650 feet above sea level with a breathtaking panorama extending all the way to Long Island Sound. This view is best when the leaves are off the trees.

Alternatively, from the parking lot, the Blue Trail North crosses over the bridge and Sanford Road and meanders through the trails on the Town-owned 44-acre Bladens River Tract. From this area, one can look north from the Woodbridge Greenway Trail to Sanford Road where there is a stone embankment just east of the Thomas Sanford house. It is thought that this location is where the world's first friction matches were made.

This Yankee enterprise, which displaced the time-honored flint stone as a means for starting fire, later in the nineteenth century became the Diamond Match Company. All that remains of the factory is the stone retaining wall. This trail crosses a steep area and leads to the Bethany Farms Trail System.



Photo By Paul Decoster, Woodbridge

Trail Description:

Easy or Difficult hike

The Bladen's Brook and Russell Swamp trails are a leisurely hike. The Round Hill trail, alternatively, offers more of a challenge.

Total Trails Length: Approx. 1.4 miles

Directions and Parking:

In Woodbridge, the main parking is located just off Seymour Road (Route 67). From Amity Shopping Center take Amity Road (Route 63) north approximately 3 miles to left on Seymour Road (Route 67). Go approximately 2 miles to parking lot on right, just after gas line.

Permitted/Prohibited Activities:

This land is for passive recreation use only. No motorized vehicles are permitted. Dogs are permitted on leash. Please bag and pick up all dog waste. Hunting or trapping is prohibited. Horseback riding is prohibited. Due to raised boardwalk through swamp, small children or pets are not recommended.

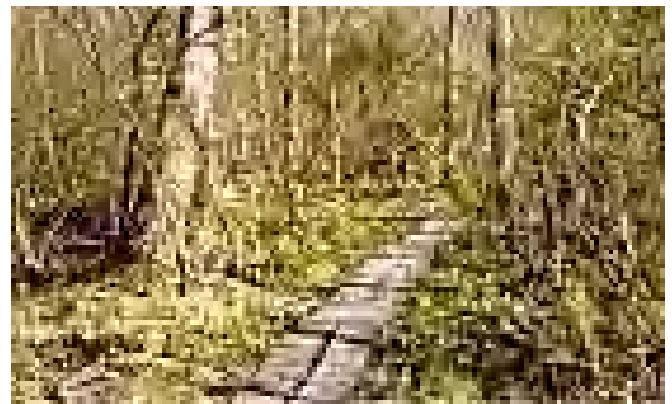


Photo By Paul Decoster, Woodbridge Conservation Commission

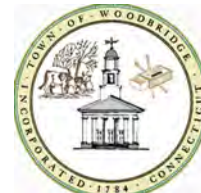
Total Trails Length: Approx. 4.5 miles

Yellow Trail : 0.13 miles. Easy Hike

Yellow Trail (Ridge Trail): 0.62 miles. Easy Hike

Yellow Trail (Big Tree Trail): 0.34 miles. Easy Hike

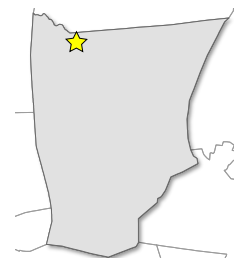
Blue Trail (Naugatuck Trail): 1.59 miles. Easy Hike



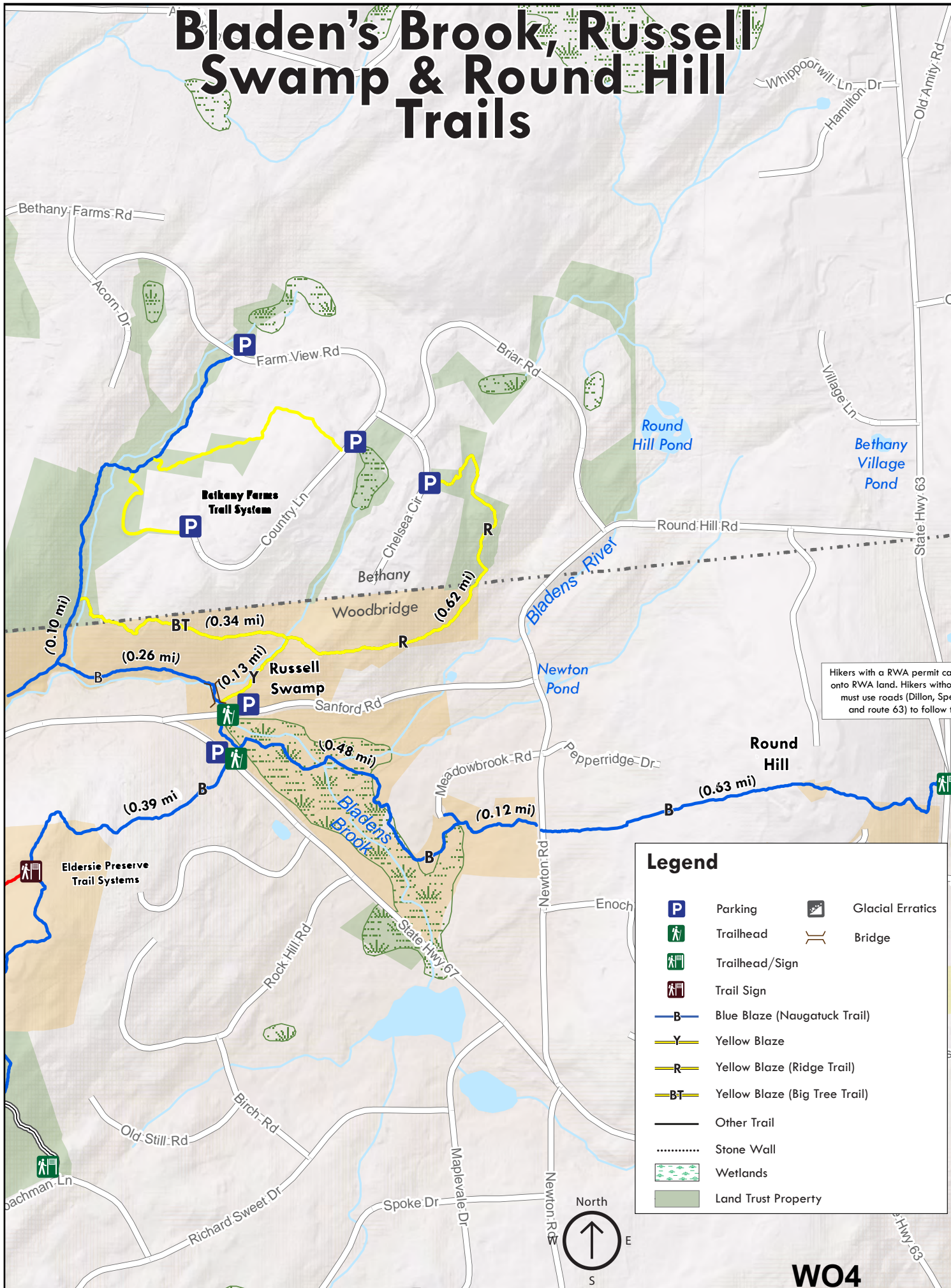
For more information about this location, contact:

Woodbridge Land Trust, Inc. or
Town of Woodbridge
(203) 389-3400

www.woodbridgect.org



Bladen's Brook, Russell Swamp & Round Hill Trails



Hikers with a RWA permit can onto RWA land. Hikers without must use roads (Dillon, Sp and route 63) to follow t

Legend

	Parking		Glacial Erratics
	Trailhead		Bridge
	Trailhead/Sign		
	Trail Sign		
	Blue Blaze (Naugatuck Trail)		
	Yellow Blaze		
	Yellow Blaze (Ridge Trail)		
	Yellow Blaze (Big Tree Trail)		
	Other Trail		
	Stone Wall		
	Wetlands		
	Land Trust Property		



WO4

Elderslie Preserve Trail System

Three adjacent sites combine to form this trail system. The 200-acre Elderslie Preserve is owned by the Town of Woodbridge and was purchased in 2000 with assistance from the Trust for Public Land (TPL) and with partial funding from the Department of Environmental Protection and the Regional Water Authority. The purchase was completed as part of TPL's Connecticut Watershed Initiative, a statewide effort to protect land surrounding active drinking water supplies as well as former and potential sources of clean drinking water.

The two other sites: the 27-acre Lodge and Milford Meadows are owned by the Woodbridge Land Trust (WLT). The Lodge Tract was donated by Miss Helen Newton whose family had owned the land since before the American Revolution.

The Lodge includes the famous trail taken by the British Regicides Dixwell, Whalley, and Goffe as they evaded Charles I's agents. According to legend, Goffe said at the spring in this area, "would to God we had a hatchet." He then looked down and immediately found a hatchet left by the Indians. Goffe and Whalley built a crude shelter here and named it Hatchet Harbor. Another notable feature on the site is the Big Boulder - one of the largest glacial erratics in the state.

Combined, the sites are a mix of woodlands, fields, and vernal ponds and is a critical link in the Woodbridge Greenway. The area includes the headwaters of the Wepawaug River and provides breeding habitat for a number of rare species, including marbled and four-toed salamanders. Glacial erratics are also visible along other portions of the trail system and Colonial foundations can be located on the Elderslie parcel adjacent to Peck Road. To the south, the trail off Orchard Road also includes a cairn, a heap of stones piled up as either a memorial or landmark. A major section of the Naugatuck Trail (blue trail) passes through Elderslie and has a northern access point on Route 67 and a southern access point at the junction of North Racebrook and Indian Trail.

Trail Description:

Easy to Hard Hike

The trail system at Elderslie Preserve offers a varying degree of difficulty. The Red trail is an easy walk, the Yellow trail is a moderate hike, the Orange trail is a hard hike and the Blue trail begins as an easy hike in the south and becomes more difficult.

Total trails distance is approx. 3.75 miles

Directions and Parking:

The main entrance and parking for the Elderslie Preserve is located on Peck Hill Road. From the Amity Shopping Center, follow Amity Road (Route 63) north approx 3.1 miles to the west/left on Seymour Road (Route 67) for 2 miles, and then left onto Peck Hill Road. A sign for the Elderslie Preserve will be on the right side with a left entrance to the parking lot.

Permitted/Prohibited Activities:

This land is for passive recreation use only. No motorized vehicles are permitted. Dogs are permitted on leash. Please bag and pick up all dog waste. Hunting or trapping is prohibited as well as fires, camping and picking of vegetation.



Photo By Kathy Gartland

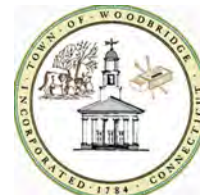
Total Trails Length: Approx. 3.75 miles

Red Trail: 0.75 miles. Easy Walk

Yellow Trail: 1.0 miles. Moderate

Orange Trail: 0.5 miles. Hard Hike

Blue Trail: 1.75 miles. Difficult at northern end to moderate mid-way to easy walk at the south entrance.



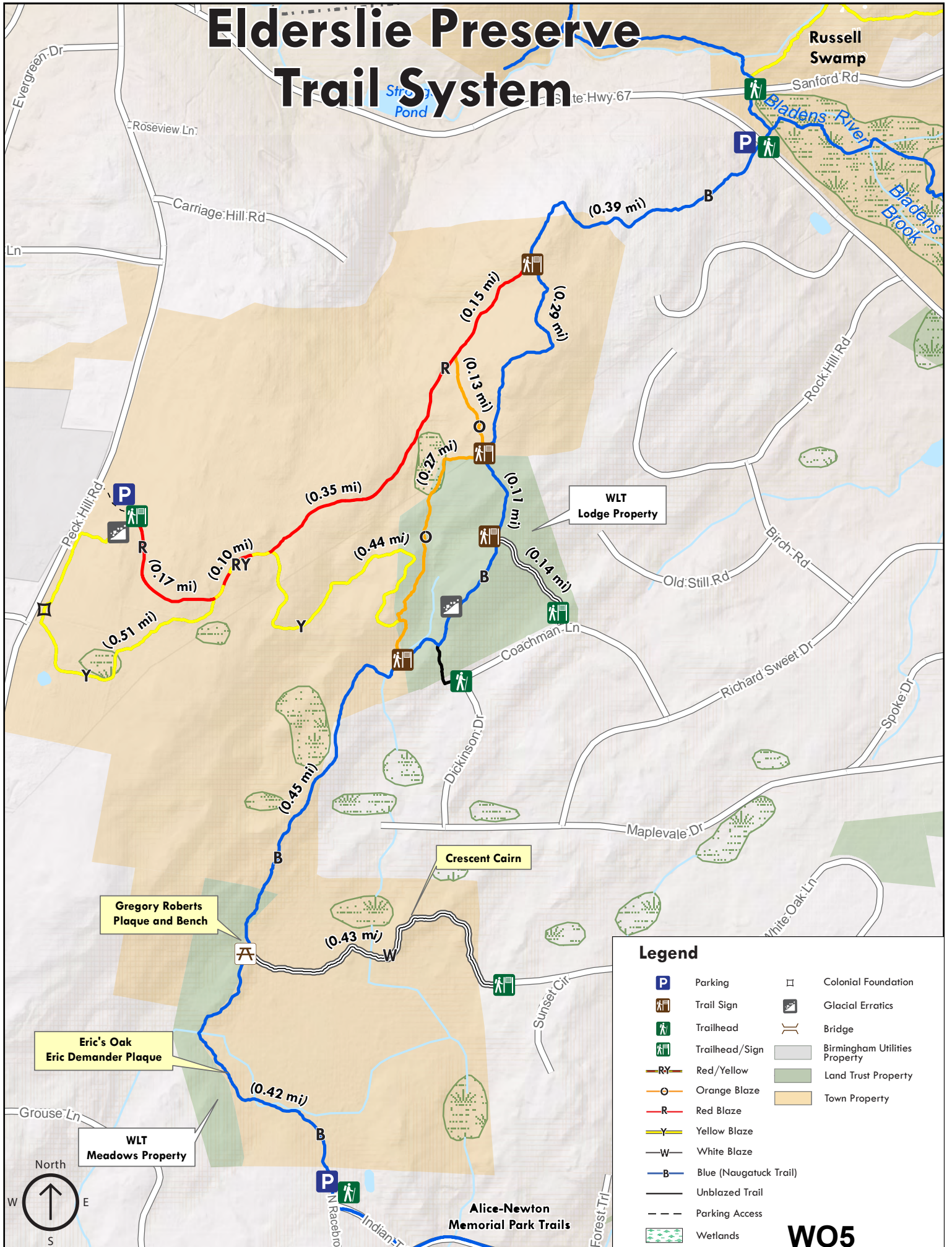
For more information about this location, contact:

Woodbridge Land Trust, Inc. or
Town of Woodbridge
(203) 389-3400

www.woodbridgect.org



Elderslie Preserve Trail System



WO5

Fitzgerald Tract Trails

The Town owned Fitzgerald Track Trails are located in the center of Woodbridge. These 133 acres of meadows and woodland were once part of the Fitzgerald Estate Farm. Later, the town leased the front fields to Fred Shepherd and is now farmed by Keith Arnold. It is a testimony to the Town's agrarian roots and a beacon of the rural quality of life that is revered by the Woodbridge Residents.

These fields, meadows, wetlands and woodlands contain walking fitness trails, community gardens, provide cross country skiing in winter, a calm serene atmosphere where one can relax and wile away the hours of a beautiful day in Woodbridge. Artists are often seen here recording the landscape on their canvas.

Recently, the Woodbridge Land Trust has established a Chestnut Tree Orchard where several hundred Chestnut saplings are growing in an attempt to breed blight resistant American Chestnut Trees. Flora and fauna abound on this property. Picnic tables and benches are dotted along the way.

From the parking lot, one can proceed past the gardens to the open meadow and into the woodlands continuing north on the main trail meeting Center Road. Cross the road and enter the Rice property and on into the Alice Newton Street Memorial Park. An alternate trail leads south to Rimmon Road. The very popular Fitness Trails loop around the two large open fields to the north of the parking lot. The new state-of-the-art Firehouse is adjacent to the lower loop trail.

On the southside of the parking lot, one can enter the woods at the Blue Trail marking and continue to Beecher Rd. There, cross the street and continue on the Naugatuck Trail through Race Brook Estates trail system, out to Pease Road and beyond.



Photo By Emmeline Alaconis, SCRCOG

Trail Description:

Easy Hike

The Fitzgerald Tract Trails are an easy walk through and around the Woodbridge Community Gardens. There are two surrounding trails that one can extend their hike on if they wish.

Total trails distance is approx. 2.5 miles

Directions and Parking:

The parking lot is located in the Center of Woodbridge, just off of Beecher Road, south of Center Road.

Permitted/Prohibited Activities:

The Fitzgerald Track is open dawn to dusk. Dogs must be leashed. Please bag and remove any dog waste. Picking of wildflowers or intruding into the community gardens is prohibited. This is a conservation area and passive recreation area that must be respected.



Photo By The Woodbridge Land Trust

Total Trails Length: Approx. 2.5 miles

Red Trail: 0.32 miles. Easy Walk

Red Trail (North Cornfield Loop): 0.26 miles. Easy Walk

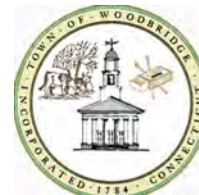
Light Blue Trail (West Loop): 0.28 miles. Easy Walk

Blue Trail (Naugatuck Trail): 1.3 miles. Easy Hike

Green Trail (South Cornfield Loop): 0.42 miles. Easy Walk

White Trail: 0.28 miles. Easy Walk

Other Trails: 0.42 miles. Easy Walk



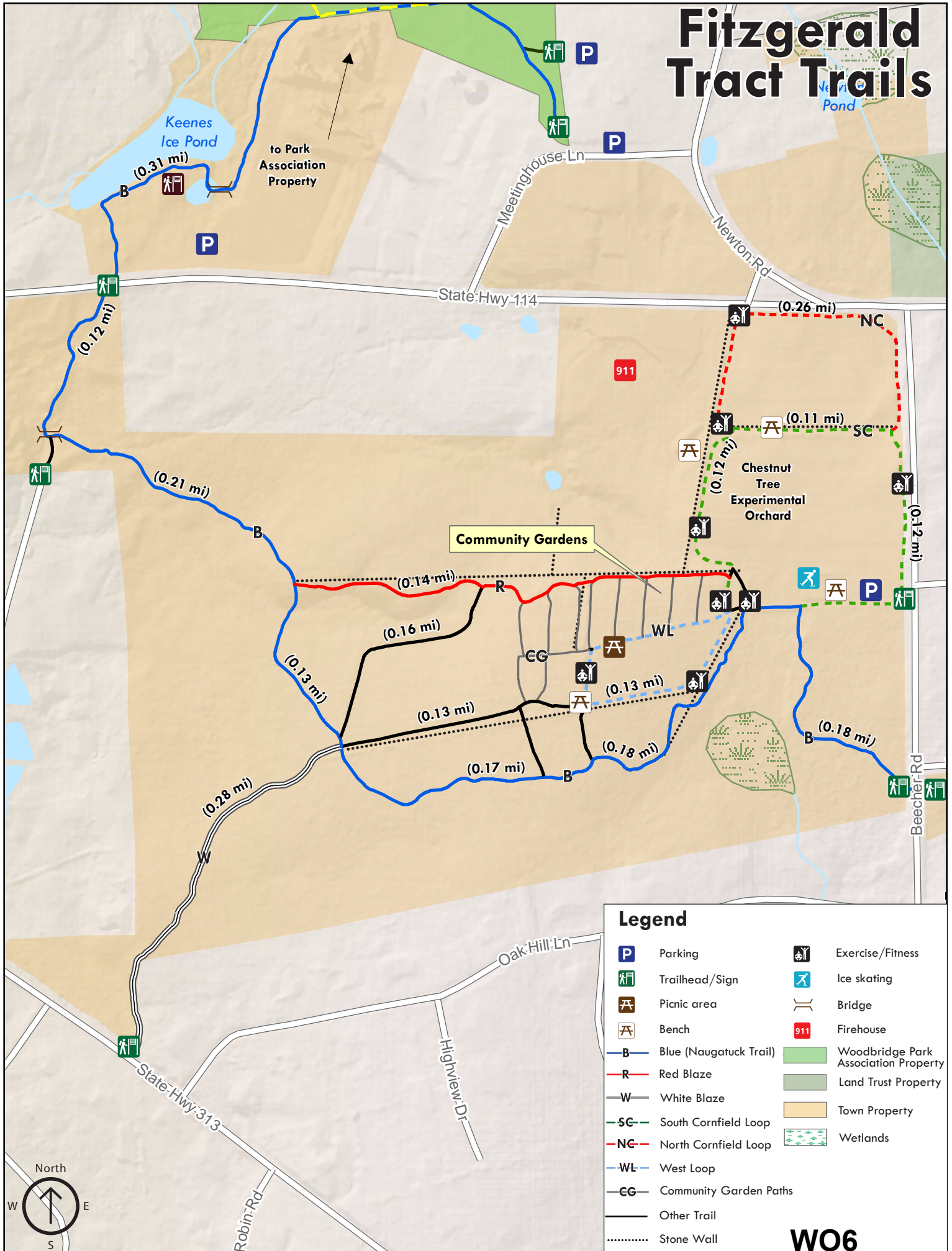
For more information about this location, contact:

Woodbridge Land Trust, Inc. or
Town of Woodbridge
(203) 389-3400

www.woodbridgect.org



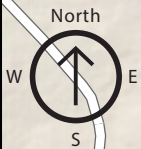
Fitzgerald Tract Trails



Legend

- | | |
|------------------------|--------------------------------------|
| Parking | Exercise/Fitness |
| Trailhead/Sign | Ice skating |
| Picnic area | Bridge |
| Bench | Firehouse |
| Blue (Naugatuck Trail) | Woodbridge Park Association Property |
| Red Blaze | Land Trust Property |
| White Blaze | Town Property |
| South Cornfield Loop | Wetlands |
| North Cornfield Loop | |
| West Loop | |
| Community Garden Paths | |
| Other Trail | |
| Stone Wall | |

WO6



Meadows Tract to Fitzgerald Tract

This map shows the continuation off the Old Naugatuck Trail into the heart of Woodbridge. The trail runs along some paved roads due to modern development, but most of it is in its original known location, especially through the Alice Newton Street Memorial Park. This trail connects the Elderslie Preserve to Fitzgerald after passing through Wepawaug Falls and Alice Newton Street Park. Enjoy the beauty of wetlands, a pond for fishing or winter ice skating, the serenity of the Wepawaug River and Wepawaug Falls and hardwood forest stands. Finish out the hike by having lunch at the pavilion with picnic tables, letting children play on Hitchcock Playground or maybe even catch a baseball game at Center Field.



Photo By Woodbridge Park Association



Photo By Woodbridge Park Association

Trail Description:

Easy walk to Moderate Hike.

The trail runs along a paved road at the northern and through some wet river areas to some waterfalls. Continues through Alice Newton Street Memorial Park (Private) owned by the Woodbridge Park Association into some town owned land where there is a pavillion as well as Kimberly and Sandra Hitchcock Memorial Playground, a small children play park.

Trail length is approx. 2.0 miles

Directions and Parking:

Parking is available at Route 114 at Center Field. Parking is also available at the junction of North Race Brook Road and Indian Trail Road.

Permitted/Prohibited Activities:

Passive recreation including hiking, running, bicycling, nature study. Pets must be leashed. Please bag and remove any dog waste.

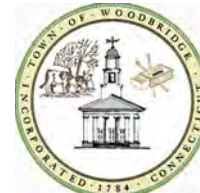


Photo By Woodbridge Park Association

Total Trails Length: Approx. 2.0 miles

Blue Trail (Naugatuck Trail): 1.44 miles. Easy to Moderate Hike

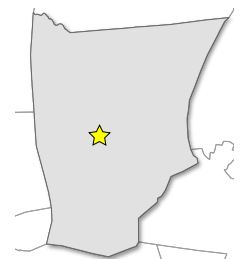
Blue/Yellow Trail: 0.10 miles. Easy Hike



For more information about this location, contact:





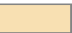

Woodbridge Land Trust, Inc. or
Town of Woodbridge
(203) 389-3400

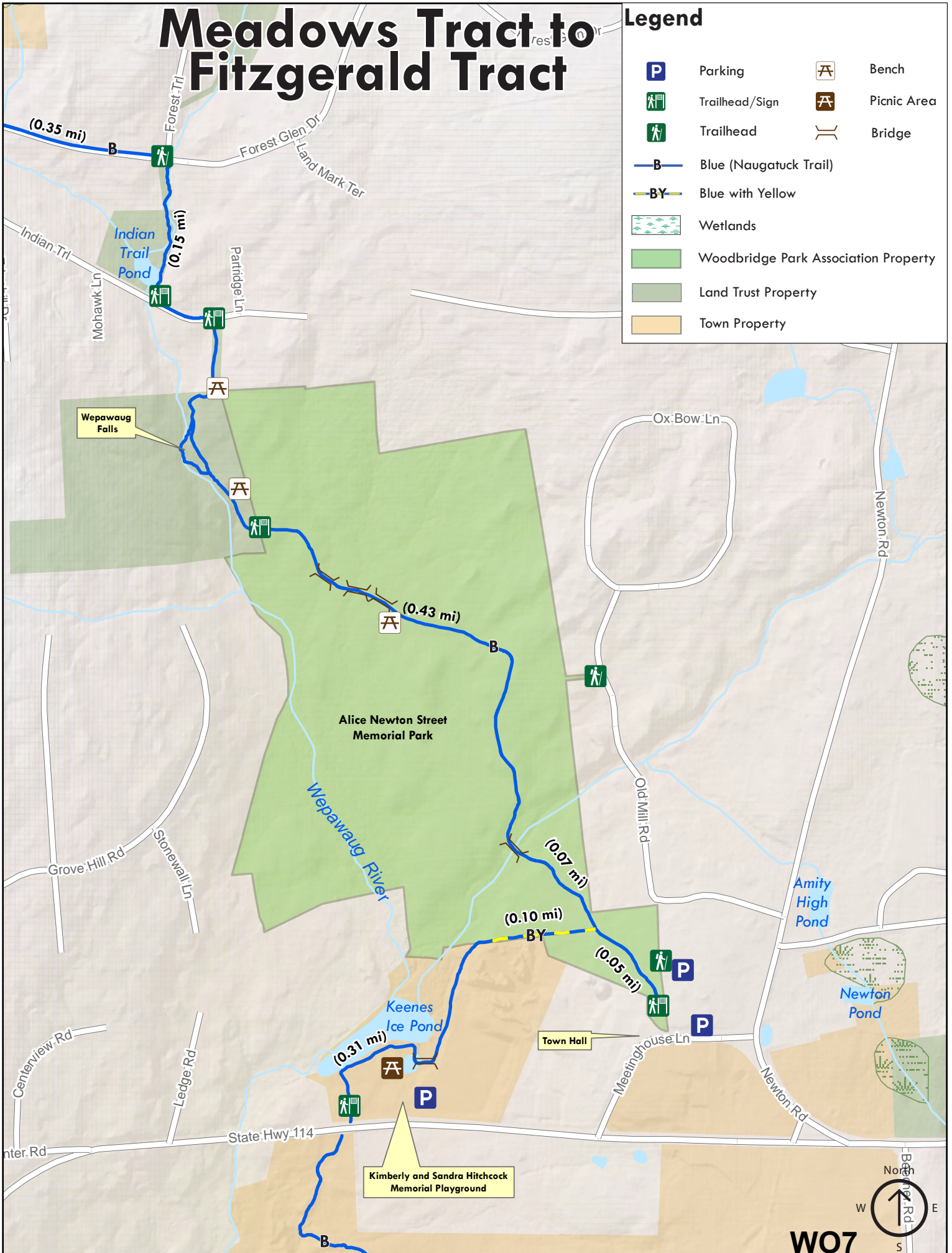
www.woodbridgect.org



Meadows Tract to Fitzgerald Tract

Legend

-  Parking
-  Trailhead/Sign
-  Trailhead
-  Blue (Naugatuck Trail)
-  Blue with Yellow
-  Wetlands
-  Woodbridge Park Association Property
-  Land Trust Property
-  Town Property
-  Bench
-  Picnic Area
-  Bridge



Historic Indian Trails Park Lane Area

This area is located off Fountain Street at the Woodbridge New Haven line. The trails lead north through historic Indian Lands. Many arrowheads, spearpoints and artifacts have been found here. It is believed that there is an Indian burial ground somewhere in the vicinity. The Mack and Sills American Indian Families, part of the Paugasset Tribe, have lived in the Park Lane, Krum Elbow area for generations.

The trails are remnants of the Old Naugatuck Trail and The Derby Trail (historic Paugusset Indian Trail). Indians and later early settlers used these trails as their avenues from New Haven to Naugatuck or Derby and beyond. The fabled Leatherman traversed the trails in his journeys to peddle his wares. They were well worn trails in days of yore. Today one can use the trails to enjoy the natural and historic beauty of Woodbridge.

From the trail head at Fountain Street, the trail climbs alongside the highway cut for a splendid view across New Haven Sound, West Rock and East Rock. From here the trail turns away and up a gradual slope to Big Boulder, a huge glacial erratic believed by many to be the largest in Connecticut. The trail then crosses a narrow ridge and descends down to a feeder trail (white) that branches off to the right at the top edge of the ridge. Now descend down past an old foundation and the trail sharply doglegs to the left going under the power lines to another glacial erratic. You are now at the end of Krum Elbow, a dirt road will lead you to the end of Park Lane to meet with the Old Derby Trail. Make a right on Old Derby Trail and you can go all the way down to Amity Road. You can also hook up with the Yellow Trail which will take you to another old foundation of a gristmill where grain was ground between a round stone and an anvil shaped stone.

The small brook turned the waterwheel which in turn would rotate the round stone. Continuing on the sojourner will eventually come to the Naugatuck Trail (Blue) going left brings you back to Fountain Street. Going right will bring you up to the power lines. At the power line junction, take a left toward Pease Road and a right onto Pease Road. This will take you to the center of town onto the Fitzgerald Tract trails.

Trail Description:

Moderate to Hard Hikes on White, Blue, Red and Yellow Trails

The trails lead north through historic Indian Lands. Many arrowheads, spearpoints and artifacts have been found here. It is believed that there is an Indian burial ground somewhere in the vicinity.

Total trails distance is approx. 2.5 miles

Directions and Parking:

From CT Route 15 take exit 59 and turn south onto Whalley Ave (Route 69), turn left to stay on Whalley Ave (now Route 63). Turn south onto Randall St, then turn west onto Fountain St (Route 243). Follow the road until Park Ln and turn right. On-street parking is available at the trail heads on Park Lane and Fountain Street.

Permitted/Prohibited Activities:

This area is for passive recreation only: hiking, bicycling and cross - country skiing. All pets must be leashed. Please bag and remove any dog waste. No littering.



Photo By Emmeline Alaconis, SCRCOG

Total Trails Length: Approx. 2.5 miles

Red Trail: 1.0 mile. Moderate to Hard Hike

Yellow Trail: 0.50 miles. Moderate to Hard Hike

White Trail: 0.26 miles. Moderate to Hard Hike

Blue Trail (Naugatuck Trail): 2.86 miles. Moderate to Hard Hike

Blue/Yellow Trail: 0.64 miles. Easy Walk



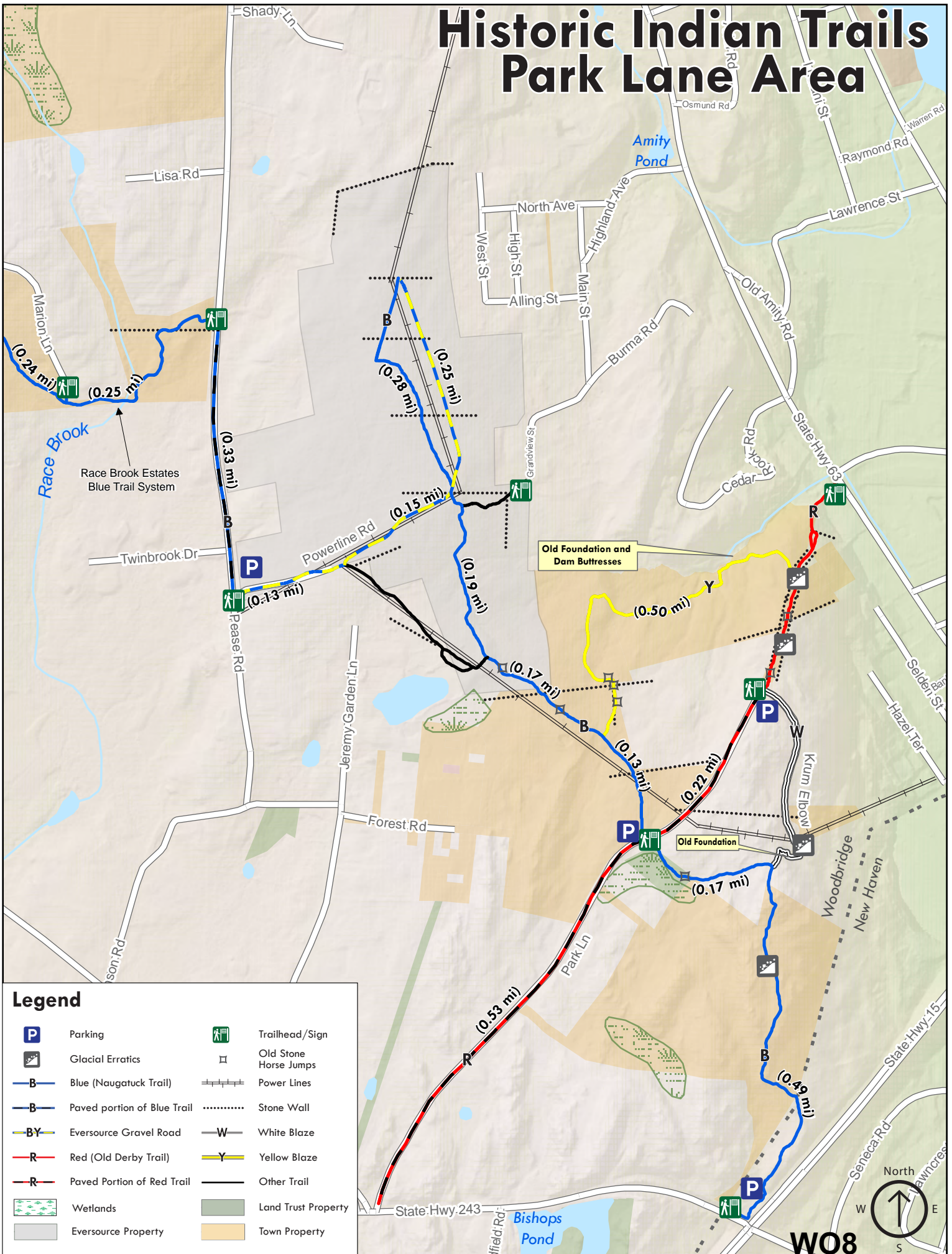
For more information about this location, contact:

Woodbridge Land Trust, Inc. or
Town of Woodbridge
(203) 389-3400

www.woodbridgect.org



Historic Indian Trails Park Lane Area



Legend

- | | |
|-----------------------------|-----------------------|
| Parking | Trailhead/Sign |
| Glacial Erratics | Old Stone Horse Jumps |
| Blue (Naugatuck Trail) | Power Lines |
| Paved portion of Blue Trail | Stone Wall |
| Eversource Gravel Road | White Blaze |
| Red (Old Derby Trail) | Yellow Blaze |
| Paved Portion of Red Trail | Other Trail |
| Wetlands | Land Trust Property |
| Eversource Property | Town Property |

North
W E
S

W08

Newtown Road Park Trails

During the mid-1980's, the Town affirmed its commitment to preserving open space in Woodbridge by requiring developers to donate a percentage of the land on which they build. As a result, important gifts of land were made to the Woodbridge Park Association and conservation restrictions were put on these lands to preserve them as protected open space parcels.

Over the years, through more public/private land donations, the area grew large enough to put some hiking trails in and serve as a site for Boy Scouts to do service projects. This acquisition was critical, as it provided for a safe access point at #7 Hampton Drive. This access point would allow for parking and aide in being able to maintain the trails, etc.

The now 20+ acre Newton Road Park includes a series of brooks that form the headwaters of the eastern branch of the Wepawaug River. The Park is graced with several stone walls, wetlands, a small pond and vernal pools. It is a habitat for many birds, reptiles, deer, etc. There are three main trails to hike and enjoy. Some small foot bridges and boardwalk areas as well as a small picnic area.

The park can be accessed from the main trailhead at Hampton Drive (White Trail), or the trailheads (both Red) at Newton Road and behind the north side of the Amity High School Athletic Fields. Look for the Newton Rd Park signs at each trail head. All trails are clearly marked for ease of use. Visitors are welcome year-round to enjoy the beauty of our Woodbridge trails. Our parks are free and open to all. We ask that you take away any trash you bring in or remove any you might find.



Photo From 2005 SCRCOG Brochure

Trail Description:

Hard Hike

90% of the hiking grounds are wetlands and some of the river crossings have no bridges. Boots are recommended.

Total trails distance is approx. 1.0 miles

Directions and Parking:

Take Newton Rd to Hampton Drive. Look for signage to park entrance. The best parking is located at #7 Hampton Drive, where one can access the park at the Trail Head / White Trail. Additional parking may be found at Amity High School, during weekends, holidays or when school is not in session. There is no off-street parking on Newton Road, although access to the park is available at the Red Trailhead sign.

Permitted/Prohibited Activities:

This Park is for passive recreation only; hiking, nature and fauna observing, photography. Pets are welcome but must be leashed.



Photo From 2005 SCRCOG Brochure

Total Trails Length: Approx. 1.0 miles

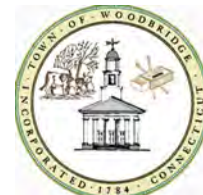
Blue Trail: 0.60 miles. Hard Hike

Blue/Red Trail: 0.12 miles. Hard Hike

Red Trail: 0.21 miles. Hard Hike

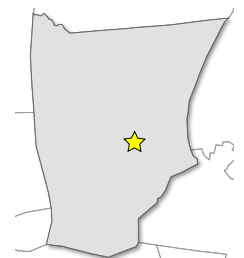
White Trail: 0.28 miles. Hard Hike

Unblazed Trail: 0.03 miles. Hard Hike

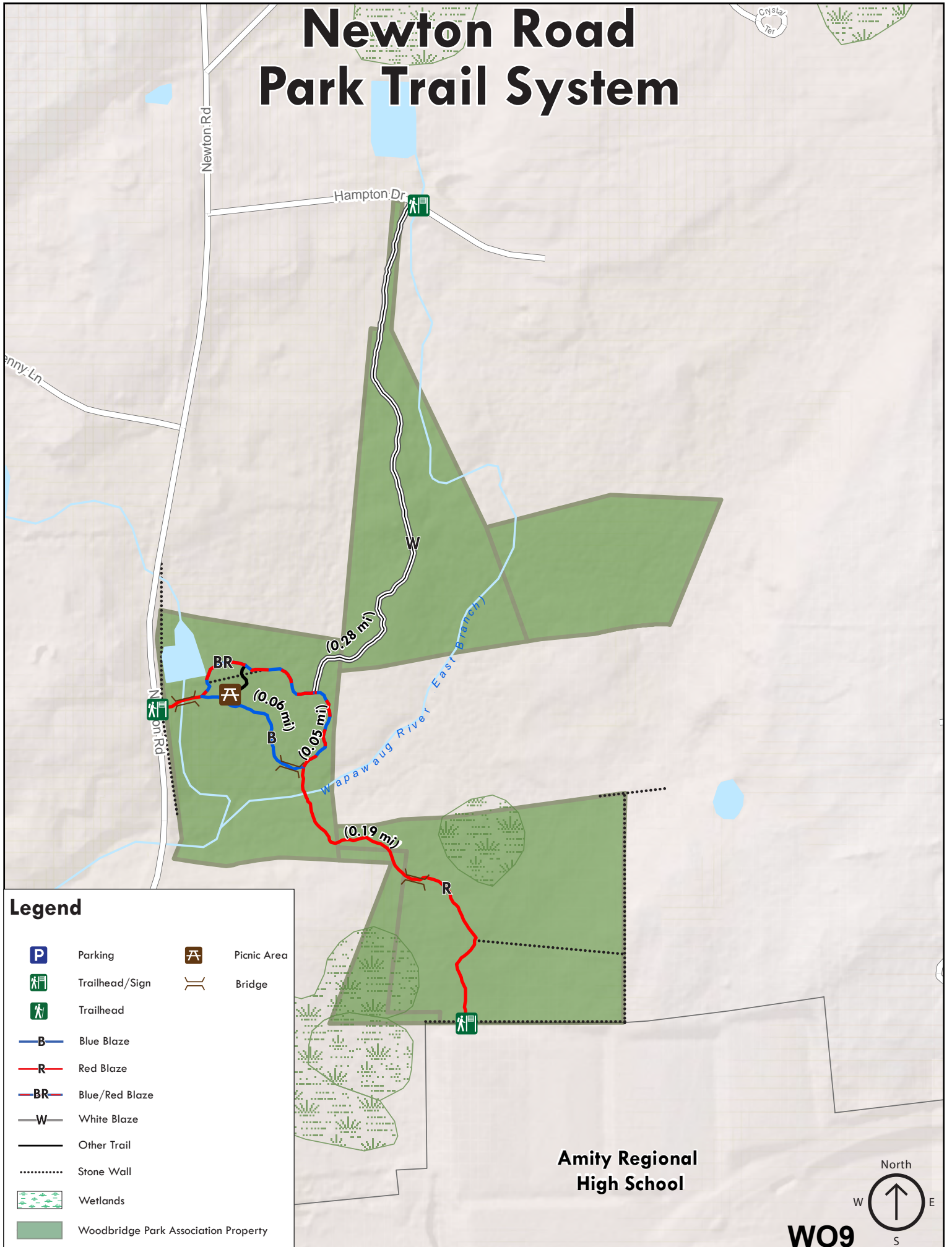


For more information about this location, contact:














Woodbridge Park Association, Inc.
president@woodbridgeparks.org
www.woodbridgeparks.org



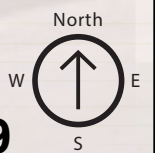
Newton Road Park Trail System



Legend

- | | | | |
|---|--------------------------------------|---|-------------|
|  | Parking |  | Picnic Area |
|  | Trailhead/Sign |  | Bridge |
|  | Trailhead | | |
|  | Blue Blaze | | |
|  | Red Blaze | | |
|  | Blue/Red Blaze | | |
|  | White Blaze | | |
|  | Other Trail | | |
|  | Stone Wall | | |
|  | Wetlands | | |
|  | Woodbridge Park Association Property | | |

Amity Regional
High School



WO9

Race Brook Estates Blue Trail System

The Race Brook Estates Blue Trail System enters from Beecher Road across from the Fitzgerald Track and to the south of Woodside Drive. The area, at one time, was part of the Bussman Estates enjoyed by hikers and wild life. The Bussman heirs sold the acreage and now many Toll Brothers homes dot this land. When walking this trail please be respectful of the many homes abutting this trail system.

The trail is the result of the open space set-aside by regulations enacted by the Woodbridge Town Plan and Zoning Commission to help protect wetlands, trails, open space, habitat and the environment. From this work done by the Town and the Conservation Commission, an area along Race Brook is permanently protected by a conservation restriction, permanent markers and noted on actual deeds to make abutting owners more aware of the protected open space boundaries. This action by the town was the first of its kind. The Race Brook Conservation Area, including the Race Brook, is an integral part of this track of land.

This trail is an important link from the Center of Town and the Fitzgerald Tract to the Historic Indian Trail - Park Lane Area. Although it is unclear which path the Naugatuck Trail took after it passed through Alice Newton Street Memorial Park, the present path keeps the Naugatuck Trail from being broken up or lost through development. The Woodbridge Land Trust maintains the trail with volunteer help and hopefully this trail will be used and enjoyed for another couple of centuries.

From the Pease Road trail head, the hiker may go west towards the Fitzgerald Tract or south to Historic Indian Trails, which includes many historic trails, foundations, erratics and scenic views of West Rock, East Rock and Long Island Sound.



Photo by Emmeline Alaconis, SCRCOG

Trail Description:

Moderate Hike

The trail winds through residential development with 28' corridor, some open space, across race brook stream, to another paved road to powerlines. Connects with Indian Trails. Can be wet in some areas.

Total trail length is approx. 0.75 miles

Directions and Parking:

On-street parking is available at the trail heads located on Beecher Road, Marion Drive, Loise Drive, and Pease Road.

Permitted/Prohibited Activities:

This Park is for passive recreation only; hiking, nature and fauna observing, photography. Pets are welcome but must be leashed.



Photo From 2005 SCRCOG Brochure

Total Trails Length: Approx. 0.75 miles

Blue Trail: 0.75 miles. Moderate Hike

Blue/Black Trail: 0.33 miles. Easy Walk



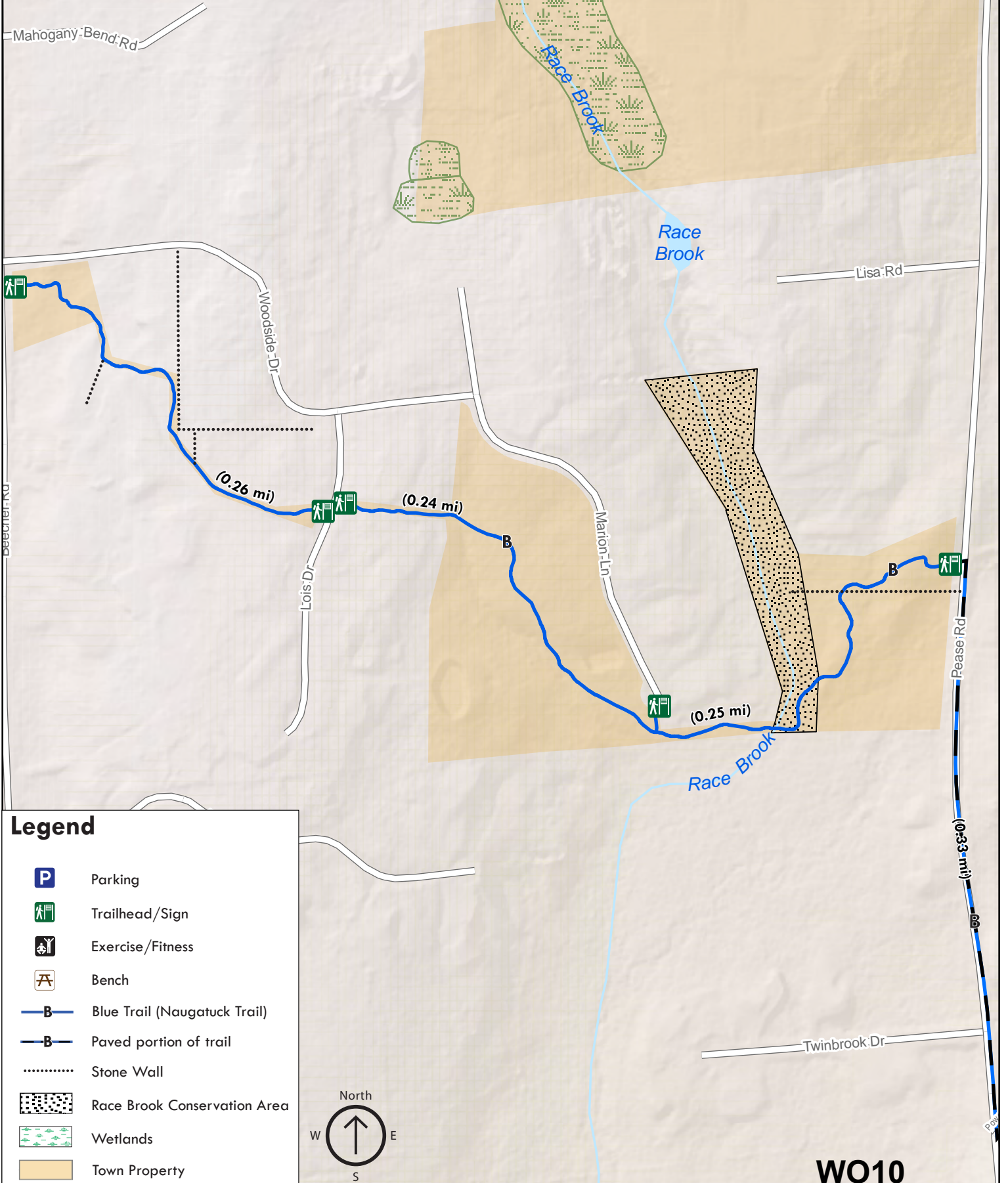
For more information about this location, contact:

Town of Woodbridge
(203) 389-3400

www.woodbridgect.org

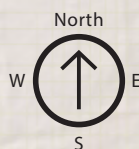


Racebrook Estates Blue Trail System



Legend

-  Parking
-  Trailhead/Sign
-  Exercise/Fitness
-  Bench
-  Blue Trail (Naugatuck Trail)
-  Paved portion of trail
-  Stone Wall
-  Race Brook Conservation Area
-  Wetlands
-  Town Property



WO10