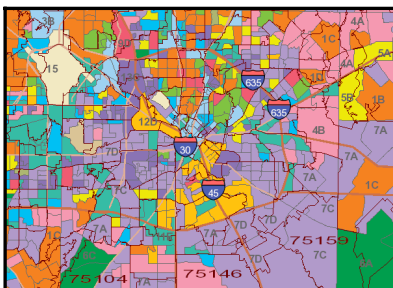
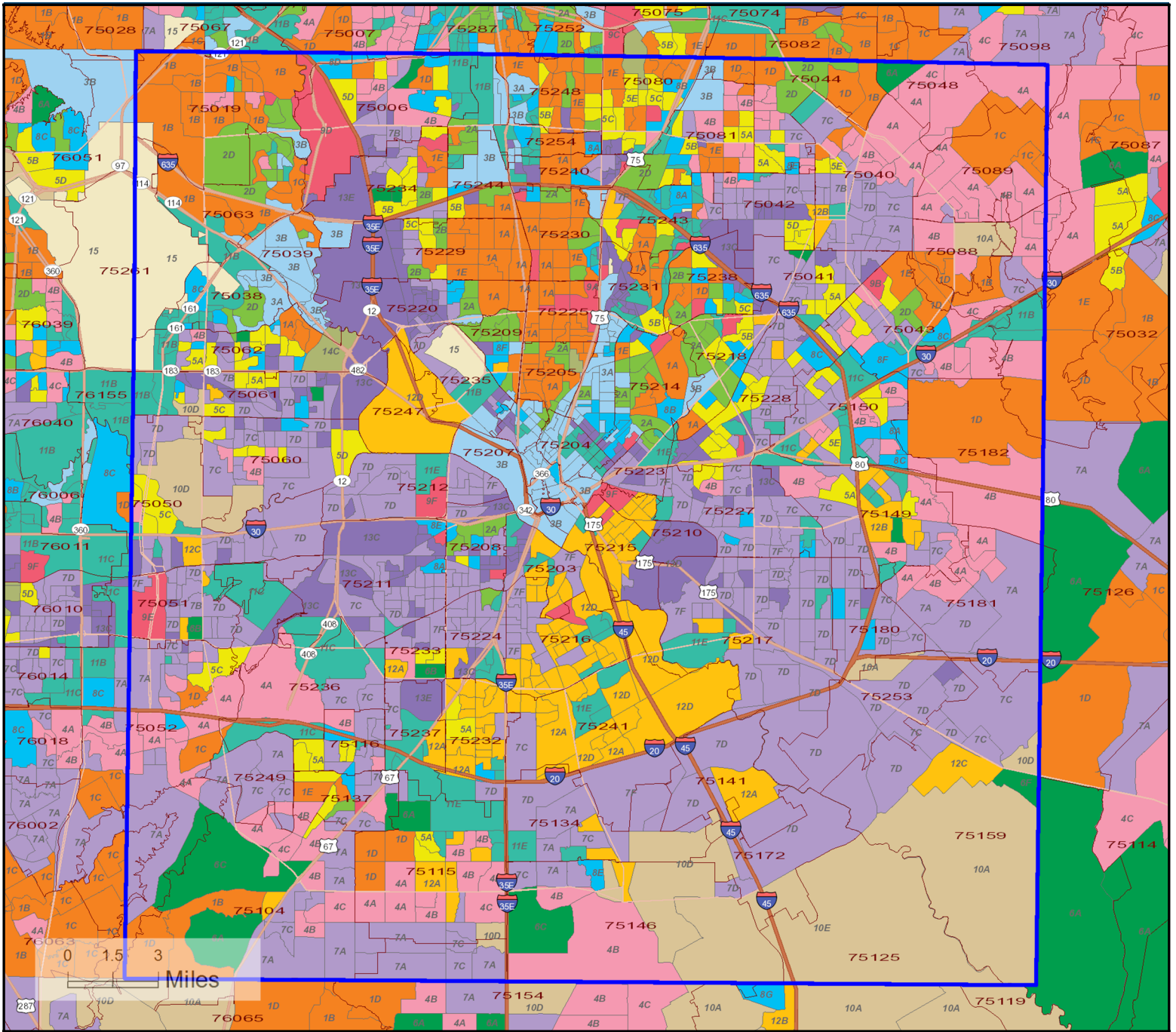




Dominant Tapestry Map

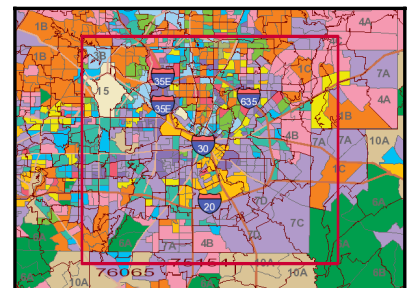
Dallas County, TX (48113)
Geography: County

Sample Report



Tapestry LifeMode

- L1: Affluent Estates
- L2: Upscale Avenues
- L3: Uptown Individuals
- L4: Family Landscapes
- L5: GenXurban
- L6: Cozy Country
- L7: Ethnic Enclaves
- L8: Middle Ground
- L9: Senior Styles
- L10: Rustic Outposts
- L11: Midtown Singles
- L12: Hometown
- L13: Next Wave
- L14: Scholars and Patriots



Source: Esri

April 16, 2015

Prepared by Esri



Tapestry Segmentation

Tapestry Segmentation represents the fifth generation of market segmentation systems that began 30 years ago. The 67-segment Tapestry Segmentation system classifies U.S. neighborhoods based on their socioeconomic and demographic composition. Each segment is identified by its two-digit Segment Code. Match the two-digit segment labels on the map to the list below. Click each segment below for a detailed description.

- | | |
|---|---|
| Segment 1A (Top Tier) | Segment 8C (Bright Young Professionals) |
| Segment 1B (Professional Pride) | Segment 8D (Downtown Melting Pot) |
| Segment 1C (Boomburbs) | Segment 8E (Front Porches) |
| Segment 1D (Savvy Suburbanites) | Segment 8F (Old and Newcomers) |
| Segment 1E (Exurbanites) | Segment 8G (Hardscrabble Road) |
| Segment 2A (Urban Chic) | Segment 9A (Silver & Gold) |
| Segment 2B (Pleasantville) | Segment 9B (Golden Years) |
| Segment 2C (Pacific Heights) | Segment 9C (The Elders) |
| Segment 2D (Enterprising Professionals) | Segment 9D (Senior Escapes) |
| Segment 3A (Laptops and Lattes) | Segment 9E (Retirement Communities) |
| Segment 3B (Metro Renters) | Segment 9F (Social Security Set) |
| Segment 3C (Trendsetters) | Segment 10A (Southern Satellites) |
| Segment 4A (Soccer Moms) | Segment 10B (Rooted Rural) |
| Segment 4B (Home Improvement) | Segment 10C (Diners & Miners) |
| Segment 4C (Middleburg) | Segment 10D (Down the Road) |
| Segment 5A (Comfortable Empty Nesters) | Segment 10E (Rural Bypasses) |
| Segment 5B (In Style) | Segment 11A (City Strivers) |
| Segment 5C (Parks and Rec) | Segment 11B (Young and Restless) |
| Segment 5D (Rustbelt Traditions) | Segment 11C (Metro Fusion) |
| Segment 5E (Midlife Constants) | Segment 11D (Set to Impress) |
| Segment 6A (Green Acres) | Segment 11E (City Commons) |
| Segment 6B (Salt of the Earth) | Segment 12A (Family Foundations) |
| Segment 6C (The Great Outdoors) | Segment 12B (Traditional Living) |
| Segment 6D (Prairie Living) | Segment 12C (Small Town Simplicity) |
| Segment 6E (Rural Resort Dwellers) | Segment 12D (Modest Income Homes) |
| Segment 6F (Heartland Communities) | Segment 13A (International Marketplace) |
| Segment 7A (Up and Coming Families) | Segment 13B (Las Casas) |
| Segment 7B (Urban Villages) | Segment 13C (NeWest Residents) |
| Segment 7C (American Dreamers) | Segment 13D (Fresh Ambitions) |
| Segment 7D (Barrios Urbanos) | Segment 13E (High Rise Renters) |
| Segment 7E (Valley Growers) | Segment 14A (Military Proximity) |
| Segment 7F (Southwestern Families) | Segment 14B (College Towns) |
| Segment 8A (City Lights) | Segment 14C (Dorms to Diplomas) |
| Segment 8B (Emerald City) | Segment 15 (Unclassified) |