

# **South Central Connecticut Region Plan of Conservation & Development 2018 Update**

---

Public Safety, Emergency Management, Public Utilities and Energy Conservation

July 20, 2017

# Introductions



# Purpose of Today's Meeting

- Supplement data analysis with qualitative understanding of regional trends in demographics, public safety, emergency management, public utilities and energy conservation
- Get your assistance in identifying issues and concerns
- Inform the Regional POCD Update process
  - Build consensus around a vision for the region, and corresponding goals and objectives for its physical and economic future
  - Recommend actions for SCRCOG to undertake over the coming decade to advance towards the region's vision

# Public Safety/Emergency Management

- DEMHS Region 2 and New Haven Area Special Hazards Team
- Local Emergency Operations Plans need to be updated every two years now (per 2015 legislation) and filed with DEMHS Regional Coordinator
- 2014 Natural Hazard Mitigation Plan beginning stages of update

[Connecticut Severe Winter Storm and Snowstorm \(DR-4213\)](#)

Incident period: January 26, 2015 to January 29, 2015

Major Disaster Declaration declared on April 08, 2015

[Connecticut Severe Winter Storm and Snowstorm \(DR-4106\)](#)

Incident period: February 08, 2013 to February 12, 2013

Major Disaster Declaration declared on March 21, 2013

[Connecticut Severe Winter Storm \(EM-3361\)](#)

Incident period: February 08, 2013 to February 12, 2013

Emergency Declaration declared on February 10, 2013

[Connecticut Hurricane Sandy \(DR-4087\)](#)

Incident period: October 27, 2012 to November 08, 2012

Major Disaster Declaration declared on October 30, 2012

[Connecticut Hurricane Sandy \(EM-3353\)](#)

Incident period: October 27, 2012 to November 08, 2012

Emergency Declaration declared on October 28, 2012

[Connecticut Severe Storm \(DR-4046\)](#)

Incident period: October 29, 2011 to October 30, 2011

Major Disaster Declaration declared on November 17, 2011

[Connecticut Severe Storm \(EM-3342\)](#)

Incident period: October 29, 2011 to October 30, 2011

Emergency Declaration declared on October 31, 2011

[Connecticut Tropical Storm Irene \(DR-4023\)](#)

Incident period: August 27, 2011 to September 01, 2011

Major Disaster Declaration declared on September 02, 2011

[Connecticut Hurricane Irene \(EM-3331\)](#)

Incident period: August 26, 2011 to September 01, 2011

Emergency Declaration declared on August 27, 2011

[Connecticut Snowstorm \(DR-1958\)](#)

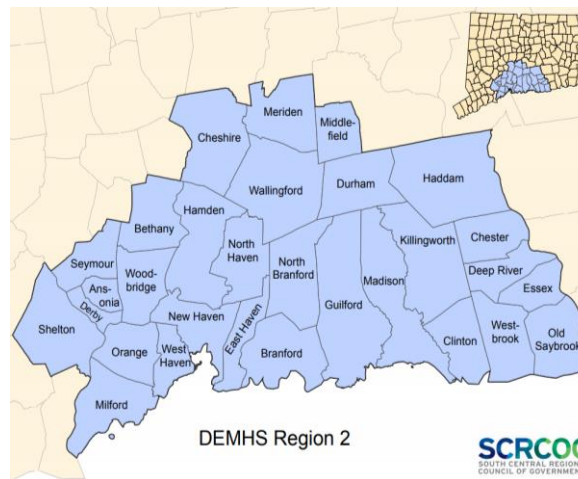
Incident period: January 11, 2011 to January 12, 2011

Major Disaster Declaration declared on March 03, 2011

[Connecticut Severe Storms and Flooding \(DR-1904\)](#)

Incident period: March 12, 2010 to May 17, 2010

Major Disaster Declaration declared on April 23, 2010



# Public Safety/Emergency Management

Strategies from current plan

- Update and refine emergency plans
- Support funding efforts to adequately respond to public safety crisis or natural hazard
- Support additional GIS functionality



*New Haven following Superstorm Sandy in 2012  
Source: New Haven Register*

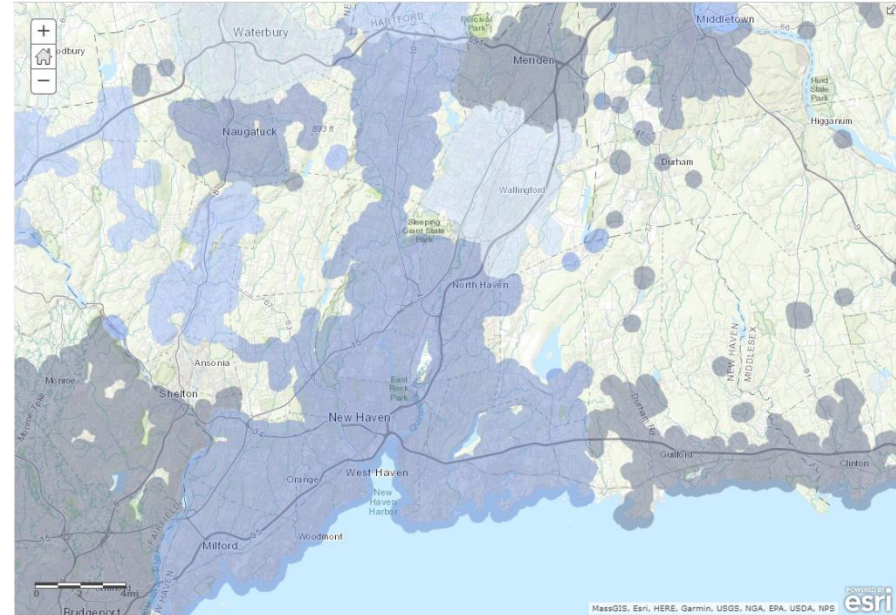
# Public Utilities

## Water

- The RWA serves the majority of the Region and is one of the largest property owners (+20K Acres)
- RWA currently has an excess capacity of 15 million gallons of water per day
- Municipal water providers in Meriden and Wallingford

## Sewer

- A large portion of the area is currently covered by sewer services
- Communities with limited or no sewer service: Bethany, Guilford, Madison, North Branford, Orange and Woodbridge



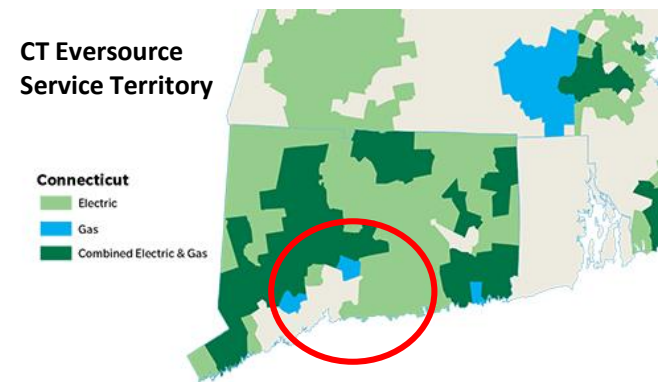
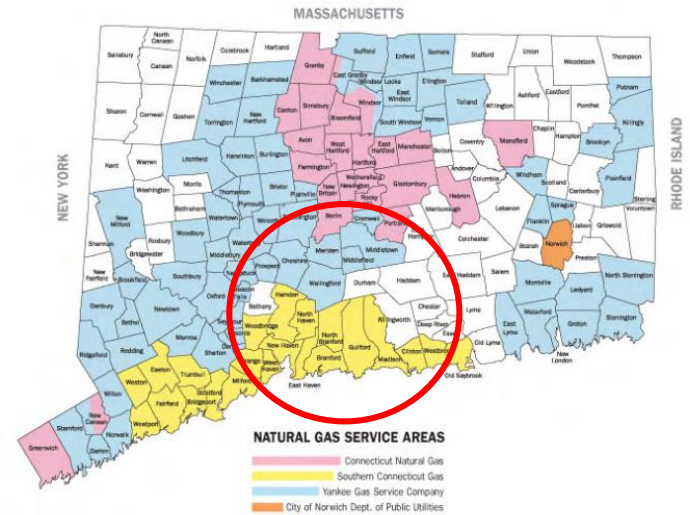
*Public Water Supply Service Areas*

*Source: CT DPH*



# Public Utilities

- **Energy**– Madison, Guilford, Bethany, Branford & Meriden Serviced by Eversource, Wallingford Serviced by Municipal-Owned Power, Remaining Communities Serviced by UI.
- **Natural Gas** Major energy providers have made significant progress with 2013 CEDS objectives, converting 58,000 heating customers to natural gas over three years
- **Broadband** – According to the FCC, CT ranked #2 for Broadband Speed
  - 97% of the population have access to DSL
- **Waste Management** - The State's current recycling rate is approximately 30%
  - All towns in the region have adopted recycling programs since last POCD in 2008
  - The State of CT has a goal of 60% Diversion (2005 outputs as a baseline) by 2024

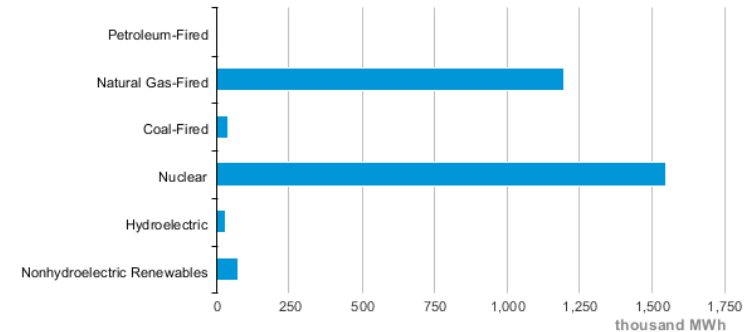


Source: Eversource.com

# Energy Conservation

- In 2015 approximately 981,000 households and 6,200 businesses took part in energy efficiency measures resulting in \$1 Billion dollars in lifetime savings for consumers
- North Haven and Woodbridge were awarded a Green Circle Award by DEEP for their efforts to reduce energy consumption
- United Illuminating is now a part of a larger national energy company AVANGRID and actively involved in efforts to integrate new renewable or distributed energy into the regional electric distribution system.

Connecticut Net Electricity Generation by Source, Mar. 2017



eia Source: Energy Information Administration, Electric Power Monthly





# Renewable Energy

- **Woodbridge Fuel Cell** – Installed at Amity High School and generates 2.2 megawatts of power and usable heat to the grid and switches to a micro grid during power outages to power town facilities
- **Meriden Landfill Solar** – 4,000 Solar Panels using a setup that allows for installation on landfills. To date the property yields enough energy to power 150 homes
- **Wallingford** – The Lend Lease Company has received approval from the DEEP to construct a 19.99-megawatt solar installation
- **North Haven** - Partnered with Smart Power to run an 18 week campaign to install solar panels at a reduced cost Resulting in 20 contracts which generate 195kW of solar to be installed
  - North Haven has since received \$30,000 in EnergizeCT Bright Idea grants used to



Source: DCEsloar.com

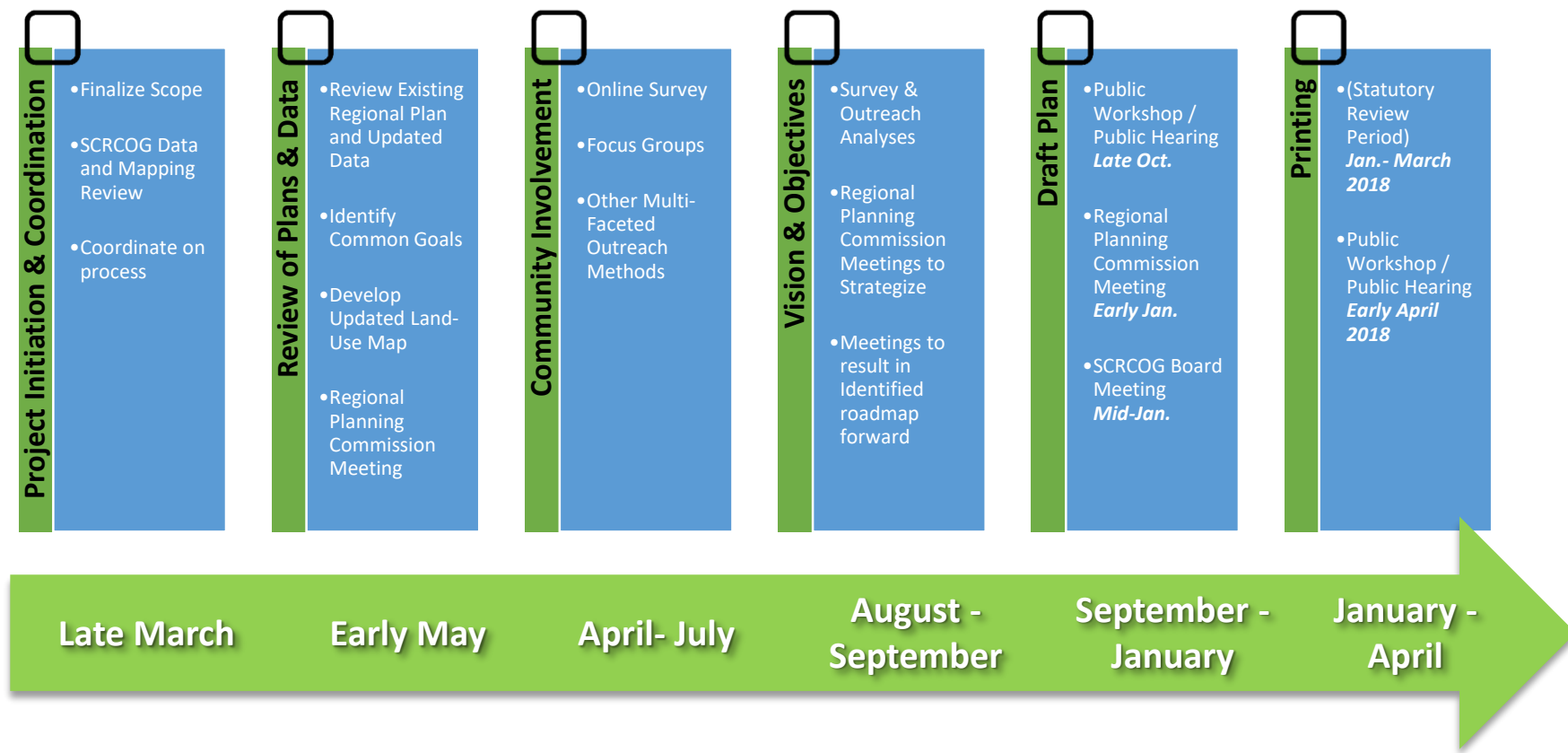


Source: NH Register

# Discussion

- Are your communities running into any issues in coordinating and sharing in emergency preparedness, or in responding to emergencies? Any role for SCRCOG to play in facilitating regional collaboration?
- How is your community planning for climate change and/or sea level rise?
- Does your community have any concerns with utility capacities to accommodate existing or planned future development?
- What are some steps your community has taken to conserve energy?
- How is your community planning for renewable energy?

# POCD Update Process



# Thank you!

If you have additional information or comments you or your organization want to share, please get in touch with:

Eugene Livshits – SCRCOG

[elivshits@scrcog.org](mailto:elivshits@scrcog.org)

Rebecca Augur - Milone & MacBroom, Inc.

[raugur@mminc.com](mailto:raugur@mminc.com)