



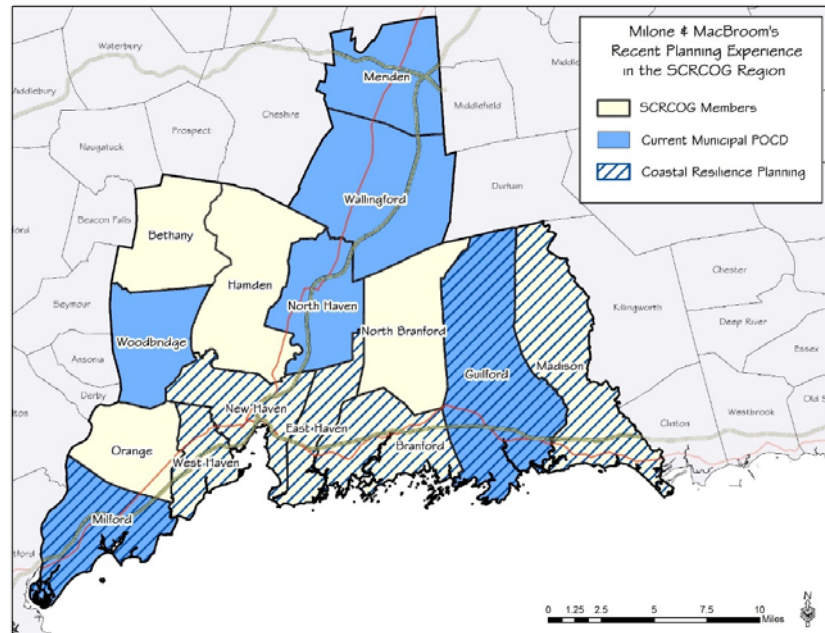
South Central Connecticut Region Plan of Conservation & Development 2018 Update

Regional Planning Commission Kick-Off

May 11, 2017

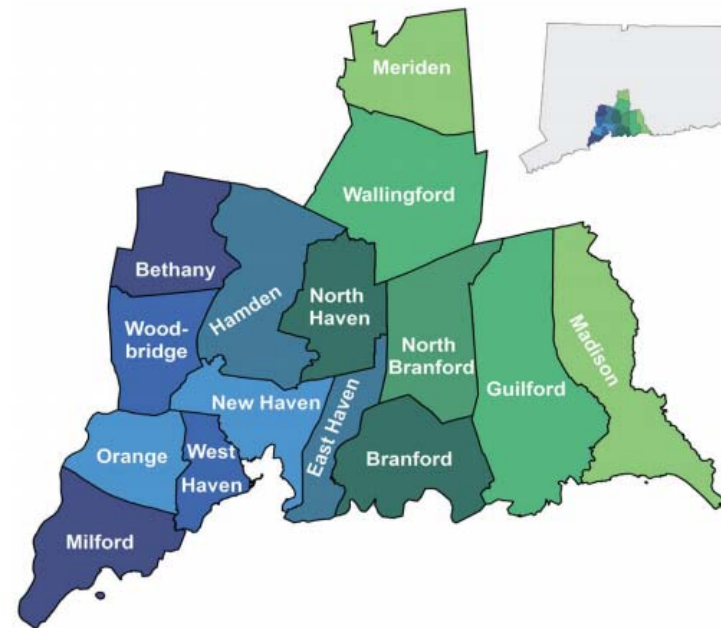
Introductions

- Milone & MacBroom
- RPC
- SCRCOG

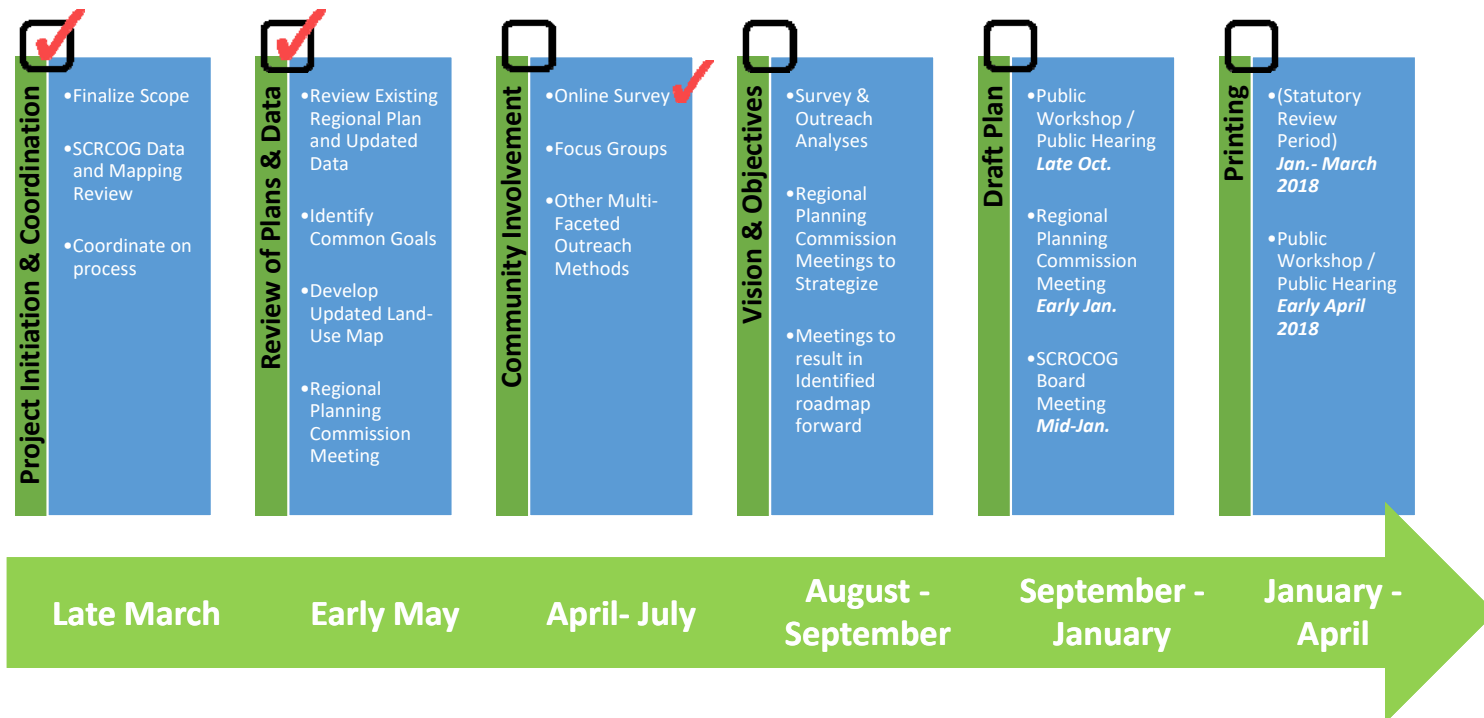


Agenda

- POCD Update Process
- Legal Changes Over Last Decade
- Existing Plan Review
- Local POCD Review
- Changing Demographics
- Next Steps



POCD Update Process



Changes in Planning Environment

State's 2013-18 Conservation and Development Policies Plan

- State's 2013-18 Conservation and Development Policies Plan developed new standards around Priority Funding Areas
- P.A. 16-144 requires regional POCDs to consider need for technology infrastructure
- State's 2018-2023 Plan in process of being updated
 - Minimal changes expected
 - Public hearings through this summer
 - Draft by end of year

Writing the Next Chapter: 2018-2023 State Plan of Conservation and Development

PUBLIC WORKSHOP AND OPEN DISCUSSION

DECEMBER 6, 2016
SOUTH CENTRAL REGIONAL COUNCIL OF GOVERNMENTS (SCRCOG)
NORTH HAVEN, CONNECTICUT

Existing Plan Review

Goals

Land Use

- Focus development in existing corridors and centers while conserving open space

Housing

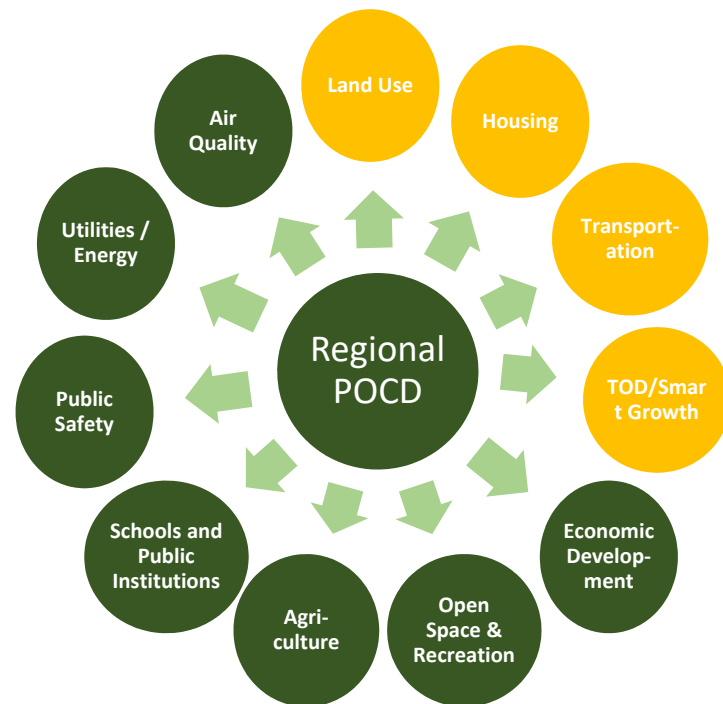
- Promote affordable housing and diverse housing choices for all incomes and age groups

Transportation

- Preserve and enhance transportation modes/connections
- Increase transportation funding
- Regional solutions to access/congestion issues
- Link transportation with land use
- Address aging infrastructure

Transit-Oriented Development/Smart Growth

- Guide density to areas with adequate infrastructure; protect environmentally sensitive land, and encourage clustering in moderate-to-low density areas



Existing Plan Review

Goals

Economic Development

- Regional marketing and communication strategy
- Develop and maintain transportation network
- Capitalizing on regional strengths for business development
- Workforce housing
- Integrate land use planning with economic development

Open Space and Recreation

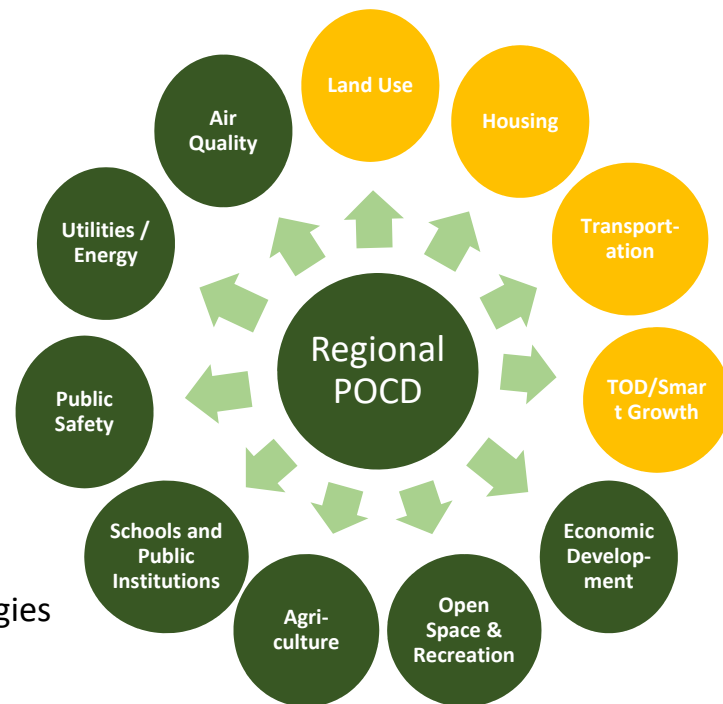
- Fully diversify public open space and recreation
- Create connections between open spaces
- Promote regional critical habitats protection

Agriculture

- Preserve farms through acquisition, transfer of development rights
- Develop historic preservation and marketing strategies that promote farms through awareness and agri-tourism

Schools and Public Institutions

- Maintain attractive and inclusive education systems and cultural institutions



Existing Plan Review

Goals

Public Safety

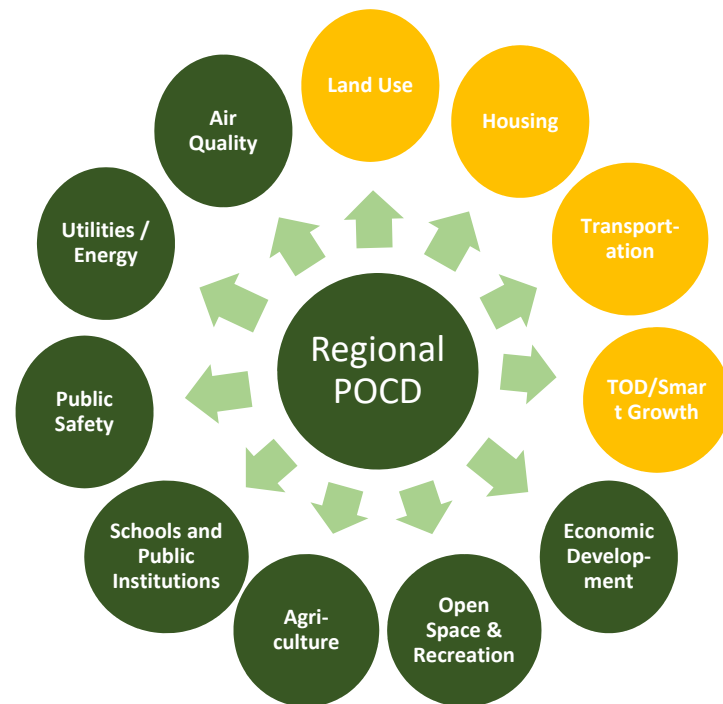
- Regional collaboration to respond to public safety issues and natural hazards

Utilities / Energy

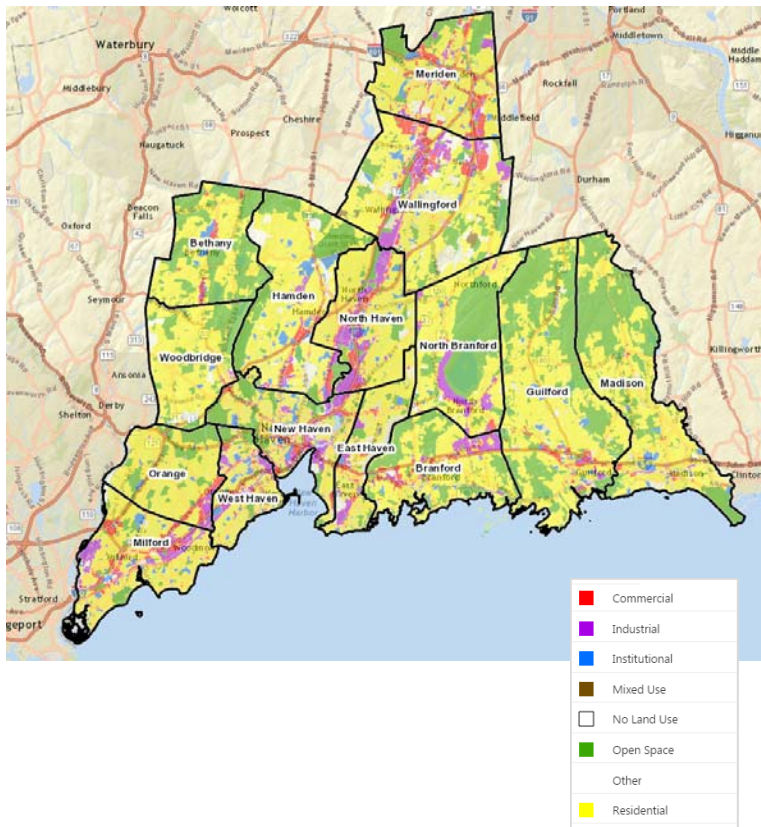
- To reduce Infrastructure costs focus on infill, corridor and brownfield development
- Limit development in upland remote locations
- Reduce energy consumption

Air Quality / Long Island Sound

- Reduce region's green house gases
- Protect and restore Long Island Sound and its watersheds



Local POCD Review



Town	Effective Date
Bethany	10/30/2010
Branford	12/15/2008
East Haven	09/05/2007
Guilford	07/15/2015
Hamden	01/28/2015
Madison	11/9/2013
Meriden	03/14/2009
Milford	12/01/2012
New Haven	09/01/2015
North Branford	12/21/2019
North Haven	01/17/2017
Orange	06/27/2015
Wallingford	06/13/2016
West Haven	08/01/2004
Woodbridge	05/01/2015

POCD Vision Statements/Priorities

Bethany	Preserve open space/rural character, encourage development that minimizes impact on environment
Branford	Protect the physical environment and manage growth to preserve town's heritage and character
East Haven	Recognize town as a shoreline community and design development accordingly. Promote diverse housing choices while protecting open space
Guilford	Promote multi-modal transportation network. Support higher density development. Encourage affordable housing
Hamden	Preserve community character, foster inclusive neighborhoods, encourage infill development
Madison	Guide the conservation and development of Madison to maintain and enhance its character and quality of life and help create a sustainable and resilient community
Meriden	Be a dynamic regional commercial and service hub, capitalizing on city's central location. Conservation and development should be balanced by land conservation, and neighborhood/business development

POCD Vision Statements/Priorities

Milford	Preserve open space, promote commercial corridors and infrastructure improvements including transportation networks. Encourage TOD and plan for climate change
New Haven	Encourage affordable and diverse housing, connect community through a multi-modal transportation network, adapt to climate change and sea level rise
North Branford	Encourage development in line with market trends. Protect natural resources/open space. Improve transportation network
North Haven	Enhance access to open space, promote affordable housing. Work regionally to share resources, promote sustainable development around transportation networks
Orange	Protect community character, promote conservation through design, encourage well-planned development
Wallingford	Promote town center development, transportation connections and protect community character
West Haven	Shape the city into a more vibrant, connected and livable community for residents of all ages. Foster an environment that is attractive to businesses and residents alike
Woodbridge	Focus developments in town nodes, include affordable housing. Promote corridor improvement, build on previous successful development patterns

Changing Demographics

Slowing Growth

- At 570,596 an estimated .10% increase in population between 2010-2015, slower than the state (.54%) and the Country (2.52%)

Aging

- Average age is 39.7, up from 36.80 in 2000

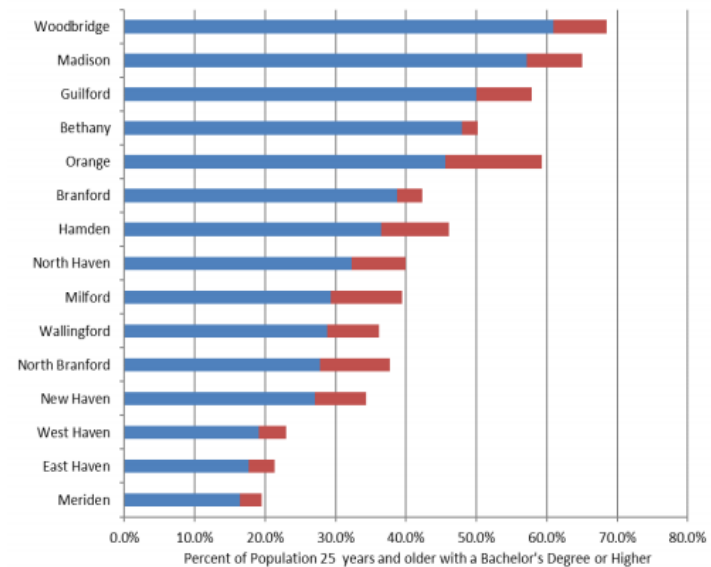
Out-Migration

- Out migration consistently surpassed in-migration from 2005-2015

More Educated

- In 2015 the Region has increased higher education rates by an average of 7% over 2000 figures for those age 25+

Figure 3.3: Percent of the Population 25 Years and Older with a Bachelor's Degree or Higher, 2015



Source: U.S. Census Bureau, Census 2000 (SF-3) and 2011-2015 American Community Survey 5-Year Estimates (Table B15002)

■ 2000
■ Increase 2000-2015

Changing Demographics

Median and Per Capita Incomes (2015)

Household Income

- Highest: Woodbridge
- Lowest: New Haven
- State average: \$70,331

Per Capita Income

- Highest: Woodbridge
- Lowest: New Haven
- State average: \$38,930

Labor Force

- Labor force has remained fairly stable with only slight decreases since 2010

Table 6.1: Median Household Income by Municipality, 2015

Bethany	Branford	East Haven	Guilford	Hamden
\$ 97,254	\$ 71,938	\$ 63,120	\$ 99,132	\$ 70,791
Madison	Meriden	Milford	New Haven	North Branford
\$ 107,183	\$ 54,588	\$ 80,247	\$ 37,192	\$ 84,697
North Haven	Orange	Wallingford	West Haven	Woodbridge
\$ 86,340	\$ 107,047	\$ 74,060	\$ 50,846	\$ 133,412

Source: U.S. Census Bureau, 2011- 2015 American Community Survey 5-Year Estimates (Table B19013)

Table 6.2: Per Capita Income by Municipality, 2015

Bethany	Branford	East Haven	Guilford	Hamden
\$ 42,397	\$ 44,043	\$ 31,781	\$ 52,071	\$ 34,907
Madison	Meriden	Milford	New Haven	North Branford
\$ 52,413	\$ 28,601	\$ 40,616	\$ 23,527	\$ 41,661
North Haven	Orange	Wallingford	West Haven	Woodbridge
\$ 38,137	\$ 49,776	\$ 38,067	\$ 26,143	\$ 58,594

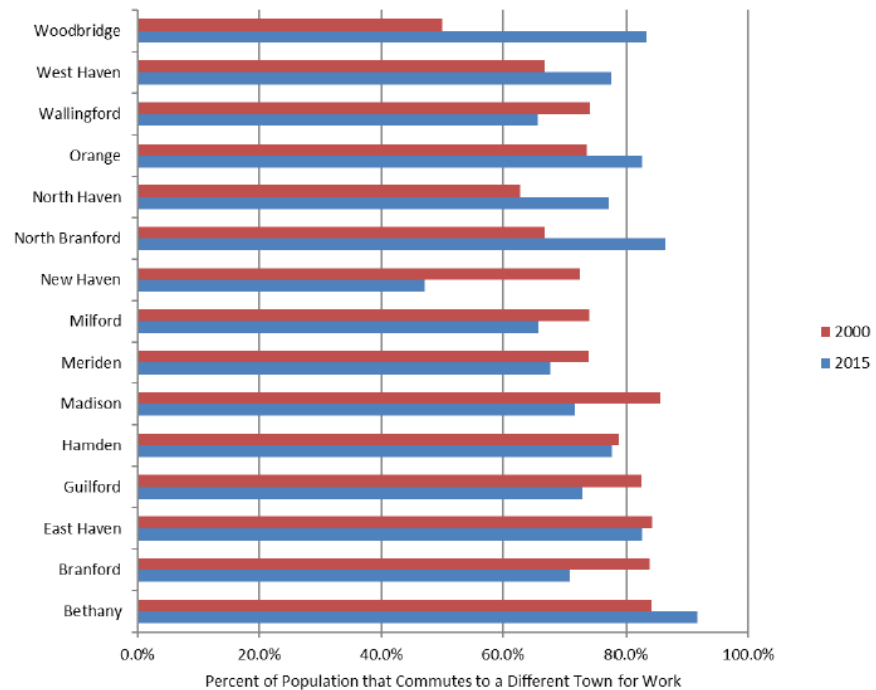
Source: American Community Survey 2011-2015 American Community Survey 5-Year Estimates (Table DP03)

Changing Demographics

Figure 5.3: Percent of Population that Commutes to a Different Municipality for Work, 2000 & 2015

Commuting Patterns

- 76% of workers in the region drove to work alone in 2015
- An average of 5.3% of residents used public transportation
- 75% of Region's population commutes to a different town for work in 2015 – some communities experienced significant increase in since 2000 while others experienced decrease



Source: U.S. Census Bureau, Census 2000 Summary File 3 (Table P029) and 2011-2015 American Community Survey 5-Year Estimates (Table B08009)

Next Steps

- Take the municipal survey!
- Encourage your staff and fellow commission members to take it – your job is easier with good input

https://www.surveymonkey.com/r/Municipal_SCRCOG

- Focus group discussions with invited groups to facilitate deeper dive into trends, issues and goals around:
 - Demographics, Housing, Schools and Institutions
 - Economic Development, TOD and Smart Growth and Transportation
 - Agriculture, Natural Resources, Open Space, Recreation and Hazard mitigation
 - Public Safety, Emergency Management, Public Utilities, and Energy Conservation
 - Municipal Planning

Questions?