

Advisory Committee Meeting

June 21, 2017

South Central Regional Multi-Jurisdiction Hazard Mitigation Plan Update

1

AGENDA

- Introductions and Binders
- Project Introduction
- Planning Process in Detail
- Next Steps

JAMIE CAPLAN CONSULTING LLC
Emergency Management Services

2


PROJECT TEAM

JAMIE CAPLAN CONSULTING LLC
Emergency Management Services

3

PROJECT INTRODUCTION

- Update for FEMA compliance
 - Reflect current development
 - Changes in capability
 - Mitigation project implementation
 - Updated data
- Add 4 Municipalities
 1. East Haven
 2. Guilford
 3. Milford
 4. New Haven
- 14 Municipalities – 1 Plan



SCRCO SOUTH CENTRAL REGION MULTI-JURISDICTION HAZARD MITIGATION PLAN OCTOBER 2015

JAMIE CAPLAN CONSULTING LLC
Emergency Management Services

4

MITIGATION AND MITIGATION PLANNING

Hazard Mitigation
Any action taken to reduce or eliminate long-term risk to life and property from hazards.

Mitigation Planning

- Engage the community and key stakeholders
- Assess hazard risks and mitigation capabilities
- Identify mitigation actions that lead to long-term risk reduction
- Implement and maintain the plan

- Hazard Mitigation Plans form the foundation for a community's long-term strategy to reduce disaster losses and break the cycle of disaster damage, reconstruction, and repeated damage. The planning process is as important as the plan itself. It creates a framework for risk-based decision making to reduce damages to lives, property, and the economy from future disasters.

JAMIE CAPLAN CONSULTING LLC
Emergency Management Services

5

BENEFITS OF MITIGATION PLANNING

- Identify hazards and prioritize risk reduction efforts
- Increase public awareness of hazards
- Build partnerships between jurisdictions
- Align risk reduction with other community objectives
- Become eligible for State and Federal funding
- Speed recovery following disaster events
- Maximize credit points under the National Flood Insurance Program's Community Rating System (CRS)

JAMIE CAPLAN CONSULTING LLC
Emergency Management Services

6

BENEFITS AND CHALLENGES OF PLAN UPDATE

- Regional plan achieves economies of scale.
- Including 14 municipality specifics is a challenge.
- Our solution
 - Confer with FEMA and CT Dept. of Emergency Services & Public Protection for their expectations.
 - Work with individual municipalities to gather data.
- Your thoughts...

JAMIE CAPLAN CONSULTING LLC
Emergency Management Services

7

TIMELINE

Tasks and Deliverables	2017												2018					
	May	Jun	Jul	Aug	Sep	Oct	Nov	Dec	Jan	Feb	Mar	Apr	May	Jun	Jul	Aug	Sep	Oct
Task 1: Planning Process																		
Advisory Committee Meetings		✓							✓									
Municipality Meetings			✓	✓														
Public Workshops						✓			✓									
Task 2: Risk Assessment																		
Draft Risk Assessment						✓												
Task 3: Capability Assessment																		
Draft Capability Assessment						✓												
Task 4: Hazard Mitigation Strategy																		
Draft Mitigation Strategy								✓										
Task 5: Plan Maintenance Process																		
Draft Plan Maintenance Process									✓									
Task 6: Adoption and Approval																		
Municipal and Public Review and Revisions										✓								
Final Draft of RMP Update for CT DESPP Review and Revision											✓	✓						
Final Draft of RMP Update for FEMA Review and Approval													✓	✓				

JAMIE CAPLAN CONSULTING LLC
Emergency Management Services

8

PLANNING PROCESS IN DETAIL

Key Project Tasks:

1. Planning Process
2. Risk Assessment
3. Capability Assessment
4. Hazard Mitigation Strategy
5. Plan Maintenance Process
6. Adoption and Approval

JAMIE CAPLAN CONSULTING LLC
Emergency Management Services

9

ROLE OF THE ADVISORY COMMITTEE

- Help guide and inform plan development
- Attend 4 committee meetings
- Provide supporting data/information upon request
- Assist in the evaluation and prioritization of mitigation actions
- Review and comment on draft plan deliverables
- Approve final draft plan prior to submission to CT Dept. of Emergency Services & Public Protection and FEMA
- Public outreach and engagement – help spread the word!

JAMIE CAPLAN CONSULTING LLC
Emergency Management Services

10

PUBLIC OUTREACH AND STAKEHOLDER ENGAGEMENT

- To generate public interest, solicit citizen input, and engage additional partners in the plan development process
 - Advisory Committee
 - Municipality Meetings
 - Public Outreach
 - Project Fact Sheet
 - Public Meetings
 - Public Opinion Survey
 - Media Releases
- Public outreach and stakeholder engagement is essential to project success!

Project Website <http://scrcog.org/regional-planning/regional-hazard-mitigation/>

JAMIE CAPLAN CONSULTING LLC
Emergency Management Services

11

MUNICIPALITY MEETINGS PURPOSE

- Gather municipality specific data
 - Critical facility identification
 - Capability assessment information
 - New mitigation actions
- Advisory Committee member responsible for logistics

LIST OF POTENTIAL PARTNERS TO INVOLVE IN A LOCAL HAZARD MITIGATION PLAN


LOCAL AGENCIES	OTHER GOVERNMENT AGENCIES
<ul style="list-style-type: none"> • Planning Dept. (Hazard Mitigation) • Fire Department • Police Department • Public Works Department • Emergency Management Services • Emergency Management Committee • State Police • Department of Transportation • Department of Health and Human Services • Department of Social Services • Department of Education • Department of Public Safety 	<ul style="list-style-type: none"> • Federal Emergency Management Agency • National Guard • National Highway Traffic Safety Administration • National Oceanic and Atmospheric Administration • National Transportation Safety Board • National Weather Service • State Department • State Police • State Department of Transportation • State Department of Health and Human Services • State Department of Social Services • State Department of Education • State Department of Public Safety

JAMIE CAPLAN CONSULTING LLC
Emergency Management Services

12

PUBLIC MEETINGS

- Education
- Ground-truthing
- FEMA requirements
- Support for future mitigation actions



PUBLIC WORKSHOPS
South South Central Region Hazard Mitigation Plan for
Bridgewater, Haverhill, Hingham, Middlesex, North Haverhill, North Hingham,
Orange, Wallingford, West Haverhill, and Westford

The South Central Regional Council of Governments (SCRCOG) is hosting four public workshops to review and discuss the Draft South Central Region Hazard Mitigation Plan. The purpose of the plan is to reduce the Region's vulnerability to natural hazards. These workshops are an opportunity for the public to learn a presentation of the Draft Plan and to ask questions and provide feedback.

The Public Workshops will be held:

April 25, 2013 at 6:00 PM - North Hingham Memorial Library, 17 Elm Street, North Hingham, CT 06017
 May 6, 2013 at 6:00 PM - West Haverhill City Hall, Conf. Rm. B, 101 Main Street, West Haverhill, CT 06016
 May 20, 2013 at 6:00 PM - Bridgewater Fire Department, 45 North Main Street, Bridgewater, CT 06007
 May 23, 2013 at 6:00 PM - Middlesex Senior Center, 21 Bradley Road, Middlesex, CT 06042

Visit our website www.scrcog.org for more details.

JAMIE CAPLAN CONSULTING LLC
Emergency Management Services


13

PUBLIC SURVEY

Irene, Sandy, Athena... What's Next?
Help Make Madison Less Vulnerable to Disasters

The South Central Regional Council of Governments (SCRCOG) wants your input for developing a multi-jurisdiction hazard mitigation plan to reduce and minimize losses and injuries before they happen.

Posted by Nicole Bell, November 12, 2013 at 12:22 pm
1 Comment



Officials from Madison spent countless hours preparing the town for Sandy's arrival. Following the storm, they put in

How important are the following specific community assets to you?
(Check the appropriate circle for each asset)


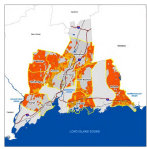
Asset	Very Important	Important	Not Important
Police Department	100	100	100
Fire Department	100	100	100
Public Works Department	100	100	100
Health Department	100	100	100
Senior Center	100	100	100
Elementary School	100	100	100
High School	100	100	100
College/University	100	100	100
City Hall/Courthouse	100	100	100
All Other Properties	100	100	100

JAMIE CAPLAN CONSULTING LLC
Emergency Management Services

14

RISK ASSESSMENT – 2014 APPROACH

- Approach in the 2014 Plan**
 - Hazards were profiled from existing information, prior State hazard mitigation plan editions, and through workshops with the municipalities
 - HAZUS Version 2.1 (with 2000 Census data) was used to estimate losses for hurricane winds, floods, and earthquakes
 - National Climate Data Center (NCDC) database of events was used to estimate losses from other hazards such as severe thunderstorms and winter storms
 - Critical facilities, vulnerable populations, historic resources, and other community assets were described, mapped and included in the exposure analysis where possible
 - Specific “problem statements” were created for each jurisdiction
 - **All of this information is useful and provides the foundation for the update**

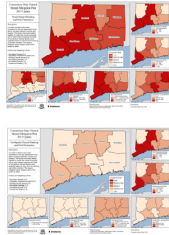



JAMIE CAPLAN CONSULTING LLC
Emergency Management Services

15

RISK ASSESSMENT – ADDITIONAL ANALYSIS

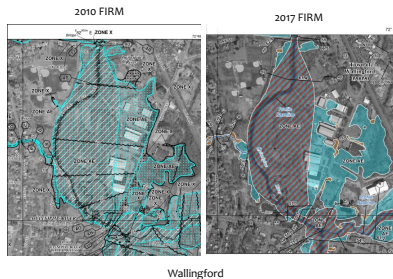
- **Approach for Additional Analysis in Updated Plan**
- The list of hazards will be the same
- Hazard profiles will be similar but updated for new information
- This SCRCOG plan update will allow for the first time consideration of risk profiles and loss estimates in the Connecticut Hazard Mitigation Plan Update (2014), which was a significant update relative to the 2010 edition of the Connecticut Hazard Mitigation Plan
 - DEMSH will at the very least require consistency



JAMIE CAPLAN CONSULTING LLC
Emergency Management Services

RISK ASSESSMENT – ADDITIONAL ANALYSIS**Approach for Additional Analysis in Updated Plan**

- Consideration of changes associated with the new Flood Insurance Study (FIS) and FIRM for Quinnipiac River and south-central Connecticut



JAMIE CAPLAN CONSULTING LLC
Emergency Management Services

RISK ASSESSMENT – HAZUS

- **Approach for Additional Analysis in Updated Plan**
 - National Climate Data Center (NCDC) updated database of events
 - Updated lists of Repetitive Loss (RL) and Severe Repetitive Loss (SRL) properties
 - Consideration of the two disasters declared since the initial plan (2013 and 2015)
 - HAZUS Version 4.0 with 2010 Census Data



JAMIE CAPLAN CONSULTING LLC
Emergency Management Services

JAMIE CAPLAN CONSULTING LLC
Emergency Management Services

20

JAMIE CAPLAN CONSULTING LLC
Emergency Management Services

MITIGATION STRATEGY

- Long-term blueprint for reducing the potential losses identified in the risk assessment.
- The strategy describes how the municipalities will accomplish the overall mission of the mitigation plan.
- Mission Statement
 - Reduce or eliminate risk to people and property from natural hazards.

JAMIE CAPLAN CONSULTING LLC
Emergency Management Services

22

2014 Mitigation Plan Goals

Goal Categories	Mitigation Plan Goals
Community Planning	1. Reduce the impact of natural hazards by integrating natural hazard mitigation policies and practices into local community planning.
Flood Hazards	2. Minimize flood hazards in the region by maintaining continued compliance with the National Flood Insurance Program, adopting higher regulatory standards for new floodplain development, and implementing flood mitigation projects for existing flood prone structures.
Trees	3. Limit the impact of fallen trees due to natural hazards by collaborating with electric utility companies and property owners (private and public) to cut limbs and remove hazardous trees that pose threats to buildings, infrastructure and utility lifelines.
Regional Collaboration	4. Build capacity for natural hazard mitigation and climate adaptation at the local level through regional collaboration.
Public Awareness and Preparedness	5. Increase public awareness and preparedness for natural hazards by implementing community-based public education programs across the region.

JAMIE CAPLAN CONSULTING LLC
Emergency Management Services

23

WORK DONE TO DATE

- Mitigation plan worksheets and mitigation plan progress report.
- Collect a current update.
- Review other plans that identify mitigation actions.

Table 1.000 Mitigation Worksheet

Category	Item	Responsible Party	Status
Mitigation Plan	Develop Mitigation Plan	Advisory Committee	In Progress
	Conduct Risk Assessment	Advisory Committee	Completed
	Develop Mitigation Strategy	Advisory Committee	In Progress
	Develop Mitigation Plan	Advisory Committee	In Progress
	Develop Mitigation Plan	Advisory Committee	In Progress
	Develop Mitigation Plan	Advisory Committee	In Progress
	Develop Mitigation Plan	Advisory Committee	In Progress
	Develop Mitigation Plan	Advisory Committee	In Progress
	Develop Mitigation Plan	Advisory Committee	In Progress
	Develop Mitigation Plan	Advisory Committee	In Progress
Mitigation Plan Progress Report	Develop Mitigation Plan Progress Report	Advisory Committee	In Progress
	Develop Mitigation Plan Progress Report	Advisory Committee	In Progress
	Develop Mitigation Plan Progress Report	Advisory Committee	In Progress
	Develop Mitigation Plan Progress Report	Advisory Committee	In Progress
	Develop Mitigation Plan Progress Report	Advisory Committee	In Progress
	Develop Mitigation Plan Progress Report	Advisory Committee	In Progress
	Develop Mitigation Plan Progress Report	Advisory Committee	In Progress
	Develop Mitigation Plan Progress Report	Advisory Committee	In Progress
	Develop Mitigation Plan Progress Report	Advisory Committee	In Progress
	Develop Mitigation Plan Progress Report	Advisory Committee	In Progress

JAMIE CAPLAN CONSULTING LLC
Emergency Management Services

24

MITIGATION ACTIONS

1. Local Planning and Regulations
2. Structure and Infrastructure Projects
3. Natural Systems Protection
4. Education and Awareness Programs



JAMIE CAPLAN CONSULTING LLC
Emergency Management Services

NEXT STEPS

- Municipality Meetings
 - Schedule
 - Outreach to potential participants
- Next Advisory Committee Meeting



JAMIE CAPLAN CONSULTING LLC
Emergency Management Services

26

THANK YOU

- Jamie Caplan, Jamie Caplan Consulting, LLC
 - 413-586-0867
 - jamie@jamiecaplan.com
- David Murphy, Milone & MacBroom
 - 203-271-1773
 - davem@miloneandmacbroom.com
- Darrin Punchard, Punchard Consulting LLC
 - 617-777-2001
 - darrin@punchardconsulting.com

JAMIE CAPLAN CONSULTING LLC
Emergency Management Services

27
