

Naugatuck State Forest: Mt. Sanford Block

The Naugatuck State Forest covers almost 5,000 acres and is spread across Naugatuck, Beacon Falls, Oxford, Bethany, Hamden, Cheshire, Ansonia, and Seymour. It is organized into five Blocks, named West, East, Mt. Sanford, Quillinan Reservoir, and Great Hill.

The Forest originated with Harris Whittemore, an industrialist and member of the State Forest and Park Commission. In 1921, Mr. Whittemore began buying parcels of land in the Naugatuck Valley, intending to donate them to the State. Unfortunately, he did not live long enough to realize his dream, but after his death in 1928, his family continued to acquire land, and in 1931, almost 2,000 acres were donated in his memory.

Naugatuck State Forest is used for fishing, hiking, hunting, target shooting, snowmobiling, cross country skiing, mountain biking, climbing, geocaching and trail running. The forest is crossed by several Blue-Blazed Trails including the Quinnipiac Trail and Naugatuck Trail (including the Whittemore spur). Mountain biking trails include fire roads in the various blocks, as well as several miles of singletrack trail in the Quillinan Block that were created in cooperation of the DEEP State Forester's office, the New England Mountain Bike Association (NEMBA), and Thule Corporation.



Photo by Jim, A Walk Across the Giant blog

Trail Description:

Moderate Hike, Some Steep Inclines

The Forest is managed for saw timber, firewood, wildlife habitat, and recreational activities such as hiking, hunting, mountain biking, bird-watching, snowmobiling, and cross-country skiing.

Total trails distance is approx. 5.83 miles

Directions and Parking:

There is parking at the north entrance off of Route 42 in Cheshire. Access the south entrance from the intersection of Gaylord Mountain Road and Downes Road in Hamden, follow Downes Road north for 0.5 miles to the cul-de-sac at the end of the road. Park at the cul-de-sac and walk on the road through the YMCA Camp Mt. Laurel.

Permitted/Prohibited Activities:

Recreational activities such as hiking, hunting, mountain biking, bird-watching, snowmobiling, and cross-country skiing. Pets are allowed on leash, please pick up all pet waste.



Photo by Gary Jordan

Total Trails Length: Approx. 5.83 miles

Blue (Quinnipiac Trail): 0.87 miles. Moderate Hike

Blue/Red (Quinnipiac Connector Trail): 1.3 miles.
Moderate Hike

Yellow (Brooksvale Road): 0.84 miles. Moderate Hike

White (Brooksvale Trail): 1.23 miles. Moderate Hike

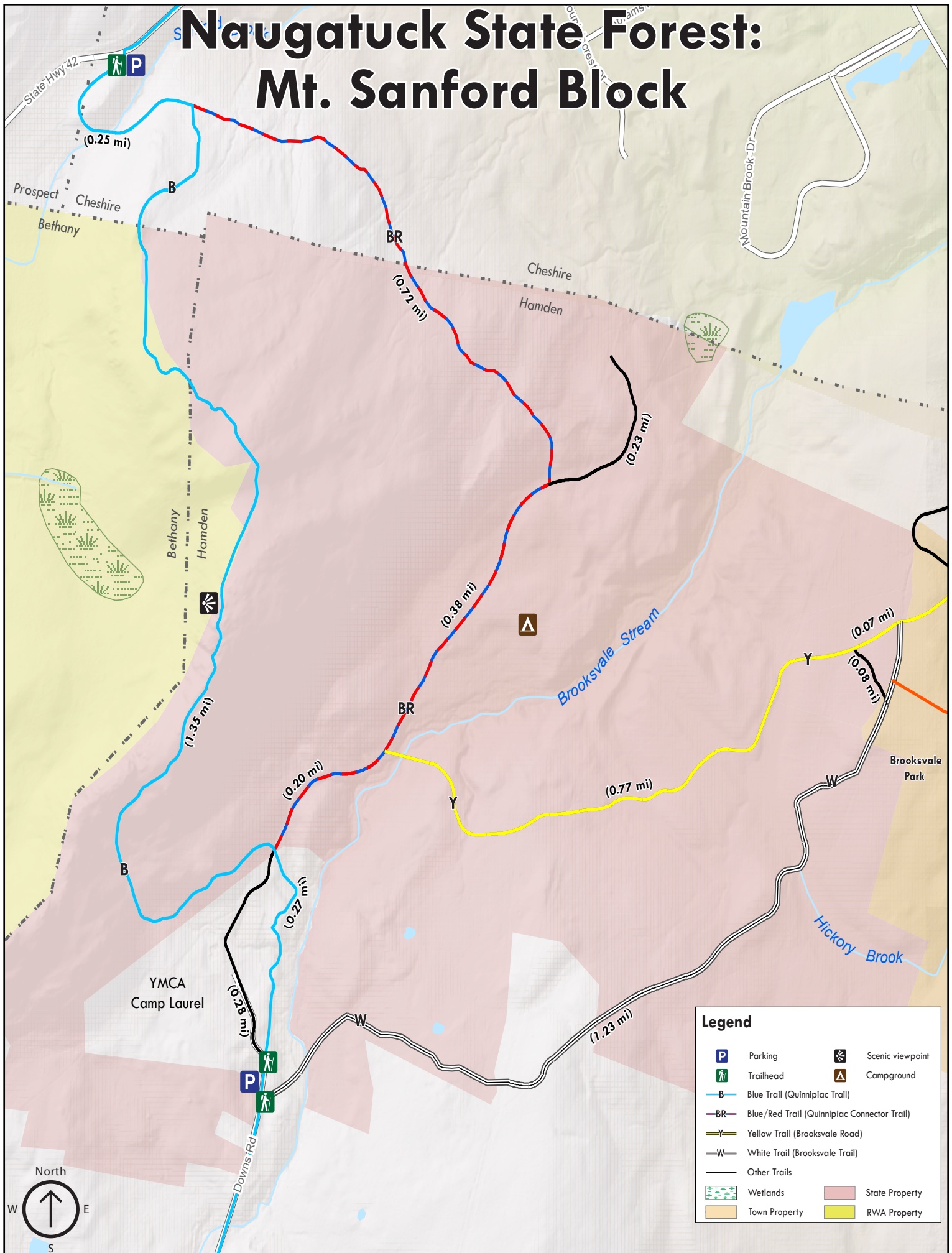
Other Trails: 0.59 miles. Moderate Hike



For more information about this location, contact:

DEEP State Parks Division
(860) 424-3200

Naugatuck State Forest: Mt. Sanford Block



Legend

- | | |
|---------------------------------------------|------------------|
| Parking | Scenic viewpoint |
| Trailhead | Campground |
| Blue Trail (Quinnipiac Trail) | |
| Blue/Red Trail (Quinnipiac Connector Trail) | |
| Yellow Trail (Brooksville Road) | |
| White Trail (Brooksville Trail) | |
| Other Trails | |
| Wetlands | State Property |
| Town Property | RWA Property |