

Summer Hill Trail

What to look for on the Summer Hill Trail

Welcome to the Madison Land Conservation Trust's Summer Hill Preserve. Purchased in 2011, these 77 acres are an important large tract of woodland. The Preserve is near the Hammonasset River and large pieces of protected watershed in North Madison and Killingworth. Woodlands like these are important wildlife habitat, providing enough room to support mammals such as fox, rabbits, coyote, fisher, beaver, deer, and even bear.

The Preserve is also home to numerous woodland bird species such as Baltimore Orioles, Scarlet Tanagers, Red-shouldered and Broad-winged Hawks, Barred Owls, Red-eyed Vireos, Pileated, Downy, Hairy, Red-bellied Woodpeckers, Yellow-billed Cuckoos, Yellow Warblers, Common Yellow-throats, Red-starts, Red Winged Blackbirds and more.

These woods also provide special cover for wintering bird species. Because the Preserve is just 7 miles from Long Island Sound it enjoys milder winter temperatures than forests in northern Connecticut and New England. Blue Jays, Blue Birds and other species flock together to spend the winter in this forest.



Photo by the Madison Land Conservation Trust

Permitted Activities:

The trails areas in the MLCT properties are for hiking only. Dogs are allowed, but must be leashed. Please pick up all animal waste. Contact the State Forest HQ for other activities allowed on their sites.



Photo by the Madison Land Conservation Trust

Please respect private property boundaries. Hiking on adjacent water company property requires a permit.

GPS Directions: 510 Summer Hill Rd, Madison, CT 06443

Category: Easy woodland trail

Start: Trailhead at the parking area on Summer Hill Road

Distance: Distance is about 1 mile depending on choice of trails

Approximate Time: 1 hour

Parking: Parking available in a dirt lot on Summer Hill Road

For more information about this walk contact:

Madison Land Conservation Trust
www.madisonlandtrust.org

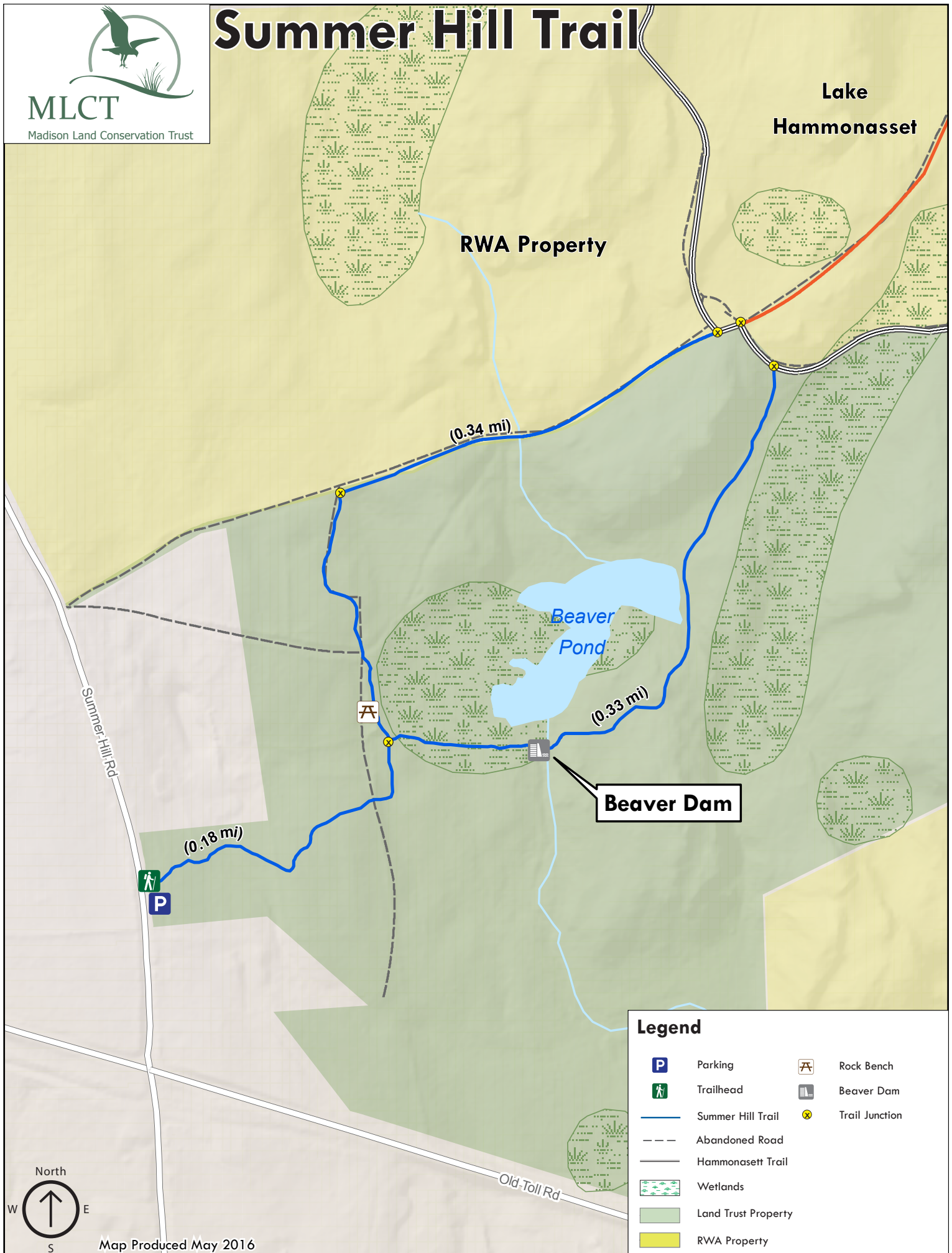




MLCT

Madison Land Conservation Trust

Summer Hill Trail



Legend

- | | |
|---------------------|----------------|
| Parking | Rock Bench |
| Trailhead | Beaver Dam |
| Summer Hill Trail | Trail Junction |
| Abandoned Road | |
| Hammonasset Trail | |
| Wetlands | |
| Land Trust Property | |
| RWA Property | |

Map Produced May 2016