

The pastoral site represents Orange's farming heritage. Part of a farm owned by the same family since 1820, these 43 acres include old deep woods, meadows, ponds, wetlands, and fields that attract migrating birds.



Photo by Town of Orange

The trail around Ewen Farm Preserve is a scenic walk around the former hay fields. There are places that the trail crosses wet areas so be sure to wear shoes that can get muddy. There is another section of trail that goes into the woods as well. However, this spur ends at the end of the property and hikers should return the way they came.



Photo by Orange Conservation Commission

Directions and Parking:

From the Wilbur Cross Parkway (Route 15): take exit 58 onto Route 34. Head east on route 34 until it intersects with Racebrook Road (Route 114). Turn right onto route 114 past the Racebrook Country Club and continue until turning right onto Shepherd Lane. St John's Drive will be on the left in about .1 miles, turn onto the Drive. Parking will be on the side of the road at the end of St. John's Dr.

Permitted/Prohibited Activities:

Permitted activities include hiking and pets are allowed on leash. Please pick up all animal waste.



Hiking



Pets on
Leash

For more information about this walk contact:

Orange Conservation Commission

(203) 891-4768

<http://www.orangectconservationcommission.com/>

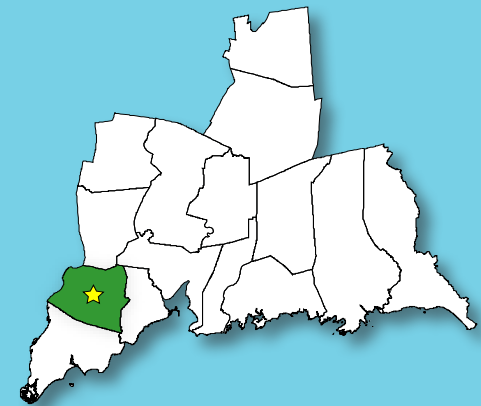
Questions regarding this brochure can be addressed to
South Central Regional Council of Governments
Phone: (203) 234-7555/Fax: (203) 234-9850
E-mail: trails@scrcog.org

Scan QR Code to access the South Central Regional Council of
Governments Recreational Trails Webpage



Recreational Trails South Central Connecticut

Ewen Farm Preserve



Orange, CT

Ewen Farm Preserve



Photo by Orange Conservation Commission

Trail Description:

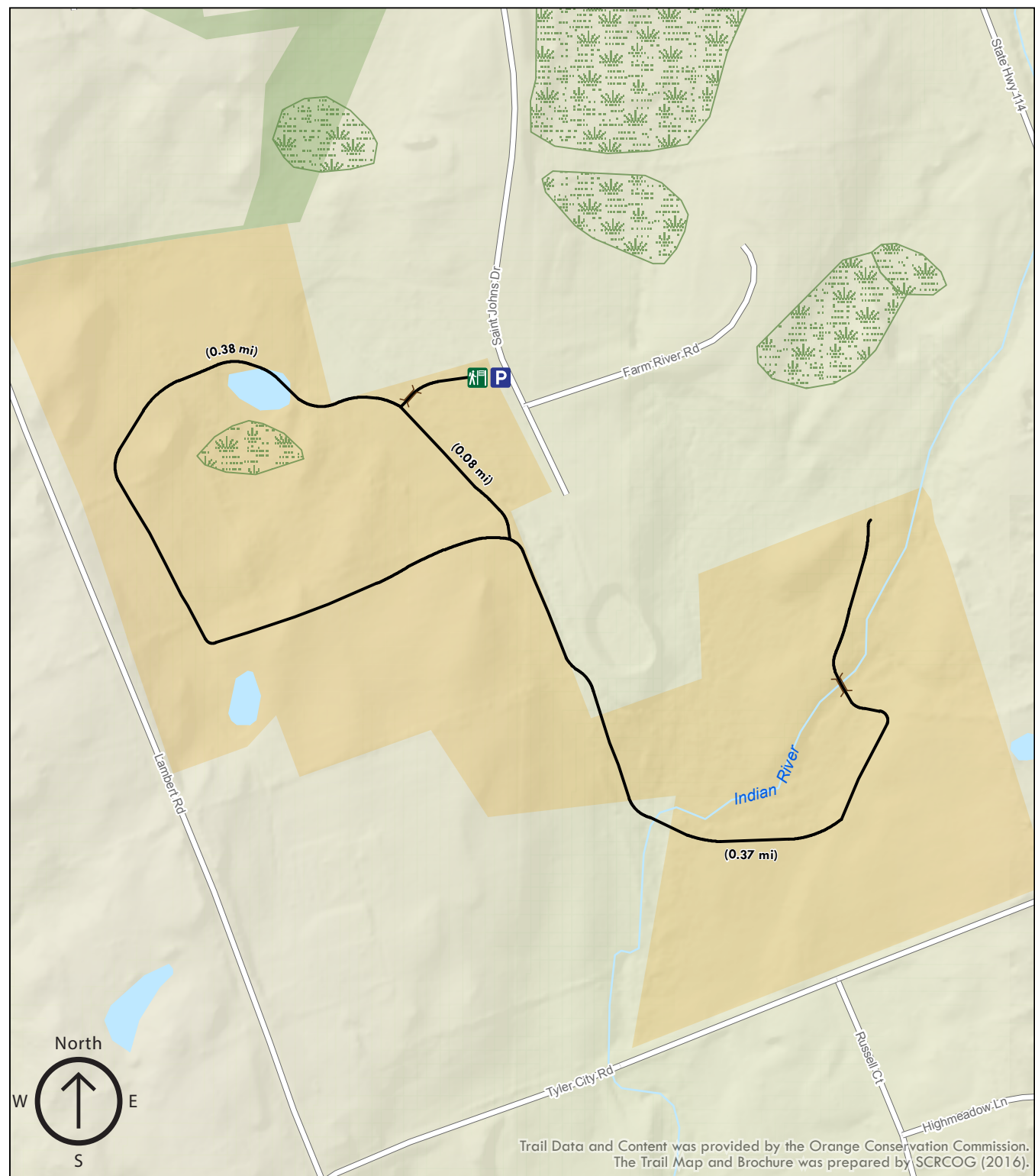
Easy Walk

The trail at Ewen Preserve loops around a meadow and a small pond. It is an easy walk. The meadow is apt to get wet so shoes that can get wet are recommended.

Total trail distance is approx. 0.87 miles

Legend

-  Parking
-  Trailhead/Sign
-  Ewen Preserve Trail
-  Bridge
-  Wetlands
-  Land Trust Property
-  Town Property



Trail Data and Content was provided by the Orange Conservation Commission.
The Trail Map and Brochure was prepared by SCRCOG (2016).